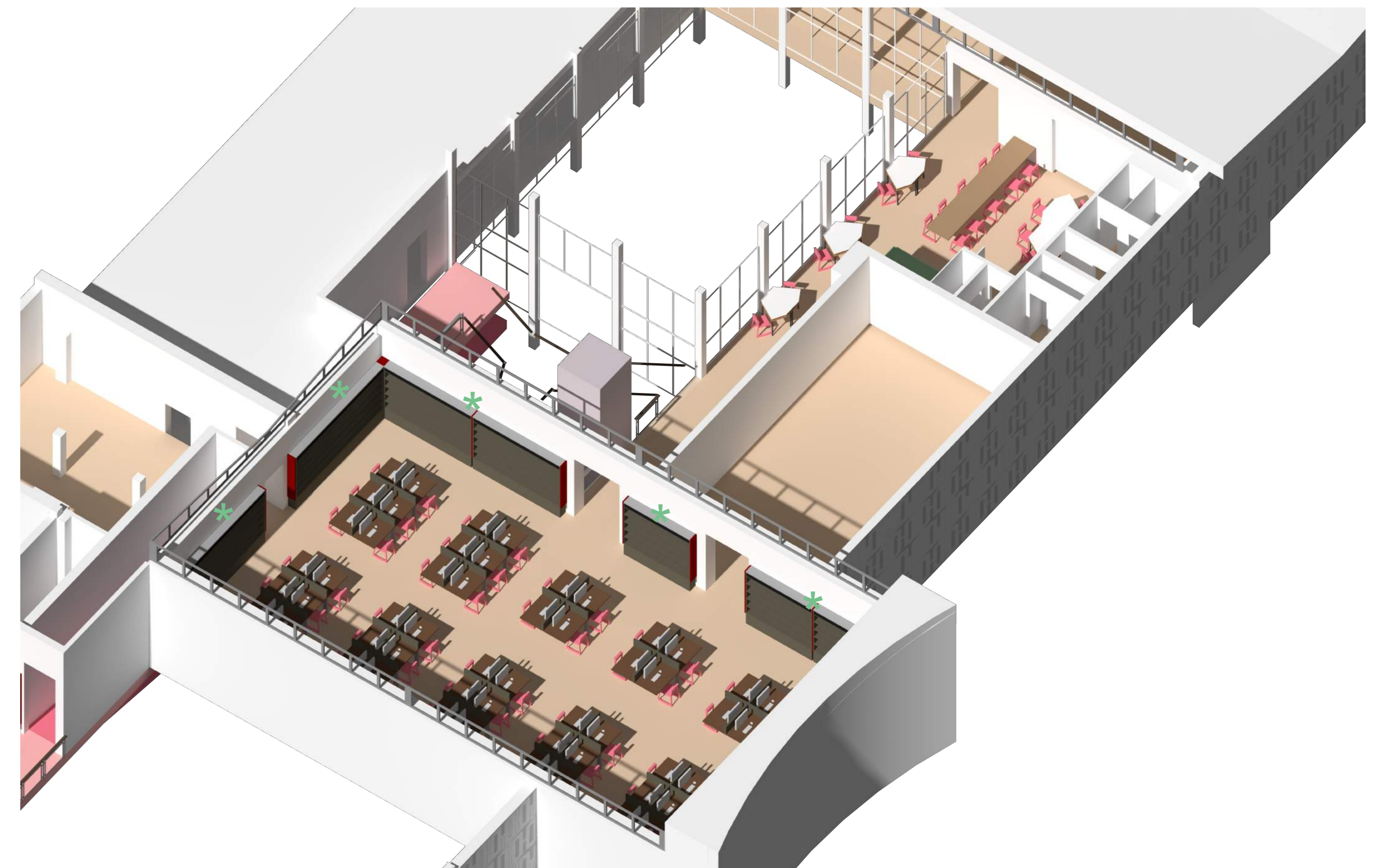


Quiet Study & Cafe Gallery



Note: All colours are representational only. Colour palette currently under discussion, in reference to LB Haringey Brand Guidelines

- | | | |
|---|--|---|
| Bookcase | Refurbished Book Stack | Original study room tables refurbished and upcycled to Cafe Gallery |
| Soft seating | Relocated Refurbished Book Stack | New study desks with power and data |
| Soft seating | New Book Stack | Relocated study room counter |
| Stairs | Mobile Bookstacks - Use to Modify Spaces | Original bar counter with counter-top vending |
| Walls and Display units | | Public WCs refurbished |
| Windows | | |
| Desks | | |
| Library services | | |
| Access Controlled Door to new Mezzanine route :Public lift access to First Floor only | | |
| Touchdown Point | | |
| Display / Notices | | |
- Height and Number of Shelves to Stack
 3=920mm
 4=1220mm
 5=1520mm
 6=1820mm