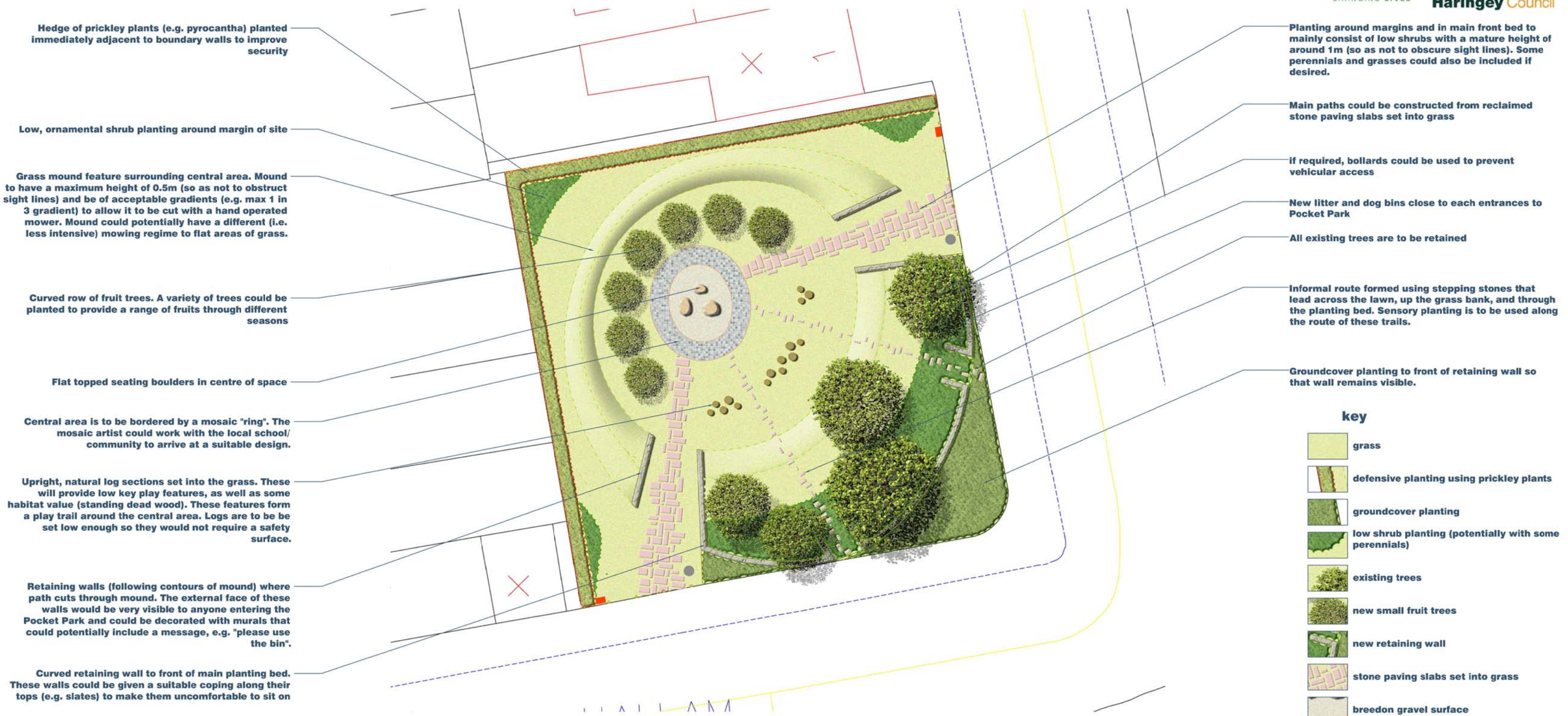


Stanley Road Pocket Park

scale 1:100



key

-  grass
-  defensive planting using prickly plants
-  groundcover planting
-  low shrub planting (potentially with some perennials)
-  existing trees
-  new small fruit trees
-  new retaining wall
-  stone paving slabs set into grass
-  breedon gravel surface
-  mosaic
-  upright logs set into ground
-  bollards
-  litter bin
-  dog bin

Planting			
Planting generally			
Plants have been selected to give a low maintenance, year round display of foliage and flowers. The bulk of the planting will be formed by low, evergreen shrubs that will give year round interest and structure whilst providing clear sightlines through the space.			
Groundcover planting	Low shrub planting (with a few perennials)	Sensory planting	Fruit tree planting
Low growing planting to form an evergreen carpet of vegetation immediately adjacent to pavement to the front of the proposed wall. Robust plants have been selected for their flowers, foliage or both (flowers and foliage)	The bulk of this planting will be formed by low evergreen shrubs that will give year round structure in a mix of foliage colours (green, silver/grey and red). Most of the shrubs will also produce flowers (purple and white), giving a long lasting display between the late spring and autumn. Intermittent planting of deciduous perennials will provide additional seasonal interest and change.	These plants have been selected for their sensory qualities (scent and touch). Many also produce flowers (a mix of purples, whites and yellows) are attractive to bees and butterflies and have wildlife benefits	A range of fruits have been selected to give fruits for a variety of uses (dessert and culinary) over a long season. Rootstocks proposed will produce medium sized trees.
<i>Vinca major</i> <i>Vinca difformis</i> Alba <i>Hedera helix</i> green ripple <i>Heuchera micrantha</i> palace purple <i>Liriodendron muscari</i>	<i>Levandula angustifolia</i> hidcote <i>Buxus microphylla</i> Green Pillow <i>Buxus sempervirens</i> suffruticosa <i>Hebe topaira</i> <i>Hebe raikensis</i> <i>Hebe "red edge"</i> <i>Hebe "ilic hint"</i> <i>Convolvulus cneorum</i> <i>Ruta graveolens</i> jackmans blue <i>Ceanothus thyrsiflorus</i> var. <i>repens</i> <i>Cynara cardunculus</i> <i>Stipa gigantea</i> <i>Calamagrostis x acutiflora</i> karl foerster 5L	<i>Phlomis fruticosa</i> <i>Achillea moonshine</i> <i>Artemisia pontica</i> <i>Artemisia poviis</i> <i>Santolina pinnata</i> neapolitana "sulphurea" <i>Erchinacea purpurea</i> magnus <i>Chamaemelum nobile</i> <i>Verbascum olympicum</i> <i>Centaurea macrocephala</i> <i>Centaurea montana</i> <i>Verbena bonariensis</i> <i>Eryngium x tripartitum</i> <i>stachys byzantina</i>	<i>Apple "Blenheim Orange"</i> (M106 rootstock) <i>Apple "Cox self fertile"</i> (M106 rootstock) <i>Apple "Bramley seedling"</i> (M106 rootstock) <i>Cherry "Stella"</i> (cot rootstock) <i>Plum "opal"</i> (St Julien A rootstock) <i>Plum "victoria"</i> (st Julien A rootstock) <i>Apricot "Aitred"</i> (st Julien A rootstock)
Defensive planting			
Dense prickly shrub planting to form a defensive planting along garden boundaries. All shrubs also produce white flowers and berries (good for wildlife)			
<i>Pyrocantha x watereri</i> <i>Crataegus monogyna</i> <i>Pyrocantha glolden dome</i>			