

14 November 2022

## School Street Consultation St Thomas More Catholic School (SS44)

Dear Resident or Business,

I am writing to you to provide information about a School Street that is proposed in this area and to invite you to share your views as part of this consultation.

### What is a School Street?

School Streets transform roads to create a better environment for children to walk, cycle and wheel to school.

### How do School Streets help?

When a School Street is in operation, the road temporarily becomes a Pedestrian and Cycle Zone, at school drop-off and pick-up times.

By temporarily closing the road to motor vehicles at the start and end of the school day, School Streets help by:

- Reducing traffic outside the school, which reduces emissions and makes the air around the school cleaner at peak times for children
- Making it safer to walk, cycle, scoot, and wheel to school. Children will benefit from increased physical activity on their journey to and from school
- Reducing traffic congestion and parking problems outside the school and reducing road danger

Residents and businesses can apply for exemptions (details overleaf), giving them the ability to drive into the School Street if needed. Emergency service vehicles have access at all times.

### What is being proposed?

The proposal is shown on the enclosed plan and is summarised as follows:

- Glendale Road (south of Woodside Road) proposed to become a School Street that would operate:
  - Term time only
  - Monday to Friday
  - 8.30am – 9.15am and 2.15pm – 3.45pm
- Motor vehicles (cars, vans, motorcycles etc.) will not be allowed to enter the School Street during the above times unless they had been issued an exemption (see details below)
- Crofts Lane would not be designated as a School Street as it not public highway, though properties would be entitled to apply for an exemption
- To inform drivers, we will install traffic signs and send updates to sat-nav companies
- Motor vehicles that enter the School Street without an exemption, during operational hours, will be identified by camera and may be issued a Penalty Charge Notice (PCN)
- No one needs an exemption to drive out of a School Street. You only need an exemption to drive into the School Street during operational hours
- School Streets remain open to people walking, cycling and wheeling
- Emergency services will always have unhindered access

## Who is eligible for a School Street exemption?

If the scheme goes ahead, the following groups would be eligible to apply for an exemption:

- Residents or businesses who have an address within the School Street (see note below) to a maximum of two per property
- Blue Badge holders who require access to the School Street
- Pupils with a disability that prevents them walking or cycling to school
- Medical practitioners visiting someone with an address in the School Street
- School vehicles transporting disabled children

*Note:* properties within the boundary of the School Street would be eligible for a resident or business School Street exemption. Those properties are outlined in blue on the enclosed plan.

Motor vehicles without an exemption, including visitors, tradespeople or delivery drivers are not permitted to drive into the School Street during operational times. But no exemption is required to drive out of a School Street, eg. those vehicles that were already parked when it came into operation.

## Why is the Council considering a School Street?

These proposals are part of Haringey's plan to improve air quality, children's health, tackle the climate emergency and to make it safer and easier for children to walk and cycle. The council has been working with schools across the borough and has delivered 23 School Streets to date.

## How can I have my say?

We welcome your views on the enclosed proposals. Please respond to the consultation before Monday 12 December 2022.

The easiest way to give feedback is by [completing a short online questionnaire](#) or by scanning this QR code.



If you need assistance responding, you can email [schoolstreets@haringey.gov.uk](mailto:schoolstreets@haringey.gov.uk) or call 020 8489 4787.

## What happens next?

Once the consultation has closed, we will review all feedback received and take a decision on how to proceed. This decision is expected in January 2023. If the School Street is approved, we expect to implement the School Street in the spring, subject to statutory (traffic order) consultation.

Before any School Street launches, we will write to all eligible properties explaining how to apply for an exemption.

## More information

For more information on our School Street programme, please visit [www.haringey.gov.uk/school-streets](http://www.haringey.gov.uk/school-streets)

Yours faithfully,

Haringey School Streets Team

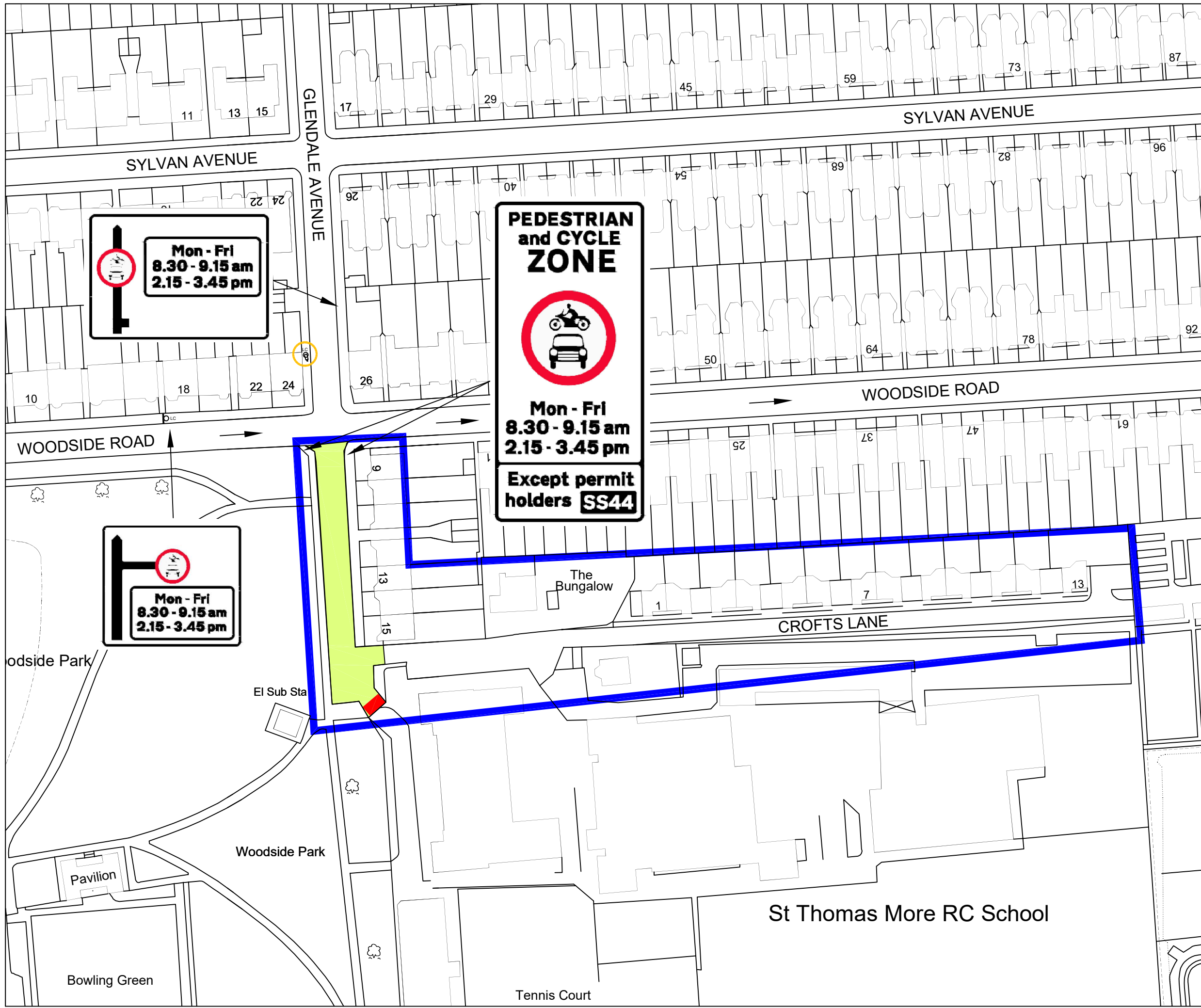
### Alternative formats and translations

If you would like the document translated or in an alternative format (including audio) please contact us with your name, address and title of the document you need assistance with:

Email: [consultationtranslation@haringey.gov.uk](mailto:consultationtranslation@haringey.gov.uk)

Write to: Freepost Plus RTKX-AJJC-ULRY London Borough of Haringey N22 8HQ

This product includes mapping data licensed from Ordnance Survey with the permission of HMSO © Crown Copyright LBH 2022. All rights reserved. License number 100019199.



- KEY:**
- School Street
  - Existing properties eligible for a School Street exemption permit
  - School Gate Entrance
  - LC Proposed ANPR camera on existing lamp column

Rev	Description	Checked	Date
Project: SCHOOL STREET			
Title: SS44 ST THOMAS MORE SECONDARY SCHOOL			
Path:			
Designed: FC	Drawn: FC	Checked: SS	
Scale: N.T.S.	Date Drawing Created: 07/22		
Org. No:	Rev: -		

**St Thomas More RC School**

**ENVIRONMENT & NEIGHBOURHOODS**  
 Direct services  
 Highways & Parking  
5th Floor, Alexandra House, 10 Station Road, Wood Green, London N22 7TR  
 Tel: 020 8489 0000 Fax: 020 8489 1251  
 Director of Environment & Neighbourhoods: Eubert Malcolm

