

# HOUSING ACT 1985 SECTION 105 CONSULTATION

Consultation on proposed changes to the  
provision of amenities for secure tenants of  
Woodridings Court

**2 August 2021 - 5 September 2021**

# Our commitment to delivering new homes

Housing is a top priority for Haringey Council. There are around 3,000 families living in temporary accommodation, and over 10,000 people on the waiting list for council housing. We are committed to delivering a new generation of council homes for local people. Our preference is to build as many of these new council homes ourselves, on our own land, wherever possible. You can find out more about the council's Housing Delivery Programme, including funding and current sites, by visiting [www.haringey.gov.uk/haringey-homes](http://www.haringey.gov.uk/haringey-homes).

## Woodridings Court

In July 2019, the council agreed to look at a number of sites to consider their suitability for building new council homes. The derelict car park at Woodridings Court was identified as one of those sites.

## Under this proposal

Please see diagrams overleaf which show the existing site at Woodridings Court and the changes we are proposing including:

- Removal of the derelict car park
- Using the land to provide up to 34 new council homes for Council rent

## Your views

The council wants to hear your views. No decision about the future of the derelict car park at Woodridings Court has been made yet.

Under Section 105 of the Housing Act 1985, the council has a legal obligation to consult with its secure tenants on the removal of the parking bays. Though not required, we will also be asking leaseholders for their views regarding this proposal. The council will consider any comments made about the proposal before a final decision is made.

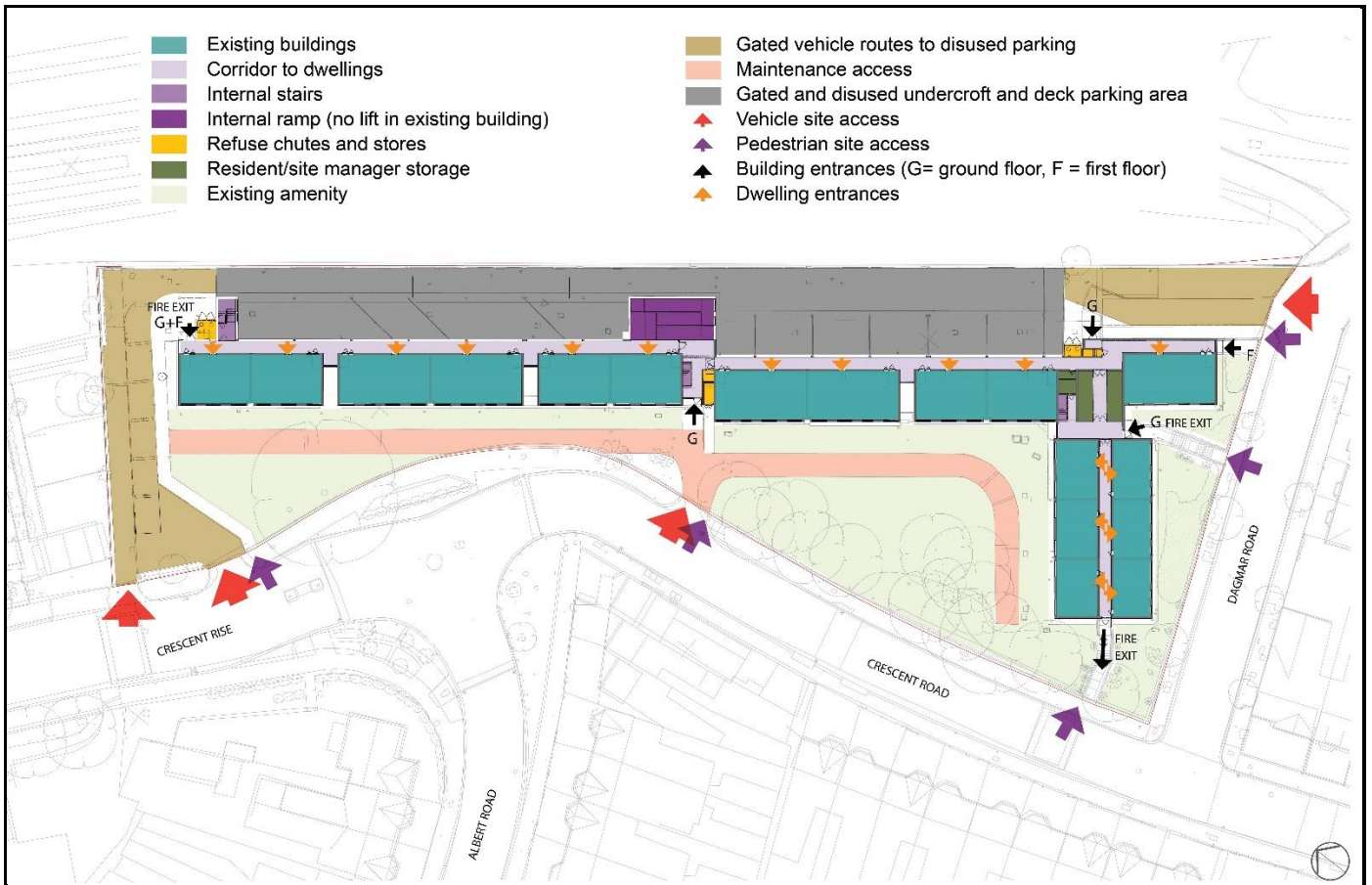
## You can have your say by

- Completing the questionnaire and returning it in the Freepost envelope enclosed
- Attending one of our online engagement events and sharing your views  
Monday 9 August 2021 | 6pm  
Thursday 26 August 2021 | 1pm  
Find more information on how to join at [haringey.gov.uk/haringey-homes](http://haringey.gov.uk/haringey-homes)
- Completing the questionnaire online at [www.haringey.gov.uk/haringey-homes](http://www.haringey.gov.uk/haringey-homes)
- Emailing your comments to [S105@haringey.gov.uk](mailto:S105@haringey.gov.uk)

If you would like a pack sent in the post, require further information or if you need to access the materials in a different format, please contact the team using the following details: [S105@haringey.gov.uk](mailto:S105@haringey.gov.uk) | **020 8489 2914**.

The consultation starts on 2 August 2021 and all feedback must be received by **Sunday 5 September 2021**. **This pack provides further details about the proposal.**

## Existing site plan

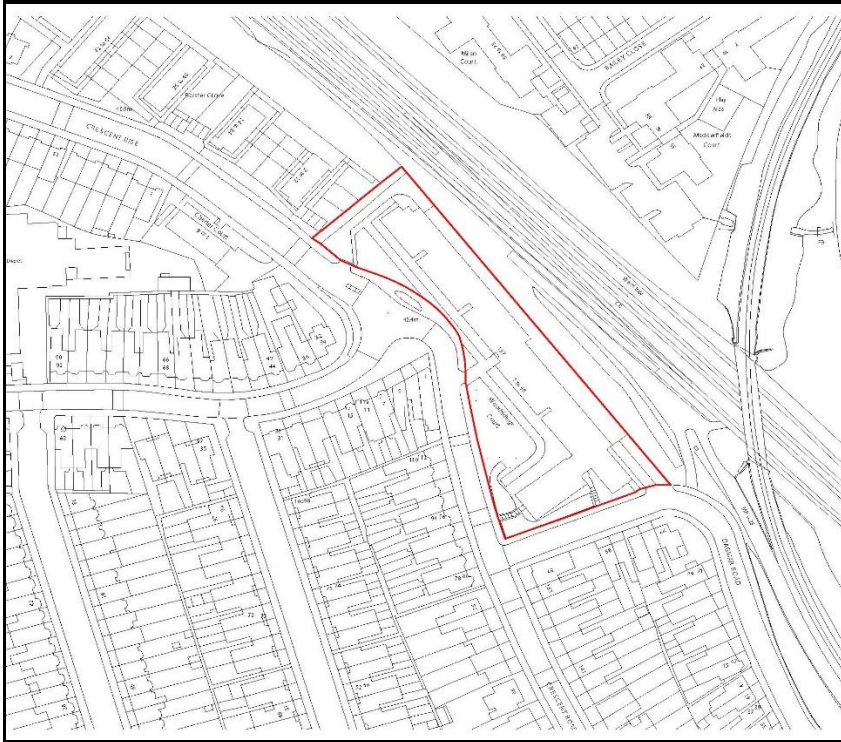


## Proposed site plan (indicative)

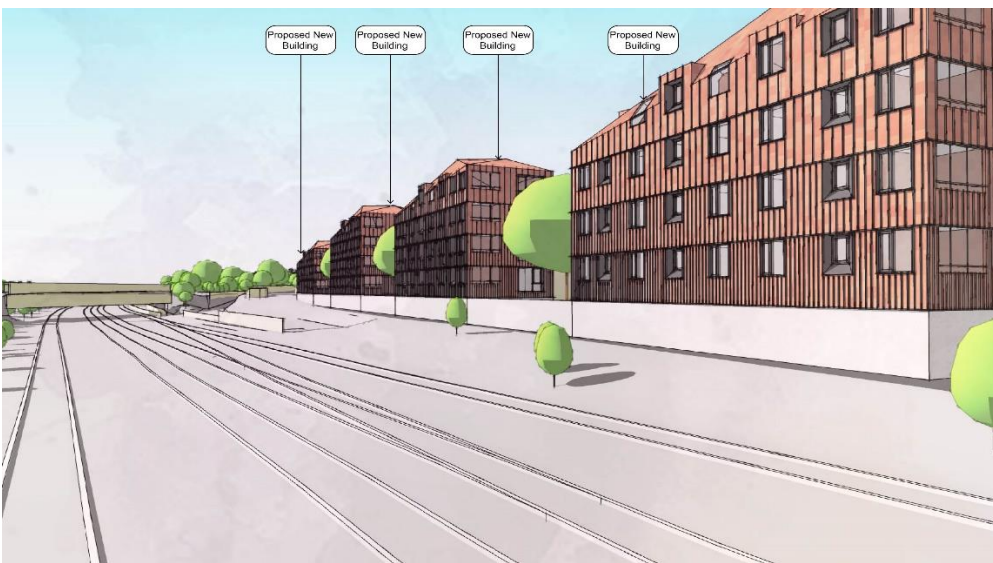




Existing location plan



Proposed elevation view from the railway looking south (indicative)



Proposed elevation view from Crescent rise looking south (indicative)

