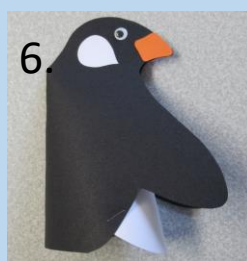
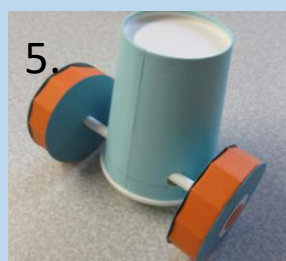
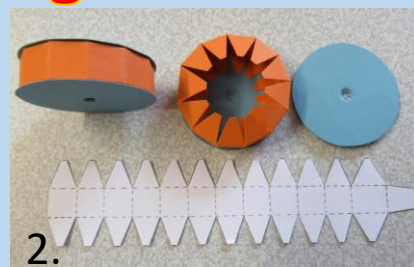
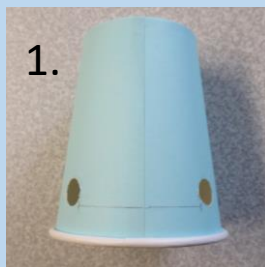


You will need:

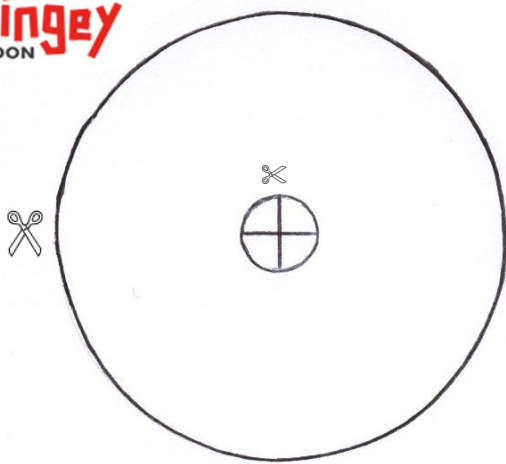
- ❖ The Penguin model templates.
- ❖ A4 craft card.
- ❖ 1 Paper cup (approx. 7.3cm*8cm)
- ❖ 1 Paper straw: length 16cms.
- ❖ Scissors.
- ❖ Stapler.
- ❖ Glue stick and all purpose glue.
- ❖ Ruler.
- ❖ Pencil.
- ❖ Adhesive tape.



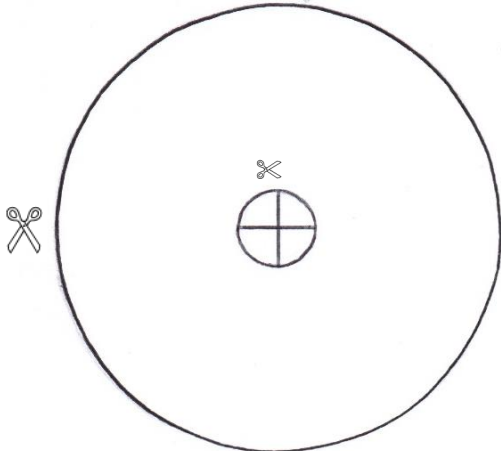
How to build the Penguin model:

1. Cut along the solid outline of the templates provided. Do not cut along the dashed lines. Draw the outline of the shapes on to colour craft card. Or glue the templates on to craft card, cut around the shapes and decorate. Cut out the webbed feet, this must remain in paper format.
2. Measure 1cm from the top of the paper cup. Cut out two holes 5cms apart. See photograph 1.
3. **The wheel tread templates:** Fold along the dashed lines. Curve the tread into a circle and glue the flap on to the other end. Glue around one wheel (with a hole in the middle) and stick the tread teeth onto the wheel. When dry, glue a second wheel and stick it on the tread teeth to create a solid wheel. Do the same with the second set. See photograph 2.
4. Insert the straw through one wheel. Snip the tip of the straw, 1.5cms deep, four times and bend them out. See photograph 3.
5. Align the blue wheel cover on top and glue together with the opened out straw tip in between. See photograph 4.
6. Insert the straw through the holes on the paper cup. See photograph 5.
7. Insert the second wheel through the other side of the straw. Snip the tip of the straw again, 1.5cms deep, four times and bend them out. Align the blue wheel cover on to the wheel and glue together with the opened out straw tip in between. This process creates a cup with two wheels. See photograph 5.
8. **The Penguin templates:** Fold the penguin's body in half along the dashed lines. Curve the circle shape (abdomen) into a U-shape. Curved into the palm of your hand, insert the U-shape circle in between the wings of the penguin and staple along the staple marks on the penguin. Use adhesive tape to cover the back of the staples. This process will create a 3D shaped Penguin model. See photograph 6.
9. Place the penguin model over the paper cup and gently push down. When adjusted you can staple the penguin on the paper cup from the front. Use adhesive tape to cover the back of the staple inside the cup.
10. **The handle templates:** Using sturdy card, overlap and align the handle and glue together, except for the parts to be folded out. Open out the flaps into a Butterfly shape and glue on to the back of the craft. Hold it in place until it dries. See photograph 7.
11. Place the paper webbed feet onto the wheels. The feet facing forward, glue one foot under the tread of one wheel and glue the second foot on top of the tread on the second wheel.

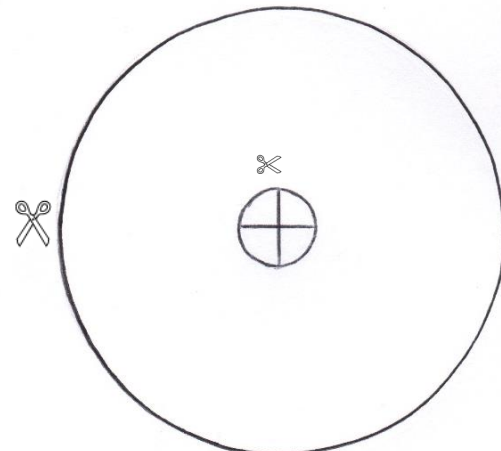
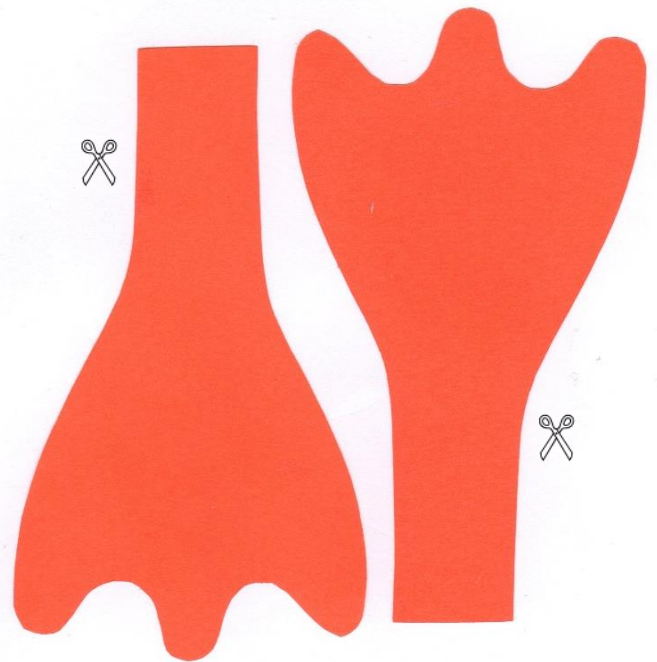
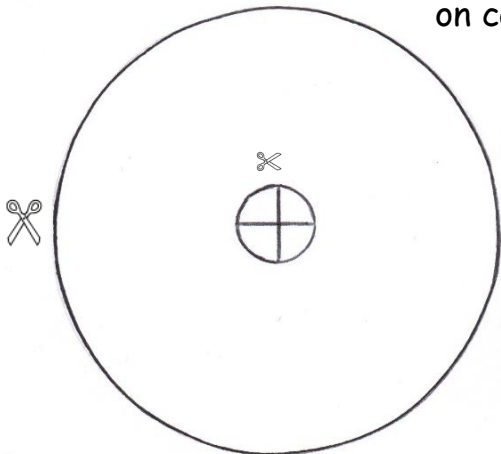
Caution: Adult supervision will be required when using scissors, stapler, glue and tape. Small parts can be a choking hazard. Do not leave children unattended during project.



Wheel template: cut along the outline of the shapes ✂

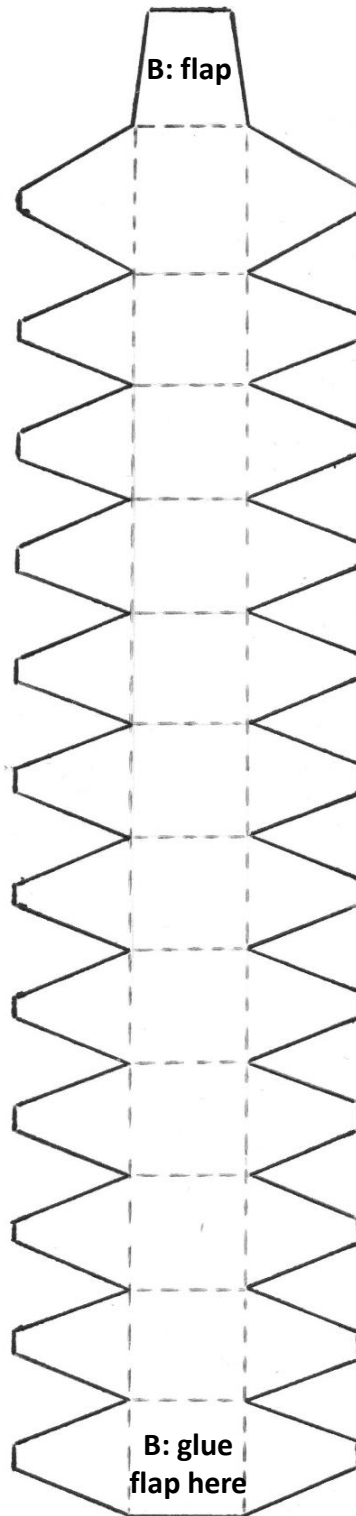
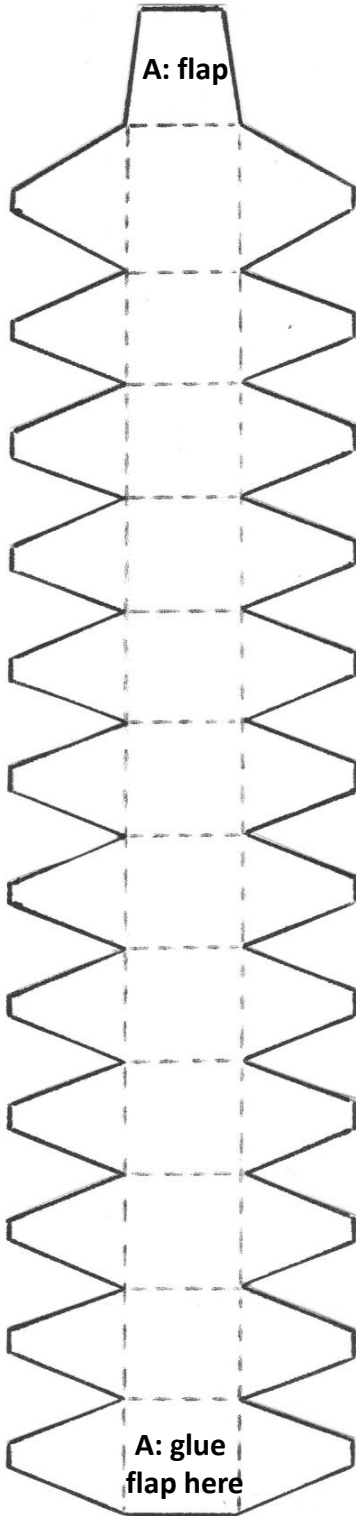


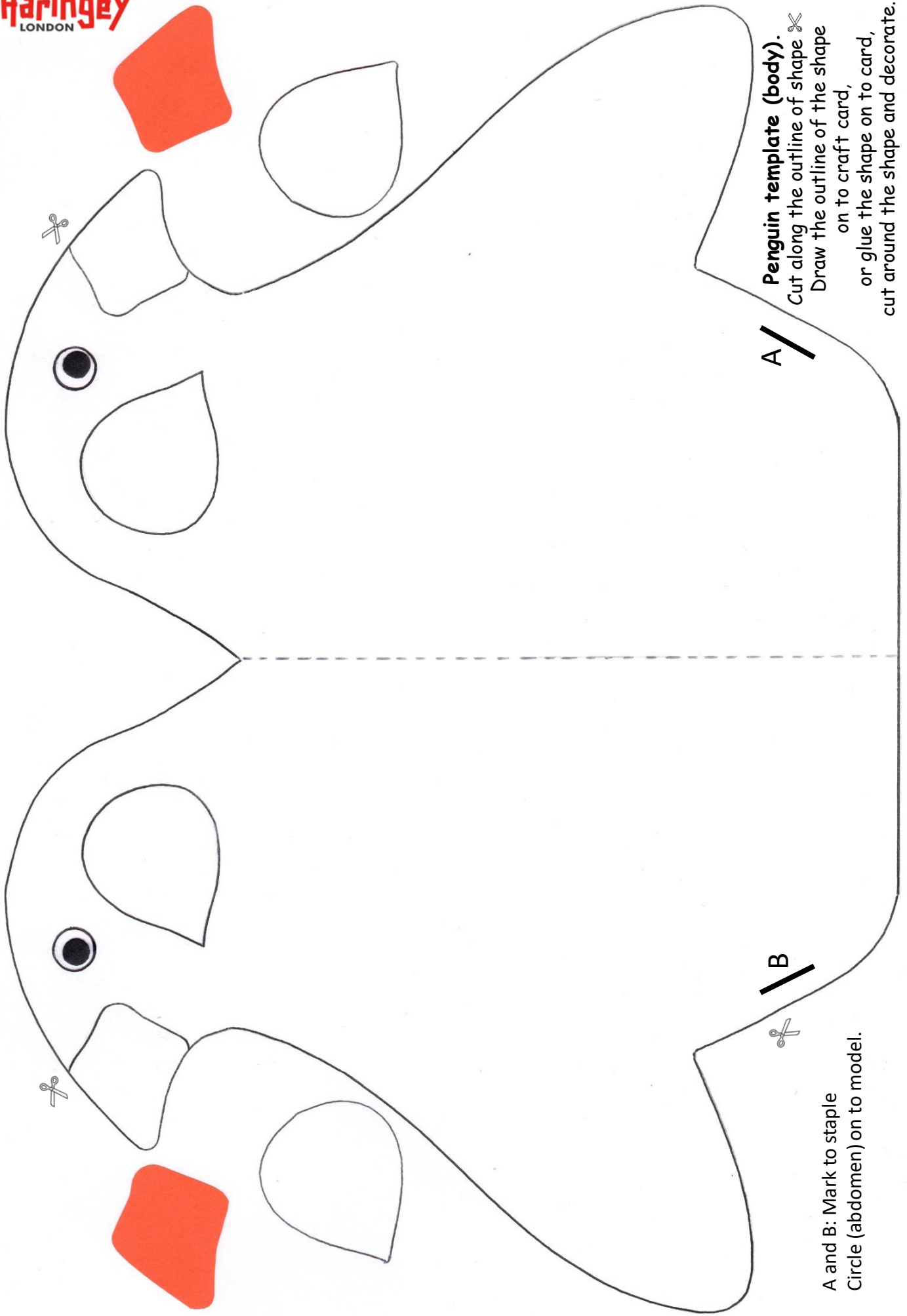
Glue the white wheels on to craft card or draw the outline on card and cut out.



Small circles in center of white wheels:
Carefully pierce the four holes with a pencil
And/or cut out the small circles with scissors.

Wheel tread template: cut along the outline of the shapes ✂
Fold along the dashed lines. Curve the tread into a circle and glue the flap
on to the other end.





Penguin template (body).
Cut along the outline of shape ✂
Draw the outline of the shape
on to craft card,
or glue the shape on to card,
cut around the shape and decorate.

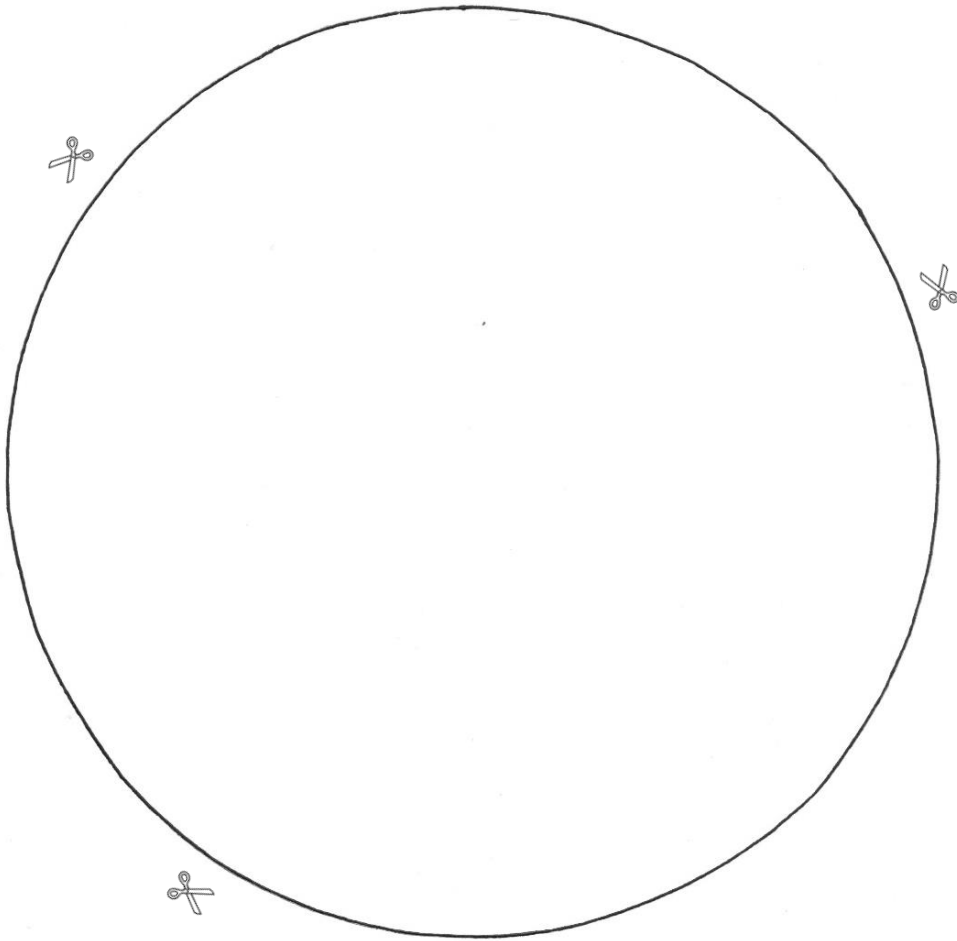
A /

B /

A and B: Mark to staple
Circle (abdomen) on to model.

Penguin template (abdomen).

Cut along the outline of shape ✂
Draw the outline of the shape on to craft card,
or glue the shape on to card,
cut around the shape and decorate.



Fold flap out.
Glue on to
back of
cup/model.

Handle template.
Cut along the outline of shape ✂
Draw the outline of the shape
on to craft card,
or glue the shape on to card,
cut around the shape and decorate.

Overlap and align the handle. Glue
together to create a sturdy handle.
Open the flaps into a Butterfly shape
and glue on to the back of the craft.

Fold flap out.
Glue on to
back of
cup/model.