

# Priority 3

## Objective 1:

To strengthen partnerships and together work with our communities to improve their environment, enable people to feel safe and proud of where they live and work, particularly through reducing anti social behavioural and environmental crime.

## Outcome Indicator:

Public attitude survey\*: to what extent are you worried about crime in the area?

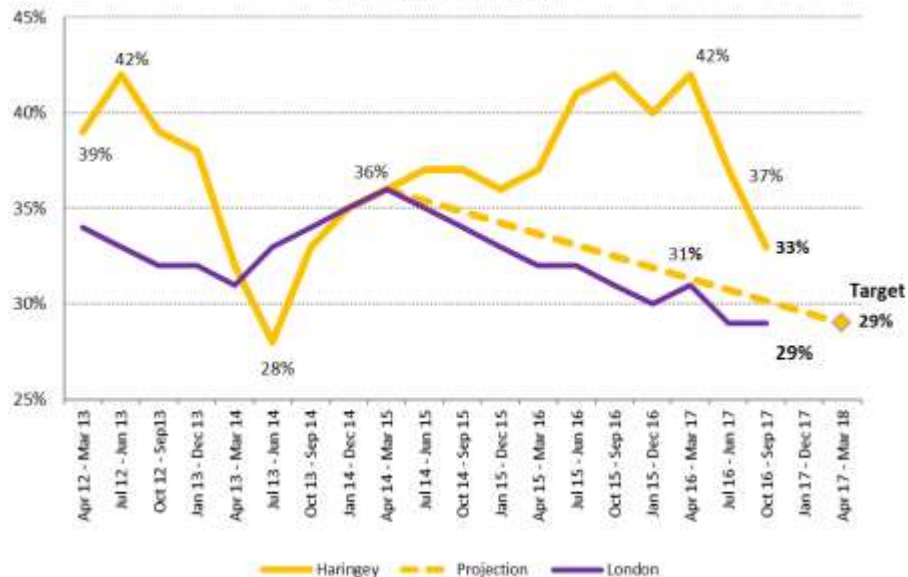
## Target:

Haringey East, North and West to all be down to 29% by 2018



**To what extent are you worried about crime in this area?**

(% who said very/fairly worried)



## What does the data say?

Q2 Oct16-Sep17: Q2 saw a 4% reduction to 33% in worry about crime continuing the falling trend from Q1 which fell by 5% over Q4 2016/17. Haringey is now only 4% points above our 29% corporate target. London's falling trend appears to have bottomed out, holding at 29% in Q2. Compared to the same period in 2016 London has seen a relatively small reduction of 2% compared to a significant 9% decrease in Haringey for the same period.

## Partnership activity

- Increased communications around successful actions
- Tranche 2 of the deployment of traceable liquids in the Borough tackling Burglary with Police Partnership Tasking officers working in partnership with the Local Authority. This is augmented by continued interaction with local neighbourhood watch groups
- Distribution of 70,000 leaflets to assist confidence in the wards of highest concern twice in the last 6 months.
- Community Engagement Board fully established - activity ongoing to increase community engagement through social media platforms - Facebook and Twitter
- Increased presence in print media- active promotion of BikeSafe campaign in print and social media.
- Focussed activity around taking weapons off the street under Op Sceptre
- Engagement programme around knife crime awareness to be delivered into schools.

The Public Attitude Survey (PAS) is a London-wide rolling survey measuring attitudes towards policing, their priorities and experiences throughout the year. It is based on a random sample of households across London's 32 boroughs. Figures are based on results for the most recent 12 months of interviews. For this question there has been an average of 402 respondents per quarter since the same period last year in Haringey