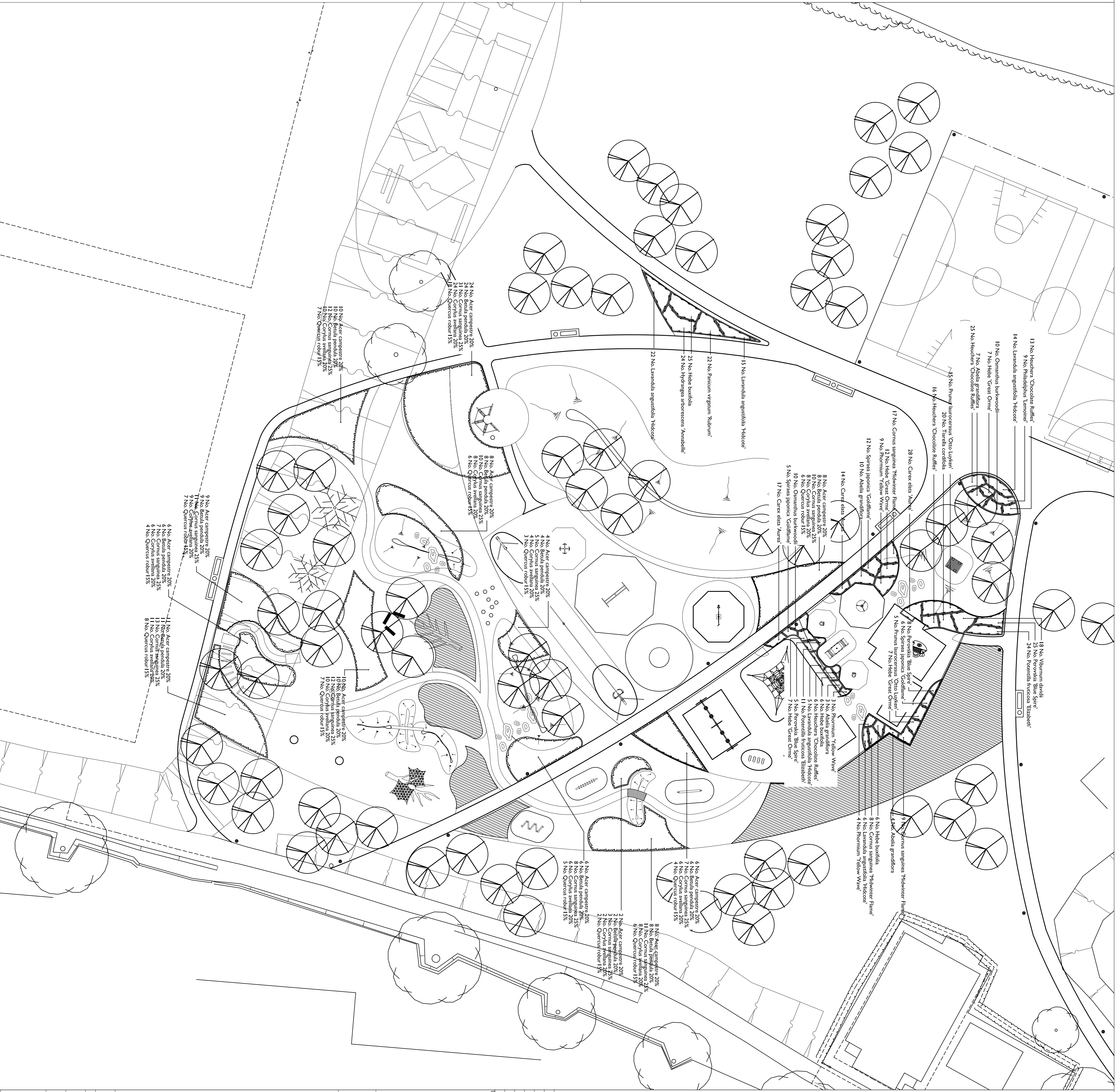
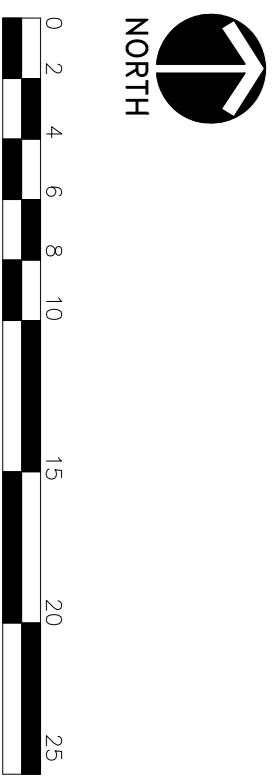


**Planting Schedule**

Trees	Species Name	Girth	Height	Specification
112 No.	Acer campestre		100-125cm	Whip -BR
112 No.	Betula pendula		100-125cm	Whip -BR
112 No.	Corylus avellana		100-125cm	Whip -BR
83 No.	Quercus robur		100-125cm	Whip -BR
Shrubs	Species Name	Pot Size	Height	Density
24 No.	Abelia grandiflora	5L		2/m <sup>2</sup>
140 No.	Cornus sanguinea		80-100cm	1/m <sup>2</sup>
34 No.	Cornus sanguinea	'Midwinter Flame'	5L	3/m <sup>2</sup>
33 No.	Hebe	'Great Orme'	5L	3/m <sup>2</sup>
37 No.	Hebe	buxifolia	5L	3/m <sup>2</sup>
24 No.	Hydrangea arborescens	'Annabelle'	5L	3/m <sup>2</sup>
62 No.	Lavandula angustifolia	'Hidcote'	5L	3/m <sup>2</sup>
20 No.	Ornithoglossum	'burkwoodii'	5.7.5L	3/m <sup>2</sup>
38 No.	Perovskia	'Blue Spire'	3L	5/m <sup>2</sup>
9 No.	Philadelphus	'Lemonel'	5-7.5L	3/m <sup>2</sup>
16 No.	Pieris	'yellow Wave'	5L	2/m <sup>2</sup>
35 No.	Preonitella	fruticosa 'Elizabeth'	3L	5/m <sup>2</sup>
20 No.	Prunus	laurocerasus 'Otto Luyken'	5L	2/m <sup>2</sup>
23 No.	Spiraea	japonica 'Goldflame'	5L	3/m <sup>2</sup>
18 No.	Viburnum	davidi	5L	3/m <sup>2</sup>
Herbaceous	Species Name	Pot Size	Height	Density
60 No.	Heuchera	'Chocolate Ruffles'	2L	5/m <sup>2</sup>
22 No.	Panicum	virgatum 'Rubrum'	2L	3/m <sup>2</sup>
20 No.	Taraxacum	cordifolia	2L	5/m <sup>2</sup>
Grasses	Species Name	Abbrev	Specification	Density
59 No.	Carex	elata 'Aurea'	2L	6/m <sup>2</sup>



**NOTES:**  
 All dimensions must be checked on site and not scaled from this drawing.  
 All cross references are to the latest edition of the relevant drawing or specification being referenced.

Areas to receive a mild mowcut mix:  
 Grass Seed House  
 RE Traditional Hay Meadow (MS GRASSLAND)  
 To be sown at 5 g/m<sup>2</sup>

Ornamental planting bed to be protected with stranded wire fence during establishment period. Q60 140

Rev	Date	Revisions	Checked

© copyright  
 wryne-williams associates ltd  
**LANDSCAPE ARCHITECTS**  
 I Fisher Lodge Office, Pump Lane, Fisherby,  
 Chalfont St Giles, Bucks HP8 4JF  
 Tel: 01494 527000  
 E mail: landscape@wryne-williams.co.uk

Client  
**Haringey Council**  
 Job Title  
**Muswell Hill Playing Fields**

**Drawing Title**  
 Planting Plan -  
 Ornamental and Native  
 species shrubs and  
 Wildflower Areas

Scale	1:250@A1
Issue	Plan
Drawn	29/07/09
Checked	30/07/09
Drawn	AH
Checked	KLBF
Drawing Number	0841/LP/301
Rev	