

MISSION TRANSITION

Competition deadline
30 July 2023



Moving Up from year 6 to year 7
is exciting - it comes with new
freedom and responsibility too.

Year 6 Teachers.

Please help your pupils enter this competition in class and preferably
send all entries in post to us at Smarter Travel, 4th Floor Alexandra
House, Station Road, Wood Green N22 7TR

Haringey
LONDON

You could win a new bike, just by completing this competition.

We would like you to learn about public transport and places in London. Your new free Zip Oyster Card will create opportunities to investigate our capital. (Please check the current information regarding Zip Oyster cards on the TfL website <https://tfl.gov.uk/fares/free-and-discounted-travel/11-15-zip-oyster-photocard>. This competition was printed April 2023).

To enter the competition, just answer the questions - you may have to plan some journeys using websites such as TfL Journey Planner and Google Maps. When you have completed the task, you can either scan your entry form and email to: **smarter.travel@haringey.gov.uk**. We would prefer that your school sends us all of the classes' entries in one envelope to: Smarter Travel Team, 5th Floor, Alexandra House, 10 Station Road, Wood Green N22 7TR

The closing date is **30 July 2023**.

We will choose a winner from all the entries received, with these great prizes up for grabs:

First prize - a bicycle with lights and lock

Second prize - £25 voucher

Third prize – a bag of cycling/walking goodies

You can find the rules and regulations for this competition on this website: **www.haringey.gov.uk/schooljourneys**

Your name

Date of birth

(Must be born between 1 September 2011 to 31 August 2012)

Your primary school

Your Year 6 teacher's name

The secondary school

you will be attending from September 2023

WHAT TO DO?

You have a mission to solve clues to find out about interesting places in London and answer some questions related to them. Finally, you need to show us how you will get from your primary school to the secondary school you are starting in September.

You might need to check Transport for London's Journey Planner at **<https://tfl.gov.uk/plan-a-journey/>** or search internet and maps, or look up the place of interest, to complete each section.

When you have answered the questions, plus completed the details in the form, please send it through to us to check. This competition is only for Haringey students, so you have a good chance of winning.

Good luck with **MISSION TRANSITION!**

Haringey's Smarter Travel Team

smarter.travel@haringey.gov.uk



1

At this place you can find a huge clock with a loud bell that chimes every hour. The whole of the UK usually listens to it chiming when New Year arrives. The rest of the building is where decisions are made about how this country works. (Someone tried to blow it up in 1605!)

What is the name of the famous bell that is found in this clock tower?

What is the building's name?

How could you get there from your primary school – using public transport only?

.....

.....

.....

.....

How many minutes will it take for this journey?

2

Can you name the huge tent-like building that was built in Greenwich to celebrate the Millennium?
(We know you were not born then!)

.....

What is the post code for this place?

What is the name of the building now?

Why do many people enjoy going to this place now?

.....

.....

How would you get here from the place you discovered for question number 1?

.....

.....

.....

.....

How many stations would you go through on the journey between the answer to question 1 to get to this venue?



3

In London we have an attraction where you can see nearly 20,000 different live animals, birds, reptiles and insects.

What is it called?

What year did this attraction open to everyone?

How much does it cost for a child to visit?

What is the name of the canal and the park near this place?

How many miles is it from the place in question 2?

What is the closest tube station to this attraction and what tube line is it on?

If you start at **Turnpike Lane Station**, which bus route could you use to get here?

LONDON IS A FOREST!

***ALTHOUGH ONE OF THE BUSIEST CITIES IN THE
WORLD AND HOME TO OVER 8 MILLION PEOPLE,
DID YOU KNOW LONDON ALSO FALLS UNDER THE
UNITED NATIONS DEFINITION OF A FOREST?***



4

London is rich in history and is filled with interesting filming locations, along with museums, galleries, parks and buildings. All of this works together to create an inspiring and creative city that many film directors find appealing, so your next question is all about children's films made in London.

Name these three places used in the Harry Potter series of films



This famous market is in the City of London can you name it?

.....

Which parts of Harry Potter were filmed here?

.....



What do wizards going to Hogwarts have to do here?

.....

What is the name of the station?

.....



What is the name of this bridge?

.....

When was this bridge built across The Thames?

.....

What happened to it in the Harry Potter films?

.....

Where in central London are big film premieres held that are attended by the stars, for example the premier of *The Little Mermaid* and *Spider-Man: Across the Spider-Verse*?

What colour carpet do the actors normally walk on?

.....

What is the name of the station closest to this place?

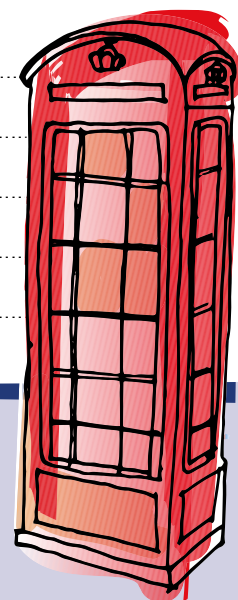
.....

What is the name of the tube line is this on?

.....

How many stops is it from Wood Green Tube Station

.....



5

In Haringey we have an iconic building that has a huge amount of history, especially relating to something 99% of us enjoy every single day! In 1980 a huge fire almost destroyed the whole building. However, this has now been repaired and the building has many activities for everyone to enjoy. It sits high on a hill and you can enjoy an amazing view across London.

What is the building called?

What important service started here, that has an impact on our everyday life?

What is the closest train (not tube) station to this building?

What number bus stops near to this building?

Name four things you can do at this venue:

1).....

2).....

3).....

4).....



6

A few questions about your travel around London

How much do you pay for your student Zip Oyster Card?

How many people can use your Zip Card?

How many cameras are on a London bus?

How many tube lines are there in London?

7

These are Haringey's Air Monster Characters. Which Haringey school made the Animation about pollution? www.haringey.gov.uk/smartertravel



Nixy

What polluting chemical is Nixy?

.....
.....



PM brothers

Where does PM2.5 mainly come from?

.....
.....

8

Moving up to secondary school is a big milestone in every young person's life. We want you to be safe and to consider your journey carefully - remember to use the road safety skills you have practised at school.

Please describe how you would get to your secondary school by public transport from Tottenham Hotspur Football Club's stadium at 748 High Road, Tottenham N17 0BX.

.....

.....

.....

.....

.....

.....

.....

.....

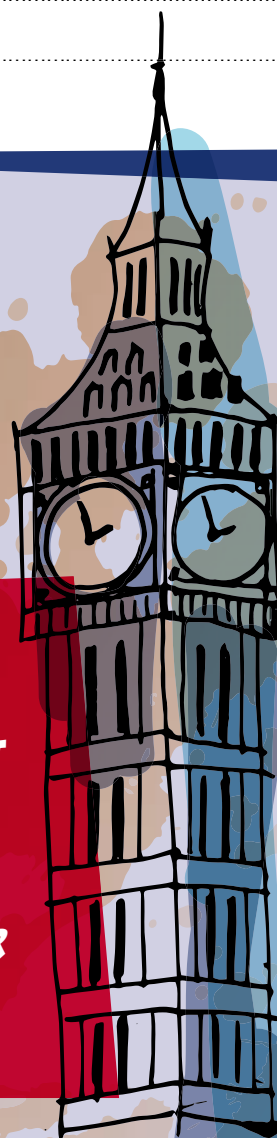
.....

.....

***CARS, MOTORCYCLES, LORRIES,
VANS AND BUSES DRIVING AROUND
LONDON CREATE MORE THAN 60%
OF THE AIR POLLUTION.***

***NEARLY HALF OF THE CAR TRIPS IN LONDON
MADE BY RESIDENTS, COULD BE CYCLED IN JUST
10 MINUTES.***

***THIS ALSO MEANS THE TRIP TO AND FROM YOUR
SCHOOL!***



Thank you for trying this fun competition.

Please remember to complete your important details on the form.

Stay Safe, follow the rules for crossing the road.

Check the Transport For London Website for up to date travel advice, regarding your Zip Oyster Card and using public transport.

Stop, Look, Listen, Think

Every time you Cross the Road

STARS

Transport for London want to make your transition to secondary safer and easier. Take some time to check the TfL STARS site to help you learn more about traveling safely in London.

Check out

<https://stars.tfl.gov.uk/>

for film clips and information to help your transition to year 7.

Evidence to your TfL STARS Accreditation

<https://stars.tfl.gov.uk/Explore/Idea/Details/1080>

