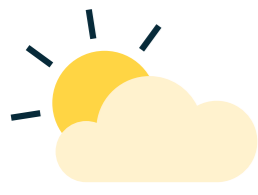




Our vision for Broadwater Farm

We want to shape the future of Broadwater Farm Estate to be a safe welcoming neighbourhood creating a lively place to be, ensuring quality homes that support the wonderful sense of community and create opportunities for residents to play, work and socialise through improved open spaces and facilities.

Your farm, your home, your views



Broadwater Farm Estate is changing.

In the coming years, Haringey Council and Homes for Haringey will be updating the estate to make it a better and safer place for existing residents to live, work and socialise as a community. Broadwater's strength lies in its diverse and strong community that shows real ambition to shape a better future for all generations.

After consulting with residents in 2018, we decided it was right to demolish Northolt and Tangmere due to structural issues. These blocks will be replaced with brand new homes for council tenants. We will also need to carry out works on other blocks on the estate to strengthen them and to ensure they all meet necessary fire and safety standards. We are currently working with architects KCA on design proposals for the new homes and wider layout improvement, and are eager to share the latest updates.

Our aim is to create and deliver the most comprehensive and wide-reaching Estate Improvements programme within the estates' history. We are committed to tackling inequality and building a fairer borough where all residents have access to good opportunities and can thrive.

A key part of this commitment is providing high-quality council owned homes, in safe, active, and welcoming neighbourhoods. We listened to all your feedback so now we want to make the changes together.

Our commitment is all residents are an integral part of the neighbourhood's future.



Thank you for those of you who have shared feedback so far.

This is an exciting time for the estate and we want to make sure any changes deliver on the wishes and aspirations of local people and build on what is already great about Broadwater Farm.

Based on your feedback we have identified five areas of transformation on the estate. We will share all updates and offer opportunities for participation, so all residents are at the heart of decision making and shaping the future of the estate.

Five areas of transformation:

- Improved open & green space
- Welcoming streets & better connectivity
- Safe & healthy neighbourhood
- High quality homes
- A positive future



Improved open & green space

Now more than ever we value the green and open spaces around us. We are looking at exploring what people would like to use these spaces for and how we can make more of the open spaces on the estate for everyone.



Welcoming streets & better connectivity

Our aim is to make the estate more accessible and welcoming. We are exploring improvements to streets and pavements, and better connections through the estate, to make getting around easier for walkers, cyclists, drivers and those jumping on the bus!

Safe & healthy neighbourhood

We want the future of the estate to be safe for all residents and visitors. This includes business owners, community groups and management of the buildings. Safety is key to the health and wellbeing of everyone.



High quality homes

At the heart of all works is our existing and proposed new council homes. We are committed to improving your homes to ensure they are safe, efficient and meet your needs so that the whole estate feels like home.



A positive future

We want to create equal training, employment and education opportunities for all residents and a place where people want to live and work for generations to come.



Stay updated with our progress



Over the coming months, there will be plenty of opportunities for you to find out more and get involved in shaping the future of the estate. These dates may change but we will do our best to keep you updated and answer any questions.

You can keep up to date with the latest news, sign up for upcoming events and give your feedback on developing designs for Broadwater Farm online: tottenham.london/explore/broadwater-farm

June 2021



Find out what's happening on Broadwater Farm



Spring exhibition
See the emerging design ideas for Broadwater Farm based on what you told us in the past year



Outdoor engagement hub
Join us for meetings, exhibitions or just drop by to our new space outside Croydon concierge

Summer 2021



Summer events
Look out for information about events to test some new activities and explore your priorities for the estate



Summer exhibition
Find out what we've heard from residents and have your say on your preferred designs for Broadwater Farm

Autumn 2021



Resident ballot on the future designs for Broadwater Farm



Winter 2021



Planning application
Once you've voted in the autumn, the recommended designs will be submitted to planning

Early 2022

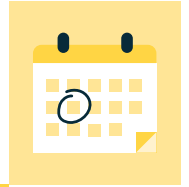


Construction begins
We will be looking to start some construction on site in 2022

Coming up in Spring 2021

All our events will be conducted outdoors and will follow government guidelines with social distancing measures and necessary health and safety considerations in place. Come along to our **new engagement hub** outside the concierge of Croydon block on Gloucester Road, where we will be holding our exhibitions, public drop-ins and pop-up events throughout the spring and summer!

For more information and to book your place for these events go online to www.tottenham.london/explore/broadwater-farm or call **020 8489 1816**.



Spring exhibition launch



Look out for posters in your entrances and exhibition boards up on the estate. You will also receive some information in the post and a full booklet of design information will be available from your concierge.

Open air drop-in exhibitions



8 June, 2.00pm - 7.30pm
12 June, 12.00pm - 4.00pm
17 June, 2.00pm - 7.30pm

See the developed design ideas for Broadwater Farm based on what we heard in the winter. Meet the architects and ask questions.

Community walkaround



12 June, 2.00pm - 3.00pm
17 June, 5.30pm - 6.30pm

As part of our open air drop-in exhibitions, join the architects for a walkabout around the estate to tell us what you would improve and what you think about the future of your neighbourhood.

Zoom online drop-in



10 June, 6.00pm - 7.30pm

Come along to the online drop-in event to find out about the developed design ideas, meet the architects and ask questions.

BWF Leadership Programme*



30 June and 1 July, 9.00am - 6.00pm
Broadwater Farm Community Centre

A two-day face to face programme to enhance existing skills and empower 25 people who live or work in and around Broadwater Farm.

Apply to Chanelle Farrell
Chanelle.Farrell@haringey.gov.uk

* Run by RoundTable Global www.roundtable.global

Have any questions?

Your views are important to us! Let us know what you think and if you have any questions or would like to sign up to attend an event call or email us on the details below:

✉ Jasmin.Emmanuel@homesforharingey.org
☎ **020 8489 1816**

