

Haringey's Rough Sleepers Strategy 2010 - 2012

Strategic and Community Housing Services



Foreword

It is unacceptable that in 2010 there are people in the capital that still find themselves sleeping rough on the streets. In Haringey, despite a relatively low street count in 2009 it is clear that there is still a problem with rough sleeping and more work needs to be done. Our vision is to make sure that we have no-one sleeping rough on the streets of Haringey by 2012.

Rough sleepers in Haringey are among the most vulnerable groups in the Borough, many have high support needs resulting from dependence on alcohol and drugs or have mental health issues. Whilst we need a zero tolerance approach to rough sleeping we must ensure that effective support networks are in place to help former rough sleepers sustain accommodation in the long term.

Over the next two years this strategy will ensure that these issues are addressed and that effective partnerships are sustained to meet the vision of this strategy.



Cllr John Bevan
Cabinet Member for Housing

Contents

Executive Summary	3
Introduction and overview	4
Scope of the Strategy	4
How we produced this strategy	5
Consultation on the strategy	5
The National Context	6
Our Context – the situation in Haringey.....	7
Who lives in Haringey?.....	7
Housing in Haringey.....	7
Rough sleeping in Haringey.....	8
Current Resources in Haringey.....	8
Links with other Strategies	9
Sustainable Community Strategy 2007 – 16	9
Housing Strategy 2009-19.....	9
Homelessness Strategy 2008 – 11	9
Supporting People Five Year Strategy 2005 – 10	10
Move-On Strategy 2010 – 15.....	10
Outcomes	10
What are our priorities and how are we going to achieve them	10
How we will implement and monitor this strategy	12
Rough Sleepers Strategy 2010-12 Draft Delivery Plan.....	14

Executive Summary

This strategy has been developed by the Integrated Housing Board (IHB) as a sub-strategy of the Homelessness Strategy 2008-11.

Our aim, through a zero tolerance approach to rough sleeping, is to reduce and sustain the numbers of people sleeping rough on the streets of Haringey to as close to zero as possible by 2012.

In order to deliver these our six priorities are:

1. To strengthen partnership working

Our aim is to provide a coordinated approach to delivering services to rough sleepers both locally and within our sub-region. We will make best use of the services available and to provide more opportunities for people to move into a settled home.

2. To adopt an early intervention approach

By strengthening our links with our partners and ensuring our services are accessible to rough sleepers we aim to stop people reaching the point of rough sleeping and respond immediately to those that do.

3. To provide targeted advice and accommodation options for rough sleepers

While joint working is a key factor in eliminating rough sleeping, we also need to provide targeted advice, plans and accommodation options to prevent people reaching the streets; and to move them off the streets.

4. To adopt an assertive approach to contact and outreach

Through developing a borough wide consistent and assertive approach to contact and outreach, we will move rough sleepers off the streets more quickly

5. To develop accommodation and support pathways.

We will develop initiatives and pathways to ensure that rough sleepers have access to accommodation with support when they need it, and a move to more independent accommodation when they don't.

6. To develop specialist interventions and pathways to independence.

To ensure that people do not return to rough sleeping we will consider the aspirations of the individual and develop innovative ways in meeting these needs.

Introduction and overview

Since the publication of the Government's first strategy to tackle rough sleeping, 'Coming in From the Cold' in 1999, there has been a sustained reduction in the numbers of rough sleepers. However, despite this reduction there are still significant numbers who find themselves sleeping on the streets.

In 2008 the Government launched its new strategy, 'No One Left Out', with a vision to end rough sleeping by 2012, a target that has been adopted for London in the Mayor's Housing Strategy.

This Strategy will be led by the Integrated Housing Board (part of Haringey's Strategic Partnership). Through delivery of this strategy the Haringey Strategic Partnership and its partners will provide a coordinated approach to tackling rough sleeping in the Borough. Over the next two years we will work together to reduce and sustain the numbers of people sleeping rough on the streets of Haringey to as close to zero as possible by 2012 in line with the Government's target³.

Scope of the Strategy

To meet our vision we will adopt through this strategy an assertive 'zero tolerance' approach to rough sleeping. We will seek with partners to tailor solutions so that they have maximum impact on the number of people sleeping rough in Haringey.

The CLG have defined rough sleepers into three categories:

- **Flow:** People who move onto the streets for the first time in the year and are not seen in subsequent years
- **Stock:** People who were sleeping rough in the previous year as well as the one in which the analysis is being undertaken. The stock group are those entrenched rough sleepers that are most at risk and typically hardest to get off the streets
- **Returners:** People who have been seen previously on the streets but not in the preceding year. The CLG are trying to understand why people who leave hostels return to the street. Move on is extremely important for returnee's. It has been researched that if

³ No One Left Out – Communities ending rough sleeping, Communities and Local Government (2008)

they stay in a hostel or supported housing unit for too long they are less likely to sustain their place

How we produced this strategy

This strategy has been developed by the Integrated Housing Board, a theme board of the Haringey Strategic Partnership and is a sub-strategy of the Housing Strategy 2009-19 and Haringey's Homelessness Strategy 2008-11.

We recognise that tackling the enduring problem of rough sleeping needs effective, sustained cooperation between a wide range of organisations. In the development of this strategy we sought to be as inclusive as possible and engaged with numerous organisations including; providers of outreach services, health services, the voluntary sector and rough sleepers. All partners are committed to ending rough sleeping in the borough and ultimately finding suitable long term solutions for Haringey's rough sleepers.

In the development of this Strategy we have used the Communities and Local Governments Self Assessment Health check. This was designed to help local housing authorities and their partners review what arrangements, interventions and services are in place and to assess the current capability to prevent and tackle existing levels of rough sleeping and explore the need for additional interventions. The outcomes of the Self Assessment along with feedback from our consultation with partners have been directly fed into the Strategy Action Plan.

Consultation on the strategy

Throughout the development of this Strategy, we have consulted with a wide range of groups, organisations and residents to make sure that we have identified all of the issues and formulate a responsive action plan. Over the last six months we have:-

- Consulted following the Council's Consultation Framework and Haringey's Compact agreement
- Held a regular multi-agency rough sleepers strategy steering group
- Held a Rough Sleeper's consultation event
- Circulated the draft strategy at the Supporting people partnership board
- Consulted the public between February and April 2010 by posting the strategy on the Council's website.

A separate report on the findings of the consultation has been produced and is available on Haringey Council's website.

The National Context

Since the publication of the Government's strategy on tackling rough sleeping in England, 'Coming in from the cold' in 1999, there has been over a two thirds reduction in the number of rough sleepers.

Evidence shows however, that whilst significant improvements were made in the last ten years there is still a constant flow of new people sleeping rough on the nation's streets (though most do not stay long) and that there is still much to be done in London, and in Haringey, to once and for all remove the need for anyone to live on the streets.

Results from the street counts carried out in London in 2009 show that a total of 265 people were found sleeping rough on any given night, an increase from the previous year's figure of 239.

Year	2005	2006	2007	2008	2009
Rough sleepers in London	221	267	248	239	265
Rough sleepers in England	459	502	498	483	464
% of rough sleepers found in London	48%	53%	50%	49%	57%

The CLG's 2008 strategy, 'No One Left Out: Communities ending rough sleeping' sets out the Government's intent to work with partners to end rough sleeping by 2012.

The Mayor's London Housing Strategy takes forward this vision for the capital by setting the same target to end rough sleeping by 2012 and establishing a London Delivery Board chaired by the Mayor's Housing Director to tackle the problem of rough sleeping. The Board has identified several priorities to help meet the 2012 target;

- Re-launching the London Reconnections Protocol to ensure that people can return to their home areas rather than sleeping rough in the centre of London
- Tackling the flow of new rough sleepers coming onto London's streets through better prevention work
- Ending rough sleeping for that cohort of very entrenched rough sleepers who have slept rough for more than 5 years (known as the RS205 project)
- Working with partners at the UK Border Agency and Jobcentre Plus to tackle the growing problem of rough sleepers with no recourse to public funds who require a specially targeted intervention
- Engaging with outer London boroughs and providers to improve their work to prevent rough sleeping

- Working with boroughs and providers to dramatically improve the proportion of rough sleepers moving on from hostel accommodation in a planned way

The CLG and Mayor of London are encouraging boroughs to work collaboratively within sub-regions and to develop sub-regional strategies to help end rough sleeping. The first was developed in East London and launched in December 2009. The North London sub-region, including Haringey, is also developing a sub-regional strategy for launch during 2010.

Our Context – the situation in Haringey

Who lives in Haringey?

Our Borough profile gives data about the make up of Haringey⁴. There are approximately 230,000 people living in Haringey. It is a very diverse Borough and ranks as the fifth most diverse borough in London; some 50% of our population overall, and three-quarters of our young people, are from ethnic minority backgrounds, and around 200 languages are spoken in the borough.

30% of Haringey's population live in wards ranked among the 10% most deprived in England.

There are many health issues and mental illness is particularly common in some of Haringey's newer refugees, whose members have often experienced traumatic experiences in their home countries⁵.

Housing in Haringey

As with other London Boroughs there is a shortage of suitable housing in Haringey.

We have high numbers of people living in temporary accommodation (TA). The current figure is just under 3496⁶ (May 10) from a high of 5449 in January 2008. While we are on track to meet our challenging target of 2603 by December 2010 there is much work to do.

Buying a home in Haringey is expensive; the average price is £327,804 whereas the average wage is £27,368 which is lower than the London average. There is polarisation in wealth between the east and west of Haringey. These lower wages and high house prices make it impossible for some people to ever buy a house.

⁴ http://harinet.haringey.gov.uk/index/news_and_events/fact_file/boroughprofile.htm

⁵ http://harinet.haringey.gov.uk/index/news_and_events/fact_file/boroughprofile.htm

⁶ OHMS data

Rough sleeping in Haringey

During consultations in the lead up to the launch of Haringey Homelessness Strategy, it became clear that there was a perception of an increase in rough sleeping over recent years. Haringey has conducted street counts over the last 6 years and while there was a significant reduction in rough sleeping in 2005, street counts in 2006/7, 2007/8 and in November 2008/9 confirmed that on the night of the counts more people were sleeping rough. The 2009 count returned a lower result that may not be entirely representative due to bad weather.

Rough Sleepers in Haringey 2004-10:

2004/05	2005/06	2006/07	2007/08	2008/09	2009/10
6 (Actual)	1 (Actual)	6 (Actual)	6 (Estimate)	10 (Actual)	3 (Actual)

A better indication of the numbers of rough sleepers is from contacts recorded by outreach teams and published in the CHAIN⁷ report. Data for 2008/2009 shows that 42 people were seen bedded down during this period; of those 36 were seen once, 6 were seen twice and 3 people were seen three times. During this same period 37 new people were contacted by the outreach team and 5 were already known.

Of the 47 people who were contacted by outreach services and/or arrived in or departed from accommodation in the period, 74% were male and 26% were female, with the majority being between the ages of 36 and 45. British nationals were most highly represented among this group (28) and there were only 2 who were A8⁸ or A2⁹ nationals. There are however concerns that the known number of A2 and A8 nationals is not a true representation of the prevalence of rough sleeping among this group. Recent estimates by outreach services¹⁰ indicate that there may be up to 8 people who originate from the A2 or A8 countries.

Many of the 42 rough sleepers seen bedded down had one or more support needs related to drug, alcohol or mental health problems. The report also identified the institutional history of people showing that 8 had been in care, 14 had been in Prison and 5 had been in the armed forces.

Current Resources in Haringey

- St Mungo's, Vartry Road Hostel, 188 Vartry Road, N15 provides 23 self contained bed sits with support. The entry criteria prioritise

⁷ Combined Homeless and Information Network

⁸ Slovenia, Slovakia, Hungary, Lithuania, Latvia, Poland, Czech Republic & Estonia

⁹ Bulgaria & Romania

¹⁰ Thames Reach Street Rescue

rough sleepers. Referrals to this hostel are via the Council's Vulnerable Adults team.

- Thames Reach Street Rescue - Have a dedicated outreach worker that covers Haringey and two other neighbouring boroughs. Currently around 80% of his time is spent in Haringey.
- The Muswell Hill Baptist Church at 2 Dukes Ave, N10 2PT provides a soup kitchen, Sun-Thurs; 7.45pm-8.45pm

Links with other Strategies

We have identified direct links to a number of existing key strategies. We will ensure that our aims in delivering this strategy are embedded within these and will work together with partners to deliver common priorities.

Sustainable Community Strategy 2007 – 16

The development of this strategy contributes to the Sustainable Community Strategy outcome 'Healthier people with a better quality of life' which recognises the need for more high quality, safe, settled and affordable housing. It seeks to 'promote independence and provide high quality support and care for those in the greatest need'¹¹.

Housing Strategy 2009-19

Haringey's Housing Strategy aims to create 'Neighbourhoods that people choose to live in with a balance of different types of homes which offer quality, affordability and sustainability for current and future generations'. The Rough Sleepers Strategy will in particular work to enable residents to make the most of housing opportunities, by ensuring that they receive the high quality advice and support which is responsive to individual needs, enabling choice and independence.

Homelessness Strategy 2008 – 11

This Rough Sleepers Strategy will develop some of the work already being undertaken to tackle homelessness in Haringey and help us to deliver Haringey's Homelessness Strategy, in particularly the first two objectives:

1. We will actively support and promote a partnership approach to preventing homelessness

¹¹ Sustainable Community Strategy 2007 – 16

2. We will invest in early intervention and effective homelessness prevention.

The Homelessness Strategy also identifies the need for improved services for rough sleepers who have been assessed as not being in 'priority need' within the meaning of the homelessness legislation.

Supporting People Five Year Strategy 2005 – 10

We will build on the priorities for tackling rough-sleeping outlined in this strategy. We will build effective links between key agencies and ensure that support networks are in place to help people break the cycle of rough sleeping.

Move-On Strategy 2010 – 15

Preventing and tackling rough sleeping is only one part of the puzzle. Through the Move-on Strategy we will ensure that pathways to independence for clients in short-term supported housing are made a reality, freeing up this type of accommodation for vulnerable groups such as rough sleepers.

Outcomes

Our aim, through a zero tolerance approach to rough sleeping, is to reduce and sustain the numbers of people sleeping rough on the streets of Haringey to as close to zero as possible by 2012.

What are our priorities and how are we going to achieve them

1. Strengthen partnership working.

Our aim is to provide a coordinated approach to delivering services to rough sleepers both locally and within our sub-region, to make best use of the services available and to provide more opportunities for people to move into a settled home.

Key actions are to:

- Ensure intelligence on rough sleeping is shared locally between partners
- Support the development of a sub-regional approach to rough sleeping
- Ensure that the Reconnections Protocol has been fully implemented
- Produce a directory of key services for advice agencies and key partners to support a Haringey wide Assertive Outreach Plan

- Develop a multi-agency task and targeting group to provide effective case management to bring rough sleepers off the streets.

2. Adopt an early intervention approach to prevent rough sleeping.

By strengthening our links with our partners and ensuring our services are accessible to rough sleepers we aim to stop people reaching the point of rough sleeping and responding immediately to those that do.

Key actions are to:

- Ensure effective information and promotion of advice services
- Develop with partners a drop-in/one-stop shop service for rough sleepers and people at risk of sleeping rough
- Ensure maintenance of good links with the Probation and Prison Services and the Metropolitan Police.
- Develop effective links with NHS Haringey

3. Provide targeted advice and accommodation options for rough sleepers.

While joint working is a key factor in eliminating rough sleeping, we also need to provide targeted advice, plans and accommodation options to prevent people reaching the streets; and to move them off the streets.

Key actions are to:

- Ensure that Housing Advice Services are equipped to offer advice to people sleeping rough
- Develop prevention and option plans for people discharged from hospital
- Establish adequate provision of emergency accommodation and ensure that effective referral mechanisms are in place
- Ensure the Severe Weather Emergency Protocols (SWEP) is in place and can be implemented quickly

4. Adopt an assertive approach to contact and outreach.

Through developing a borough wide consistent and assertive approach to contact and outreach, we aim to move rough sleepers off the streets more quickly

Key actions are to:

- Produce a Haringey specific outreach plan to set out a new collaboration of existing service, maximising outreach capability and promoting a zero tolerance approach to rough sleeping.
- Ensure outreach services are widely promoted
- Explore the development of a flexible approach to accessing primary health care and drug/alcohol services to help ensure the health and wellbeing of rough sleepers

5. Develop accommodation and support pathways.

We will develop initiatives and pathways to ensure that rough sleepers have access to accommodation with support when they need it, and a move to more independent accommodation when they don't.

Key actions are to:

- Make sure that rough sleepers have appropriate support networks
- Ensure adequate provision and effective move on from short term supported accommodation through Haringey's Move-on Strategy
- Develop initiatives to encourage rough sleepers into the private rented sector.
- Ensure effective use of the London Clearing House

6. Develop pathways to independence for rough sleepers.

To ensure that people do not return to rough sleeping we need to consider the aspirations of the individual and develop innovative ways in meeting these needs.

Key actions are to:

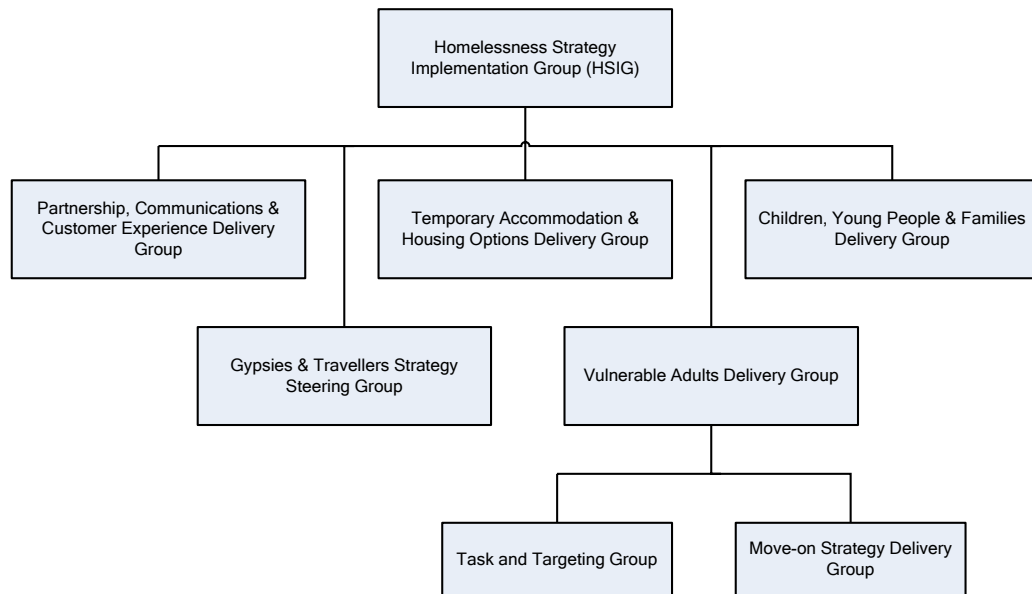
- Investigate, raise and help meet the long term aspirations of rough sleepers
- Through the task and targeting group develop an innovative approach to tackling rough sleeping which is co-ordinated and that takes individual circumstances into account.
- Ensure the continuation of support and care in the community through links with Haringey NHS
- Ensure effective pathways to employment

How we will implement and monitor this strategy

The delivery of this strategy will be overseen by the Integrated Housing Board, a thematic partnership board of Haringey Strategic Partnership.

Our existing Homelessness Strategy Vulnerable Adults Delivery Group meets regularly and their role will be to make sure that the actions in the implementation plan are being delivered and by monitoring performance demonstrate that they are successful. As well as reporting to the overarching Homelessness Strategy Implementation Group, and the Integrated Housing Board, this group will identify and share good practice between partners.

Structure of Haringey's Homelessness Strategy (2008-2011) Delivery Groups (revised 2010)



The Delivery Group will produce an annual review detailing progress made in that year and also look to future ways to deliver priorities.

In the development of our future approach to tackling rough sleeping we will also use Homeless Link's Prevention Opportunities Mapping and Planning Toolkit (PrOMPT). The toolkit promotes an approach that involves people who have direct experience of sleeping rough as experts in identifying pathways into rough sleeping and the points in the journey where more effective interventions would have helped¹².

The toolkit is based on the following principles:

1. No one should have to sleep rough in order to access services
2. Voluntary and statutory services need to work together to prevent rough sleeping
3. Rough sleeping should be tackled through strategic approaches, delivered locally
4. Much can be learnt directly from the views and experiences of those who have slept rough

¹² No One Left Out: Communities Ending Rough Sleeping (2009)

Rough Sleepers Strategy 2010-12 Delivery Plan

Priority	Key Actions	SMART Target	By when	Resources	By whom
1. Strengthen partnership working	Ensure intelligence on rough sleeping is shared locally between partners			Using existing resources	
	1.1.1 Explore the use of GOVx or an alternative secure facility to provide urgent alerts/and updates to key agencies	Agree framework implemented enabling partners to access information	November 2011		Housing Strategy and Partnerships Team
	1.1.2 Undertake an annual survey to identify Haringey's street population (currently street counts) in line with guidance from Communities for Local Government and report any trends to the Integrated Housing Board.	Findings recorded and incorporated into the Housing Needs Assessment	Annually (Nov)		Vulnerable Adults Team
	1.1.3. Liaise with Communities for Local Government and the Greater London Authority in relation to Haringey's 'famous faces'.	Services co-ordinated and individual options plans produced.	Every two Months		Vulnerable Adults Team
	Support the development of a Sub-regional approach to rough sleeping			Using existing resources	Housing Strategy and Partnerships Team

Priority	Key Actions	SMART Target	By when	Resources	By whom
	1.2.1 Co-ordinate and improve services across the sub-region.	Series of events programmed supporting the development of the sub-regional strategy and action plan.	March 2011		
	1.2.2 Explore a cross boundary approach to managing resources	As above	November 2011		
	1.2.3 Ensure data relation to disabilities is captured	Data made available through CHAIN	November 2011		
	1.2.4 Promote the use of PROMPT to inform sub regional forward planning	Use of PROMPT included in the sub regional action plan	November 2011		
	Ensure the Reconnections Protocol has been fully implemented			Using existing resources	
	1.3.1 Implement procedures to enable the monitoring of the number and destination of all reconnections.	Number and destination of all reconnections recorded and reported to the task and	November 2010		Housing Advice and Options and Vulnerable Adults Teams

Priority	Key Actions	SMART Target	By when	Resources	By whom
		targeting group			
	Produce a directory of key services for advice agencies and key partners to support a Haringey wide Assertive Outreach Plan	Directory produced and shared with partners	March 2011	Using existing resources	Housing Strategy and Partnerships Team
	Develop a multi-agency task and targeting group to provide effective case management and bring rough sleepers off the streets.			Using existing resources	Vulnerable Adults Team
	1.5.1 Identify key agencies that will form the task and targeting group	Key agencies identified.	June 2010		
	1.5.2 Timetable the first series of meetings	Annual series of meetings scheduled	July 2010		
	1.5.3 Ensure robust and transparent governance arrangements	Terms of reference produced and frequency of meetings agreed	August 2010		
	1.5.4 Clearly define and agree the roles and responsibilities for each service	Roles and responsibilities defined.	August 2010		

Priority	Key Actions	SMART Target	By when	Resources	By whom
2. Adopt an early intervention approach to preventing rough sleeping	Ensure effective information and promotion of advice services			Using existing resources	Housing Strategy and Partnerships Team
	2.1.1 Collate information leaflets/posters from services that advise and support people who are rough sleeping or who are at risk of rough sleeping	Information collated	November 2010		
	2.1.2 Provide partners/ stakeholders, including Libraries and Customer Services with information booklets/ posters to promote advice services and the 24hour free phone for reporting rough sleeping	Information distributed	November 2010		
	2.1.3 Review and amend all information (including on Haringey's website) to ensure it is up to date and contains all relevant information	Review and amendments completed.	January 2011		

Priority	Key Actions	SMART Target	By when	Resources	By whom
	<p>Develop with partners a drop-in/one-stop shop service for rough sleepers and people at risk of sleeping rough</p> <p>2.2.1 Identify a suitable venue, where partners could co-locate and provide existing services to rough sleepers and those at risk of sleeping rough in one place.</p> <p>2.2.2 Prepare a proposal for the HSI¹³/IHB¹⁴ for approval.</p> <p>2.2.3 Implement agreed.</p>	<p>Accommodation and service options evaluated</p> <p>Proposal submitted</p> <p>Service/surgery launched</p>	<p>November 2011</p> <p>November 2011</p> <p>July 2012</p>	To be identified	Vulnerable Adults Delivery Group
	<p>Ensure maintenance of good links with The Probation and Prison Service and the Metropolitan Police</p> <p>2.3.1 Reinforce current arrangements by developing a service level agreement (SLA) with the Probation Service</p> <p>2.3.2 Work with the Prison Service to establish a system to ensure</p>	<p>SLA consulted on and produced.</p> <p>SLA consulted on and produced.</p>	<p>March 2011</p> <p>March 2011</p>	Using existing resources	Vulnerable Adults Team

¹³ Homelessness Strategy Implementation Group

¹⁴ Integrated Housing Board

Priority	Key Actions	SMART Target	By when	Resources	By whom
	<p>offenders receive the support and advice they need at an early stage.</p> <p>2.3.3 Establish a process to share information with the Metropolitan Police where enforcement may result in people sleeping rough</p>	Process agreed and implemented	November 2011		
	<p>Develop effective links with NHS Haringey</p> <p>2.4.1 Build on the current arrangements with St Ann's Hospital by working in partnership with NHS Haringey to establish a system to identify all patients who are homeless or threatened with homelessness at an early stage</p> <p>2.4.2 Ensure that patients receive the advice and support they need prior to discharge (Linked to 3.2)</p>	Preventative arrangements in place	November 2011	Using existing resources	Vulnerable Adults and Housing Advice and Options Teams
3. Provide targeted advice and accommodation	Ensure housing advice services are equipped to offer advice to people sleeping rough.			Resources to be identified	Vulnerable Adults Delivery Group

Priority	Key Actions	SMART Target	By when	Resources	By whom	
options for rough sleepers.	3.1.1	Explore with partners the feasibility of delivering a rough sleeping awareness course for front line staff	Options evaluated and proposals made.	March 2011		
	3.1.2	Ensure that staff have access to and are aware of the services offered to rough sleepers and the referral arrangements for these services (linked to 1.4)	Rough Sleepers Directory promoted to all staff	March 2011		
	Develop prevention and options plans for people discharged from hospital				Using existing resources	Housing Advice and Options Teams
	3.2.1	Ensure that people in hospital who are homeless or threatened with homelessness receive Housing and options advice either at Council offices, via telephone or by home visit.	Approaches, method of access and outcomes of people leaving hospital monitored and reported to the Vulnerable Adults Delivery group	November 2011		
	3.2.2	Ensure that people who are in hospital and who are homeless or threatened with homelessness receive an assessment of their housing and support / special needs at the earliest possible stage prior to	As above	November 2011		Vulnerable Adults Team

Priority	Key Actions	SMART Target	By when	Resources	By whom
	discharge by November 2011				
	Establish adequate provision of emergency accommodation and ensure effective referral mechanisms are in place			Resources to be identified	Vulnerable Adults Delivery Group
	3.3.1 Explore the feasibility of securing emergency accommodation provision for rough sleepers within Haringey	Feasibility study completed and reported to Supporting People Partnership Board.	July 2012		
	3.3.2 Work with Haringey winter shelters, St Ignatius Housing Association and key support to review and continue the Haringey Winter Shelter pathway programme	Pathways reviewed and implemented	November 2010		Vulnerable Adults Team
	3.3.3 Ensure that officers are aware of all emergency accommodation provision and the referral pathways (linked to Key action 1.4)	directory updated and promoted	November 2010 and July 2012		
	Ensure the Severe Weather Emergency Protocol (SWEP) is in place and can be implemented			Using existing resources	

Priority	Key Actions	SMART Target	By when	Resources	By whom
	<p>quickly</p> <p>3.4.1 Ensure nominated officer has been identified to activate SWEP</p> <p>3.4.2 Review existing SWEP and agree resources/approach on a yearly basis</p> <p>3.4.3 Promote SWEP to all personnel and partners that may work with people who are or at risk of sleeping rough.</p>	<p>Nominated officer in place and SWEP activated</p> <p>Resources/approach reviewed annually</p> <p>SWEP promoted.</p>	<p>September 2010 and then annually</p> <p>As above</p> <p>As above</p>		Vulnerable Adults Team
4. Adopt an assertive approach to contact and outreach.	<p>Produce a Haringey specific outreach action plan to set out a new collaboration of existing services, maximising outreach capability and promoting a zero tolerance approach to rough sleeping</p> <p>4.1.1 Negotiate and implement an enhanced outreach service with Thames Reach Street Rescue</p> <p>4.1.2 Pursue funding sources targeted at rough sleepers to feed into and ensure the continuation of the enhanced</p>	<p>Enhanced service agreement implemented</p> <p>Further funding sources identified and applications made.</p>	<p>March 2010</p> <p>November 2010</p>	Resources to be identified	Vulnerable Adults Delivery Group

Priority	Key Actions	SMART Target	By when	Resources	By whom
	<p>4.1.3 Work with UKBA to develop and implement processes which will enable speedy identification of people who are not exercising or are not able to exercise their treaty rights</p> <p>4.1.4 Introduce the Balance Scorecard for outreach services to monitor effectiveness and support learning between teams/services</p> <p>4.1.5 Work with the Anti-social Behaviour Action Team, Community Safety and Neighbourhood Management teams to address street based anti-social behaviour and agree a process to instigate enforcement action when needed</p> <p>4.1.6 Develop and agree response times and a service 'offer' with each service that provide street outreach</p>	<p>Processes/ protocols in place</p> <p>Balance scorecard audit completed and action plan developed</p> <p>Processes/ protocols implemented</p> <p>Service offers agreed and implemented</p>	<p>November 2010</p> <p>November 2010</p> <p>November 2011</p> <p>November 2011</p>		<p>Task and Targeting Group</p> <p>Vulnerable Adults Team</p> <p>Task and Targeting Group</p> <p>Task and Targeting Group</p>
	Ensure outreach services are widely promoted (in conjunction with key	Services entered on Directory and,	November 2010	Using existing resources	Housing Strategy and Partnerships

Priority	Key Actions	SMART Target	By when	Resources	By whom
	action 2.1)	on the Council's website and distributed			
	Explore the development of a flexible approach to accessing primary health care and drug/alcohol services to help ensure the health & wellbeing of rough sleepers			Resources to be identified	Vulnerable Adults Delivery Group
	4.3.1 Collate evidence relating to the barriers that rough sleepers face accessing healthcare	Report produced	March 2011		Task and Targeting Group
	4.3.2 Consider the outcomes from the mobile doctor pilot and work with NHS Haringey with a view to implementing a similar scheme	Review of outcomes completed	March 2011		Vulnerable Adults Delivery Group
	4.3.3 Discuss service accessibility with relevant board/service and possibility of implementing a mobile doctor scheme in Haringey.	Recommendation on scheme implementation submitted to the relevant HSP Board	November 2011		Vulnerable Adults Delivery Group
5. Develop accommodation and support pathways for rough sleepers	Make sure that rough sleepers have appropriate support networks			Using existing resources	Vulnerable Adults Delivery Group
	5.1.1 Map existing services	Services mapped	March 2011		

Priority	Key Actions	SMART Target	By when	Resources	By whom
	5.1.2 Ensure that referral pathways are established (linked to 1.4)	Pathways defined and implemented	March 2011		
	Ensure adequate provision of and effective move on from short term supported accommodation through Haringey's Move-On Strategy	Move-On Strategy produced	July 2010	Using existing resources	Move-On Strategy Delivery group
	Develop initiatives to encourage rough sleepers into the private rented sector				Vulnerable Adults Delivery Group
	5.3.1 Promote Haringey's Deposit Guarantee Scheme (DGS) as a option for verified rough sleepers who have been assessed as being able to live independently with or without support	DGS launched and promoted	November 2010	Using existing resources	
	Ensure effective use of the London Clearing House (LCH)				Vulnerable Adults Delivery Group
	5.4.1 Ensure that all services are aware of the appropriate referral pathways to LCH (linked to Key Actions 1.4 and 5.4)	LCH entry in the Directory	March 2011	Using existing resources	
6. Develop pathways to independence for	Investigate, raise and help meet the long terms aspirations of rough sleepers				Task and Targeting Group

Priority	Key Actions	SMART Target	By when	Resources	By whom
rough sleepers.	6.1.1 Conduct PrOMPT survey every two years.	Survey carried out and results reported to the Vulnerable Adults Delivery Group	July 2012	Using existing resources	
	Through the Task and Targeting group develop an innovative approach to tackling rough sleeping which is co-ordinated and that takes individual circumstances into account			Using existing resources	Task and targeting Group
	6.2.1 Identify hotspots and develop plans to address them	Plans produced	March 2011		
	6.2.2 Utilise tactical operations to gather information and deliver the reconnections offer.	Increase take up of reconnections	March 2011		
	6.2.3 Assess and monitor the extent of rough sleeping by those with no recourse to public funds	Report produced	March 2011		
6.2.4 Review the format, approach and outcomes of the Task and targeting group	Approach reviewed and recommendations	November 2011			
	Ensure continuation of support and care in the community through links with Haringey NHS			Using existing resources	Vulnerable Adults Delivery Group
	6.3.1 Produce procedures to ensure	Procedures	November		

Priority	Key Actions	SMART Target	By when	Resources	By whom
	<p>the early identification of support needs.</p> <p>6.3.2 Implement procedures to ensure that staff liaise with support / care providers before a client moves into new accommodation.</p>	<p>agreed and in place.</p> <p>As above</p>	<p>2011</p> <p>November 2011</p>		
	<p>Ensure effective pathways to employment</p> <p>6.4.1 Establish links between services for rough sleepers with the Haringey Guarantee and any other employment schemes</p>	<p>Pathways to employment established</p>	<p>July 2012</p>	<p>Using existing resources</p>	<p>Vulnerable Adults Delivery Group</p>

Shqip

Ky dokument përcakton strategjinë e Haringejit për të reduktuar numrin e njerëzve që flenë përjashta në rrugët e Haringejit sa më afër zeros që të jetë e mundur deri më 2012. Ju lutem na thoni nëse doni një kopje të këtij dokumenti në gjuhën tuaj dhe dërgojeni formularin tek adresa e mëposhtme me Postim Falas.

Polski

Niniejszy dokument wyznacza strategię gminy Haringey niemal całkowitego zredukowania do roku 2012 liczby osób nocujących na ulicach dzielnicy. Osoby, które chciałyby otrzymać dokument w języku polskim proszone są o wypełnienie formularza i odesłanie go bezpłatnie na podany poniżej adres.

Français

Ce document présente la stratégie de Haringey pour réduire les effectifs de personnes de Haringey dormant à la rue autant que possible voire zéro avant 2012. Si vous souhaitez recevoir un exemplaire de ce document dans votre langue, veuillez nous en informer et renvoyer le formulaire à l'adresse en port payé ci-dessous.

Soomaali

Warqaddan waxa ku qoran istraatiijiyadda Haringey ee lagu dhimayo tirada dadka derbiyada seexda ee u hoyda dariiqyada Haringey u hoyda sida ugu dhaw loogu cidhibtirayo illaa laga gaadhayo 2012. Fadlan noo soo sheeg haddii aad rabto koobbi warqaddan ah oo luqaddaada ku qoran oo foomka noogu soo dir cinwaanka boostiisu lacag la'aanta yahay ee hoose.

Kurdî Kurmancî

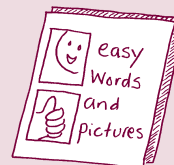
Ev dokument li ser stratejîya Haringeyê agahîyê dide, ku hejmara mirovên bêmal ên li kuçan radikevin heta 2012an heta ku dibe daxê nêzîkî 0ê. Heke hun kopîyeke vê dokumentê bi zimanê xwe dixwazin, ji kerema xwe bi tijekirin û şandina vê formê bo navnîşana posta bêpere ya jêrîn, ji me re bibêjin.

Türkçe

Bu broşürde, Haringey Belediyesi'nin 2012 yılına kadar Haringey sokaklarında uyuyanların sayısını sıfıra düşürme stratejisinin ana hatları açıklanmaktadır. Eğer bu broşürü Türkçe olarak edinmek istiyorsanız lütfen bu formu doldurup aşağıdaki ücretsiz posta adresine gönderin.

Please tell us if you would like a copy of this document in another language that is not listed above or in any of the following formats, and send the form to the Freepost address below.

- In large print On audio tape In Braille
- In another language, please state:



Name: Tel:

Address:

Email:

Please return to: Freepost RLXS-XZGT-UGRJ, Haringey Council, Translation and Interpretation Services, 8th Floor, River Park House, 225 High Road, London N22 8HQ

Haringey Council offers this translating and interpreting service to Haringey residents. We can translate this document into one language per resident ONLY. Rough sleepers strategy



This is printed on recycled paper. When you have finished with it, please recycle.

Published by Haringey Council's Communications Unit 150.9 • 11/10