



Streetspaces Bid 2(b) – Additional Pavement Widening

Project Name

Green Lanes Pavement Widening

Location (inc. coordinates)

329 - 575 Green Lanes N4 - Eastings: 531816 Northings: 188390 Green Lanes N8: -
Eastings: 531718 Northings: 189044

Project ID

LBH_LSP_009_PW

Amount of funding requested

Design and PM Fees

£39,325

Implementation Costs

£226,117

Monitoring

£0

Borough funding contribution (if applicable)

£0

TOTAL FUNDING REQUIRED

£265,442

Type of intervention

Strategic Cycle Route

No

Low traffic neighbourhoods

No

Space at town centres

Yes

Description:

Government guidance on social distancing remains in place. The Covid-19 pandemic has changed the way our high streets are operating. Retailers are rightly adhering to the social distancing guidelines but this is leading to long queues outside shops, which are reducing pavement space and creating 'pavement pinch-points'.

Haringey's Operations Service have identified several busy high streets/shopping parades that would benefit from long term pavement widening works to increase pedestrian capacity, improve pedestrian accessibility and road safety. Creating a space that is more flexible to meet the needs of the businesses.

In order to enable Londoners to make sustainable local journeys and reduce their need to use public transport and the private car we need to make Haringey's town centres and high streets safe and attractive places to shop.

Green Lanes is approximately 1.5km long with shops, cafes, restaurants, postal services on both sides of the road. The surrounding area is predominantly residential with several primary schools and places of worship. The pavements on some sections of Green Lanes are narrow and not appropriate for social distancing, therefore it is imperative that they are widened. We will also work with local businesses to relocate A-boards and will relocate street furniture to maximise footway space. Therefore, it is hoped that the pavement widening works, will support Haringey's economy by enabling social distancing more easily, making it easier for people to visit shops and businesses more safely.

Is this an existing scheme and/or previously funded by TfL?

No

High level programme information

Construction Start Date

June 2020

Construction end date

September 2020

Impacts to traffic signals (as per Figure 1)

None

Impacts to bus assets or operations

Bus routes affected

141, 29, N29, 341

Bus journey time impacts

None

Bus stops affected

HH, HK, HN, HM

Benefits to bus assets or operations

None - business requirements accommodated within the design

Impact on freight (servicing and delivery)

business requirements accommodated within the design

Connections to strategic cycle routes

Boroughs Connected to

Hackney

Routes connected to

n/a

Impacts on protected groups

Widening the footways will provide positive impacts for those with limited mobility and those using pushchairs etc. All measures will be designed to ensure that they do not negatively impact on those with limited mobility and visual impairments.

Consideration on crime reduction

Additional walking and activity increase natural surveillance thereby positively contributing to crime reduction

Plans

Green Lanes (Harringay Ward)

This product includes mapping data licensed from Ordnance Survey with the permission of HMGO © Crown Copyright LBH 2011. All rights reserved. License number 100019199

NOTES:

Rev	Description	Checked	Date

PROJECT: LBH - SOCIAL DISTANCING MEASURES GREEN LANES N8

TITLE: BASE PLANS SHEET 1 OF 3

DATE: 2020-09-01

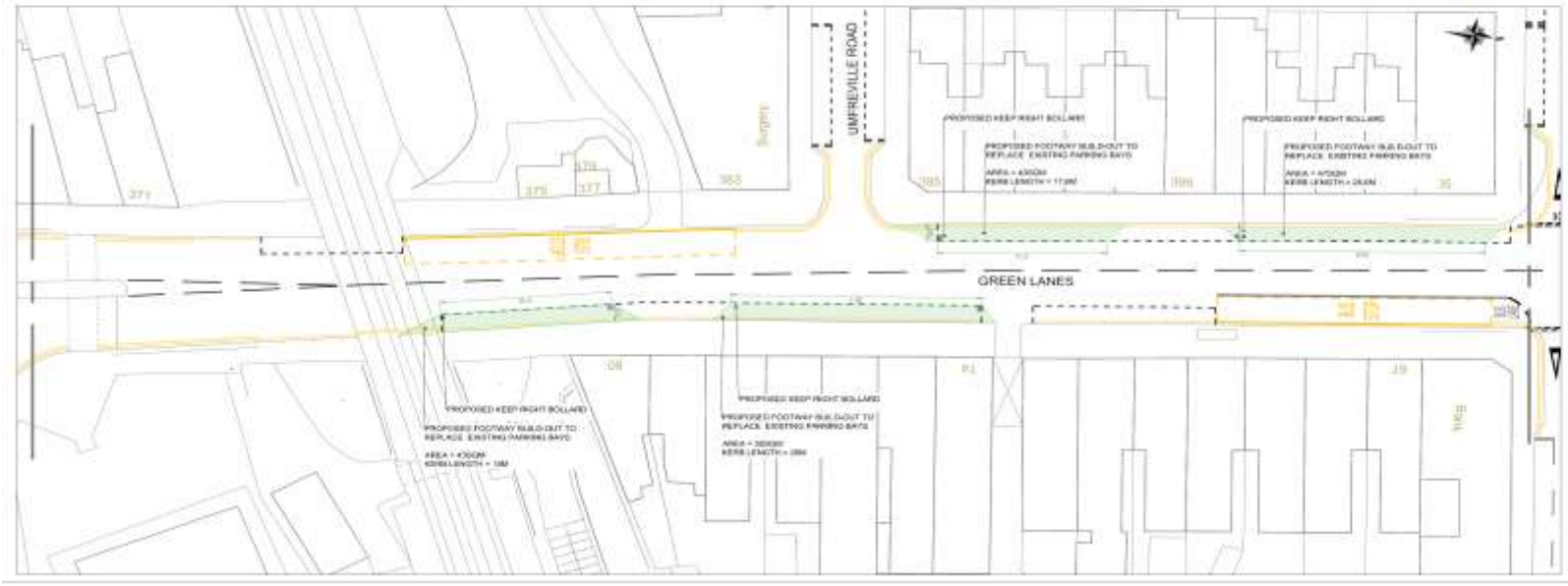
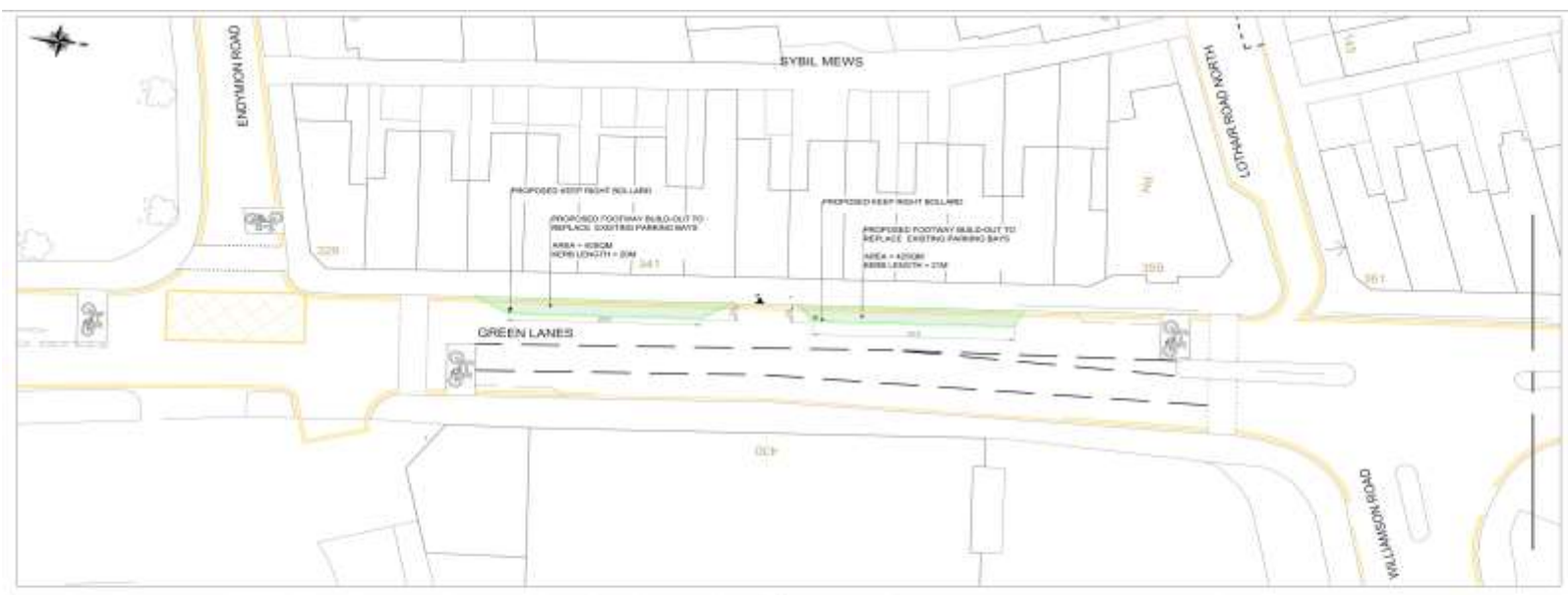
Created: YK Drawn: YK Checked: MW
 Scale: 1:250@A1 Date Drawing Created: 20/09/2020

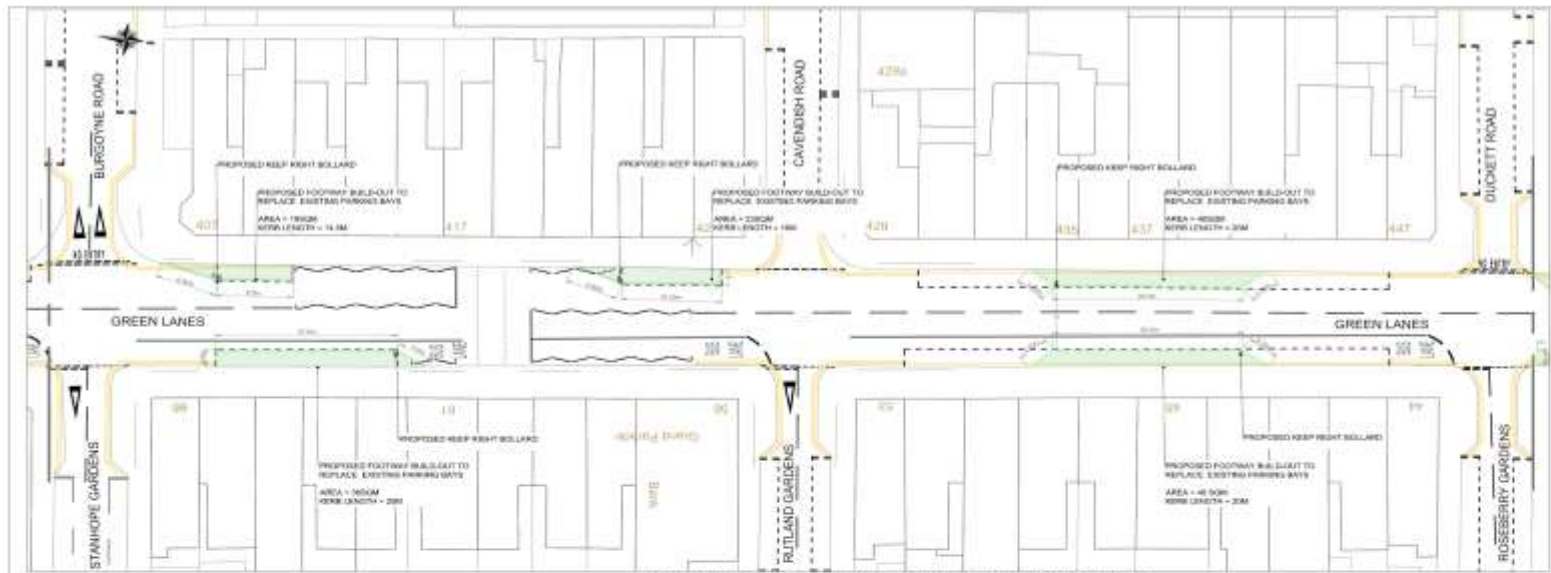
DWG NO: R:\HWP-000-ref

PLACE & SUSTAINABILITY
 SINGLE FRONTLINE

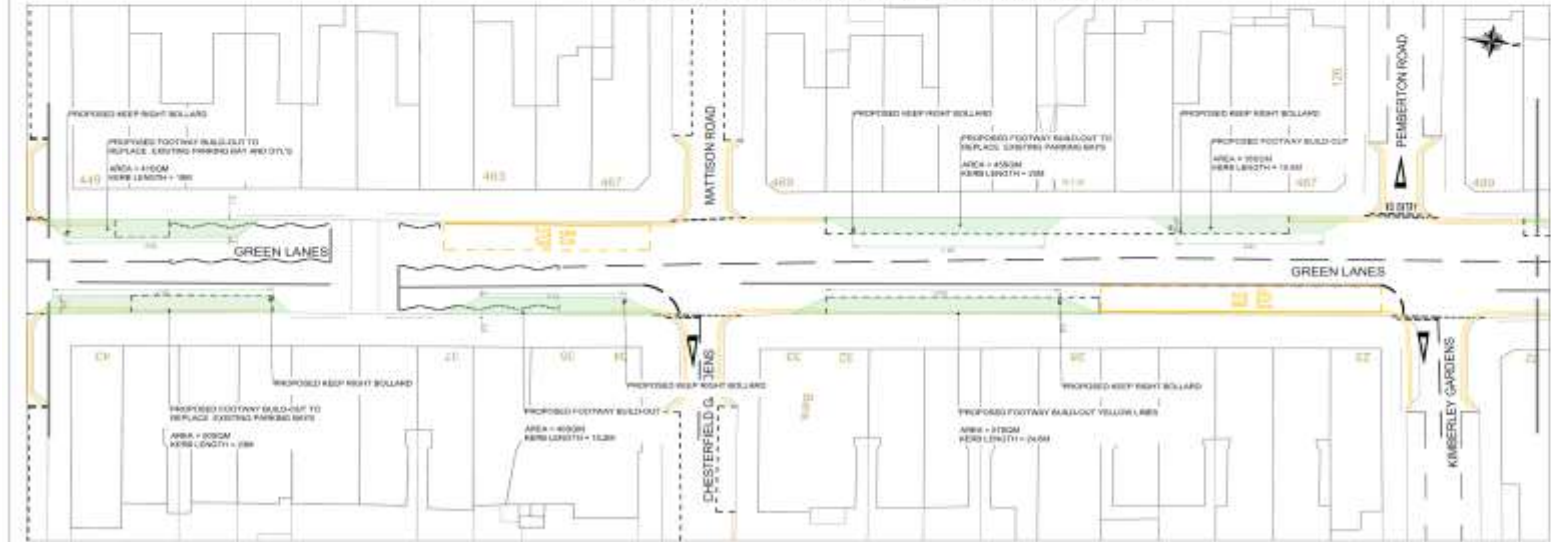


www.haringey.gov.uk





BURGOYNE ROAD TO DUCKETT ROAD - PROPOSED MEASURES



DUCKETT ROAD TO PEMBERTON - PROPOSED MEASURES

This product includes mapping data licensed from Ordnance Survey with the permission of HMSC © Crown Copyright LBH 2011. All rights reserved License number 100019100

NOTES:

Rev	Description	Checked	Date

Project: LBH - SOCIAL DISTANCING MEASURES GREEN LANES NS

Title: BASE PLANS SHEET 2 OF 3

File: [C:\projects\social_distancing\plan\plan_2.dwg](#)

Designed: YK	Drawn: YK	Checked: MW
Scale: 1:250@A1	DM Drawing Code: 000000	

Dwg No: SOLBH/GL/02

PLACE & SUSTAINABILITY SINGLE FRONTLINE

1000191000 - 1000191000 - 1000191000 - 1000191000 - 1000191000



This product includes mapping data licensed from Ordnance Survey with the permission of HMSO © Crown Copyright LBH 2011. All rights reserved. License number 100019199.

NOTES:

Rev	Description	Checked	Date

Project: LBH - SOCIAL DISTANCING MEASURES GREEN LANES NS

Title: BASE PLANS SHEET 3 OF 3

Rev: 1

Design	Drawn	Checked	Rev
YK	YK	##	

Scale: 1:250@A1 Date Checked: 03/08/2020

Dwg No: RJHWP-###-ref

PLACE & SUSTAINABILITY
SINGLE FRONTLINE

10 Place & Sustainability, 100 Broad Street, Birmingham, B3 2QU
Tel: 0121 253 3300 Fax: 0121 253 3301
www.placeand.sustainability.co.uk