

March 2022

# Community Infrastructure Levy Charging Schedule

Section 211(1), Planning Act 2008 (as amended)  
Part 3, CIL Regulations 2010 (as amended)

1. The Charging Authority

1.1 The London Borough of Haringey is the ‘Charging Authority’.

2. Date of Approval

2.1 This Charging Schedule was approved by the Council on 14 March 2022.

3. Date that Effect

3.1 This charging schedule will come into effect on 1 September 2022.

4. CIL Rates

4.1 The Council charges different rates of CIL by the land use of a proposed development (expressed as pounds per square metre) and by the area where a proposed development is situated, as set out in Table 1 below.

Table 1: CIL rates

Use	CIL charge (£/square metre)		
	Western	Central	Eastern
Residential	£368.12	£229.21	£50
Student accommodation	£368.12	£229.21	£85
Build to Rent housing	£368.12	£229.21	£100
Supermarkets	£131.97		
Retail Warehousing	£34.73		
Office, industrial, warehousing, small scale retail	Nil Rate		
Health, school and higher education	Nil Rate		
All other uses	Nil Rate		
<p>Superstores/supermarkets are defined as shopping destinations in their own right where weekly food shopping needs are met and which can also include non-food floorspace as part of the overall mix of the unit. Retail warehouses are large stores specialising in the sale of household goods (such as carpets, furniture and electrical goods), DIY items, and other ranges of goods, catering mainly for car borne customers. Build to Rent is housing development which meets the definition set out in policy H13 of the London Plan 2021</p>			

## **5. Charging Zones**

5.1 The CIL charging zones referred to in the above table are illustrated on the Charging Zone Map attached at Appendix 1 of this document.

## **6. Calculating the Chargeable Amount**

6.1 The amount to be charged for each development will be calculated in accordance with Schedule 1 of the Community Infrastructure Levy Regulations 2010 (as amended). For the purposes of the formulae in Schedule 1, the relevant rate (R) is the rate for each charging zone shown in Table 1 above.

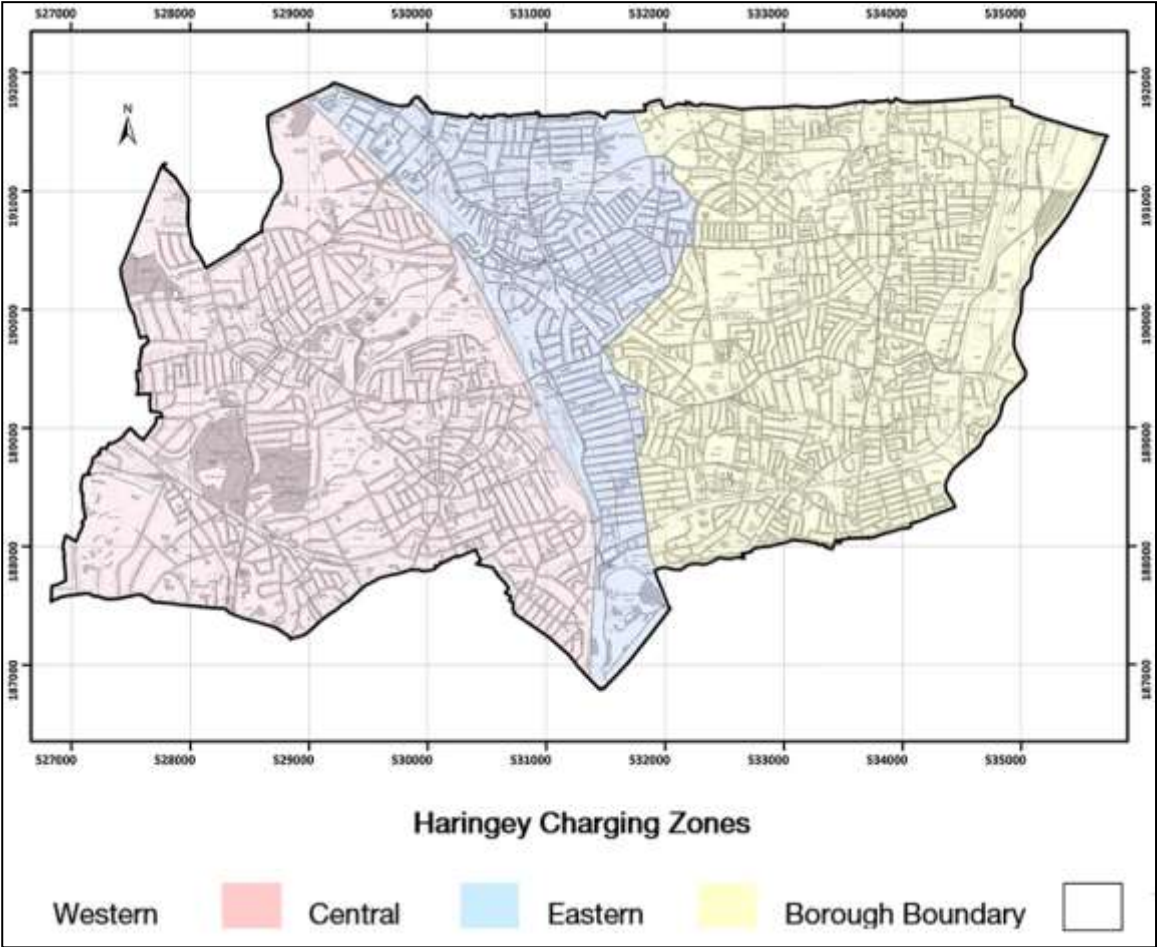
## **7. Statutory Compliance**

7.1 The Charging Schedule has been issued, approved and published in accordance with the CIL Regulations 2010 (as amended) and Part 11 of the Planning Act 2008 (as amended).

## **8. Further Information**

8.1 Further information on the Community Infrastructure Levy is available on the Council's website [www.haringey.gov.uk/CIL](http://www.haringey.gov.uk/CIL)

Appendix 1



Map showing the charging zones within Haringey