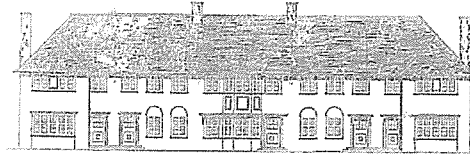


375



THE CHINE AND CASCADE RESIDENTS ASSOCIATION
57 The Chine, London N10 3PX 020 8883 6245
ccra@live.co.uk

Dear Sirs,

With reference to the change of status of the Pinkham Way site , our Residents Association, The Chine and Cascade Avenue Residents object to the development on the following grounds;
The change of designation of the Pinkham Way site from employment use to industrial use. Formally referred to as "employment land designations in SP8 Employment of the Core Strategy, change of land designation for DEA6 from employment land to locally significant industrial site"

375/1
The site was previously listed as green space and this listing should be protected.

The environmental impact of using the site for industrial use, particularly when the site is very close to a built up residential area and local schools.

The loss of land for employment use and the impact this will have on creating new jobs.

On these grounds we as an association strongly object to the development.

Yours sincerely, Vivienne Constad
Chair person at CCRA.