

**TABLE OF
CONTENTS**

Chapter 1: Introduction	
Chapter 2: Key Principles	
Chapter 3: Sustainability and Energy Efficiency	
Chapter 4: Footway and Carriageway Surfaces	
Chapter 5: Street Furniture	
Chapter 6: Traffic Management Schemes	
Chapter 7: Town Centres & Conservation Areas	
Chapter 8: TLRN Roads	
Chapter 9: Maintenance	





Chapter I

Introduction

Introduction

INTRODUCTION

We have prepared this Manual as part of our continuing commitment to improve the quality of our streetscape and to raise the image of our Borough. The 'Better Haringey' Programme has already improved the environmental quality of our Borough and this Manual describes how we intend to maintain and improve on this.

Key Principles

It is recognised that some of Haringey's streets are increasingly cluttered with signs, bollards and guard railing which are unsightly and detract from the visual character of our Borough. However, we want to make a change, and create a more user friendly and attractive streetscape. The Manual identifies some key principles to help us achieve this change and these are discussed in the following chapter.



Before - Cluttered streetscape



After - Uncluttered streetscape

By following these key principles, the ease of movement for those using our streets will improve, the character of our historic and conservation areas will be enhanced, and regeneration within our town centres will be promoted.

Recent reports and national publications have highlighted the issue of bad streetscape design and we believe our key principles will go a long way to addressing these.

Our Streetscape Manual complements those produced by Transport for London, “Streetscape Guidance - Consultation Draft” and English Heritage, “Streets for All”, both of which aim to redress the balance of vehicles, cyclists and pedestrians and the need to enhance the quality of the streetscape.

Various agencies and bodies are involved with our street environment, for example Transport for London and utility companies. We recognise a co-ordinated approach between ourselves and these agencies is necessary to achieve a high quality streetscape.

Contemporary furniture and high quality materials can promote town centre regeneration – Wood Green Town Centre



Aim of Streetscape Manual

The aim of our Streetscape Manual is to:

- Improve the environmental quality of Haringey's streetscape.
- Set consistent specifications for streetscape elements (e.g. street furniture and footway materials) across our Borough.
- Establish guiding principles for the design and layout of streetscape elements.
- Encourage good design and innovation and not be overly prescriptive.
- Provide a good practice reference document for our Council and other agencies.
- Provide a framework for the town centre strategies we are developing.

- Encourage the development of civic pride and a sense of ownership by enabling residents and local stakeholder groups to understand our vision for Haringey's streets.

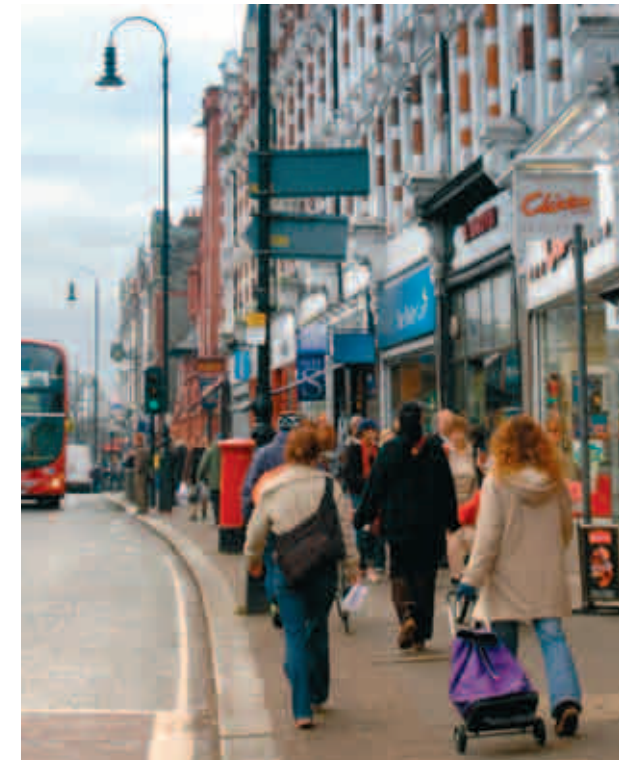
Who is the Manual for?

Those who design and maintain the streetscape in Haringey will use the Manual as a reference document. Council departments, contractors, developers, transport agencies and utility companies will all use the Manual. It will also provide stakeholder groups, businesses and residents with a statement of the Council's aspirations when designing and maintaining the Borough's streetscape.

The guidance in the Manual is non-statutory but does link into UDP policies concerning town centres, conservation and the protection of the environment. The guidance will aid developers in

understanding the requirements of the Council in terms of streetscape improvements where they relate to Section 106 and 278 agreements.

Some town centres have special street furniture requirements, (Muswell Hill)



Format of the Streetscape Manual

Due to legal and time constraints it will not be possible to adopt the Manual as Supplementary Planning Guidance (SPG). The Council may however look to develop the Manual as a Supplementary Planning Document. The Council will also explore the possibility of incorporating the Key Principles of the Manual into the existing draft SPGs.

Following this introduction, Section 2 sets out the key principles for Haringey with the aim of creating a safer, more user friendly and attractive streetscape.

Section 3 discusses footway and carriageway surfaces whilst Section 4 addresses street furniture including bollards, litter bins, street lighting and seating.

Section 5 discusses traffic management measures which are being introduced in the Borough to improve road safety.

In these chapters each streetscape element is described, good practice is assessed and appropriate location and specifications of material and furniture are discussed.

Section 6 discusses the town centres and conservation areas of Haringey - some are recognised as having particular design requirements.

Section 7 addresses Transport for London Road Network (TLRN) roads and the need for coordination between the Borough and Transport for London, while Section 8 discusses the importance of maintenance to the quality of the streetscape.

The Appendices to the Manual provide streetscape design sheets which further specify the materials and furniture in greater detail. These design sheets are referred to by number throughout the Manual for ease of use.