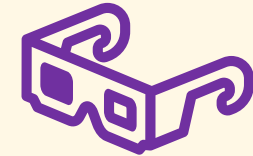
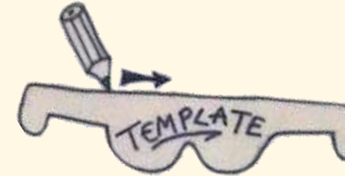


How to make colour filter specs



1. Draw around the specs template (located on the next page)



2. Cut out the specs, including the eye holes. Try them on to make sure they fit and that you can see through them.



3. Decorate the specs with a design of your choice.



4. Choose two different cellophane colours. Cut them slightly larger than the eye holes. Stick them over the eyeholes from the back of the specs.



Why not have a look around. Look at different colours-how different do they look? What does red look like when you look at it through red?

Why not try different colours combinations to see what happens.

Have fun but remember to never look directly at the sun.

Glasses Template



Print the template on A3 Card and cut it out.

