

Monday

Quilting/Sewing Group

Starts 16th January

9.30am-11.30am

Term Times

Share your Creative skills as we make a wall hanging together

*Contact Woodlands Park Children's Centre's Reception to Book on 02088020041



Men are welcome at all our Sessions

**Woodlands Park Children's Centre
January—March 2012
Activity Time**

Tuesday

Citizens Advice Bureau Sessions

Benefit and debt **from 3/1** management advice. Come in and see us to make sure you & your family are getting everything you're entitled to.

9.30am-12.30pm



Gardening Club **from 17th January**

Come and help us to grow fruit and vegetables in our community garden. We have planted potatoes, strawberries, fruit bushes and much more.....

10am -12pm

Ante Natal Appointments

12.30pm-4.30pm
Ring North Middlesex University Hospital on 020 8887 2581



Transition into Parenthood **from 3/1**

An ante-natal drop in group for pregnant women and their families to address concerns and provide advice.

1.00pm-3.00pm

Wednesday

Singing Music 0-5yrs **From 18th January**

Session 1) 9.45-10.30am

Session 2) 10.45-11.30am

Meet other parents and children to sing, dance and enjoy music together..

*Places are limited to 18 per Session!



HALS: Family English Stage 2 Levels ESOL E1-E3

Starts 18th January

Term time only
(Crèche provided)

1.00pm-3.30pm

*Contact centre to book on 0208 802 0041 or

HALS on;
0208 489 2500

Learn with Haringey

Thursday

Breast Feeding Support

A friendly drop-in session provided by trained members of the Breastfeeding Network.

10am-12pm **from 5/1**

TOPS GROUP

(Toddler Opportunity & Parents Support)

from 19th January

An invitation only group for parents of children with additional needs or parents who need extra support.

9.30am-11.30am

Me & Little Footprints **from 19th January**

A group for first time parents and their new born..

Information on baby development and advice on weaning, teething, sleeping etc...

1.00pm-3.00pm

For children under one.

Baby Weighing Clinic

(first Thursday monthly)

1.00pm-3.00pm on:

2nd February

1st March

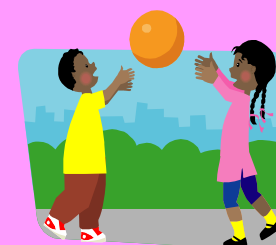
Friday

Stay & Play 0-5yrs/ Childminders

Group from 20th January

A chance for you and your children to make new friends and play together..

9.30am-11.30am



Markfield Monthly Sessions

MARKFIELD

10.00am-12.00pm

on the following dates:

6th January 2012

2nd February 2012

2nd March 2012

