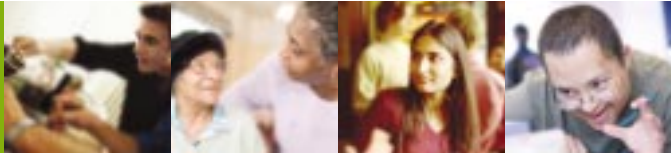


Services for all



Supporting People

Who to contact if you want more information about the support you need



Haringey Council's Supporting People wants to help people look after themselves and to be as independent as they can.

We can help you with these problems.

Maybe you want to find a place to live or set up home.

Maybe you are threatened by eviction.

Maybe you can't pay your rent and are worried that you may have to leave your home.

You may be having problems looking after yourself and may need help to do this.

You may live on your own and need someone to visit and make sure you are safe and well.

You may want supported housing.

Perhaps you don't feel safe at home and want an alarm to call for help if you need it.

Maybe you need more benefits and don't know how to get them.

Supporting People can help with housing support, access to healthcare services, training, and education.




Where to go for help

This list of questions should guide you to the Supporting People support service that meets your needs. Please use the contact details to get in touch with the right service for you.


To find out about the full range of services available from Haringey Council, including those offered through Supporting People, visit our website at:


 www.haringey.gov.uk or talk to a customer advisor on


 020 8489 0000.

Are you or a relative receiving help from the NHS or Social Services for mental health needs and in need of advice or support?

Contact: **Accommodation Development Officer**


 Haringey Council
40 Cumberland Road
Wood Green
London N22 7SG

 020 8489 3772

 www.haringey.gov.uk

Are you an older person or do you have a disability and have difficulty fixing things in your home, or need help with gardening?

Contact: **Metropolitan Care and Repair**

 020 8829 8310

Are you threatened by eviction, homelessness or are you having problems at home?

If you are aged between 18 to 60 and you:

- don't have anywhere to live
- have mental health needs
- use drugs or drink too much
- are an offender or former offender
- or a relative or friend have HIV or Aids
- are a young person with no family or friends to turn to and need housing advice and support
- have come to this country seeking safety and you are a recognised refugee.

Contact: **Vulnerable Adults Team**

✉ Haringey Council
Apex House
Tottenham
London N15 5PQ

☎ 020 8489 4293

🌐 www.haringey.gov.uk

Do you have a learning disability and need a home of your own with support?

Contact: **Haringey Learning Difficulties Partnership**

✉ Unit 5, St George's Estate
White Hart Lane
London N22 5QL

☎ 020 8489 1384

Are you over 60 and do you need supported or sheltered housing?

Contact: **Supported Housing Assessment Team**

✉ Haringey Council
Woodside House
294 High Road
Wood Green
London N22 8YX

☎ 020 8489 2301

If you are leaving local council care and are 16 or approaching 16 and needing housing advice and support.

Contact: **Accommodation Team Manager**

✉ The Children and Young People's Service
Compton Crescent
London N17 7LD

020 8489 5823

Are you a young person who needs support or advice about housing, education, training or employment?

You, a relative, or friend can contact: **Connexions Advisors**

✉ Haringey Council
Apex House
820 Seven Sisters Road
Tottenham
London N15 5PO

☎ 020 8489 4255

Supporting People also provides services to help local people in their own homes.

We can help you to find healthcare, education, training and provider interpreters if you want to find out about services or information in a different language.

Key Support for single people and couples with no children:

☎ 020 8347 2327

HARTS for families:

☎ 0845 303 2350

Sixty Plus for people aged 60 and over:

☎ 0800 652 6100
020 8275 4300

Are a victim of crime? Do you live alone? Are you afraid that you may have an accident and not be able to call for help?

Contact: **Haringey Safe and Sound Team**

☎ 020 8489 2365

Are you are a survivor of domestic violence and in need of support and advice on where you can go to be safe and to get help?

Contact: **Hearthstone Domestic Violence and Support Centre**

☎ 020 8888 5362

For more information about Supporting People services and the leaflets available, contact:

✉ **Supporting People Programme**
40 Cumberland Road
Wood Green
London N22 7SG

☎ 020 8489 3344

✉ supporting.people@haringey.gov.uk

Supporting People has information on services that can help you cope with life challenges. For a free copy in your own language, please fill in the form and return to the address below.

Albanian



Mbështetja e Njerëzve (Supporting People) ka informata mbi shërbimet që mund t'ju ndihmojnë t'i përballoni sfidat e jetës. Për një kopje falas në gjuhën tuaj, ju lutem plotësoni formularin dhe kthejeni tek adresa e mëposhtme.

French



Supporting People contient des informations sur les services qui peuvent vous aider à faire face aux épreuves de la vie. Pour en obtenir un exemplaire gratuit dans votre langue, veuillez remplir ce coupon et le renvoyer à l'adresse ci-dessous.

Somali



Taageerista dadka (Supporting People) ayaa haysa macluumaad ku saabsan adeegyada oo kaa caawin kara inaad inaad la qabsato wixii nolosha kaa hor yimaadda. Si aad u hesho koobbi ku qoran luqaddaada, fadlan buuxi foomka oo ku soo celi cinwaanka hoose.

Bengali



‘সাপোর্টিং পীপল্’এর মধ্যে এমন বিভিন্ন ধরনের সেবা সম্পর্কে তথ্য দেওয়া আছে যেগুলি জীবনের নানা সমস্যার মোকাবেলায় আপনাকে সাহায্য করতে পারে। আপনার নিজের ভাষায় এটার কপি পাওয়ার জন্য, ফর্ম পূরণ করুন এবং নিচের ঠিকানায় ফেরত পাঠান।

Kurdish



Supporting People (Piştewanîya Mirovan) li ser xizmetên ku dikarin ji bo dijarîyên jîyanê alîkarîya we bikin agahdarî heye. Ji bo kopîyeke bêpere bi zimanê we, ji kerema xwe formê tije bikin û ji navnîşana jêrîn re bişînin.

Turkish



‘Supporting People’, yaşamın zorluklarıyla başa çıkabilmenize yardımcı olabilecek hizmetler konusunda bilgiler içermektedir. Kendi dilinizde ücretsiz bir kopya için lütfen formu doldurup aşağıdaki adrese gönderin.

Please tell us if you would like a copy of this leaflet in any of the following formats, and send the form to the freepost address below.

In large print On disk On audio tape In Braille



In another language, please state:

Name:

Address:

Please return to: Freepost RLXS-XZGT-UGRJ, Haringey Council, Translation and Interpretation Services, 8th Floor, River Park House, 225 High Road, London N22 8HQ



Haringey Council uses recycled paper as part of its commitment to improving the environment.

Communications Unit | 6832 • 09/06

