

Take up Tennis



Haringey Tennis Development Plan 2010 to 2013

Credits

Haringey Council would like to formally recognise the contributions made by the following organisations in assisting us to produce the Tennis Development Plan.

The production of the Tennis Development Plan was the work of Siwan Stephens, the borough's Tennis Development Officer.

Key partners included the borough's tennis clubs, in particular Robby Sukhdeo of Pavilion Tennis, the Lawn Tennis Association, Tennis Foundation and Middlesex Lawn Tennis Association.

Introduction

1 Vision

2 Aims

3 Objectives and Outcomes

4 Strategic Context

5 Current tennis provision in Haringey

6 Summary

Introduction

Tennis is a growing sport in the borough with huge potential particularly in the east of the borough where provision for many years has been limited.

This ambitious plan aims to tap into the demand for tennis as well as introducing the game to people from a variety of backgrounds in order to grow the sport.

A continuing programme of improvements to tennis facilities and support for tennis programmes will help this process and ensure tennis continues to grow and become a sport which is played regularly by many Haringey residents.

Cllr Dilek Dogus
Cabinet Member for Adult and
Community Services



1 Vision

To promote and provide, both individually and in partnership, tennis activity and the facilities that sustain it, to meet the needs of all communities in Haringey.

2 Aims

- Increase participation
- Raising standards
- Developing better players
- Workforce development
- Facilities development



3 Objectives and Outcomes

Increase Participation: Increase participation in coaching and development programmes

- **Usage** – Increase overall participant numbers and throughput on Council run coaching programmes (12,000 throughput and 250 registrations)
- **Membership** – Increase levels of tennis club membership across the borough specifically focussing on: White Hart Lane TC, Pavilion Tennis, Highgate LTC and Coolhurst LTC (2,000)
- **British Tennis Membership** – Increase numbers of British Tennis members across the borough with particular focus on the east of the borough (100)
- **Awareness** – Run a number of Open Days, tournaments etc to raise the level of knowledge about tennis opportunities in the borough (minimum 3 per annum)

- **Adult Social League** – Introduce an adult social league structure to Haringey (minimum 30 participants)
- **Disability** – Introduce 20 new disabled players to the game each year
- **Schools** – Run a tennis outreach programme, with one term of tennis classes, in 20 schools per annum



Raising Standards:

- **Clubmark** - Increase the number of clubs with Clubmark status in the borough to four
- **Self Employed Coaches** - Ensure only Council approved tennis coaches are providing coaching in Haringey parks
- **Instruction** - All coaching programmes comply with LTA qualification and instructor/pupil ratios
- **Tennis Forum** – A body made up of representatives from local clubs and schools to be duly constituted which will report to the Club, Coach and Volunteer Sub Group of the Haringey Community Sport and Physical Activity Network (CSPAN) and will take forward tennis interests in the borough

Developing Better Players

- Coaching programmes comply with LTA guidance 'Winning Player Pathway'
- Under Represented Groups – Assist players from under represented groups into the game and to achieve standards required for performance at elite level
- Competition - Run a minimum of 4 junior and 2 adult tournaments per annum. Run one interschool competition per annum



Workforce Development:

- A database of local tennis coaches and their qualifications to be compiled and updated annually
- A coaching pathway in line with the LTA Coach Education Structure be developed
- Number of Level one coaches be increased by 10
- Number of Level two coaches be increased by 5
- Number of higher level coaches (Performance Coach, Club Coach etc) be increased by 5
- That each club have a minimum of one coach qualified as a 'Club Coach'



Facilities Development:

- Area Assembly facilities – Developing tennis facility clusters in each of the seven Area Assemblies in the borough, addressing in particular the quality of the courts and amenities such as toilets, social/shelter and storage areas. Where possible floodlighting to be installed
- Borough wide facilities – Using White Hart Lane Community Sports Centre as the focus for tennis development programmes of a borough wide nature
- Centres of excellence – Supporting White Hart Lane TC (east) and Highgate LTC (west) to become Centres of Excellence to provide an exit route for the most talented players in the borough. These clubs to be satellite clubs of the country's 'High Performance Centres'

4 The Strategic Context



The implications for tennis development in Haringey are as follows:

The Haringey Community Strategy

Tennis development will contribute to the Haringey Community Strategy priorities to create community cohesion, improve the life chances of young people and tackle health inequalities through increased physical activity.

The Haringey Sport and Physical Activity Strategy

Tennis can play a key role in improving opportunities to participate in sport and physical activity. The 'Area-Based Offer' and the proposed development programmes associated with it, will provide a framework for tennis facilities that will improve access to local opportunities

Inclusive and active

The Tennis Development Plan contains proposals to assist the overall targets to increase participation by disabled people in London by 1% per annum, in part by creating more inclusive mainstream sports clubs and also by improving physical access for disabled people to sports facilities

Blueprint for British Tennis

The plan identifies actions to assist the development of talented players:

- Getting the best coaches working with the best talent in the best facilities
- Providing the best technical and sports science support and advice in the most accessible way, to the right people when they need it
- Establishing a straightforward, high quality competitive framework that gives juniors the stimulus they need to get on, and stay on the winning pathway

5 Current Tennis Provision in Haringey

Strengths

- A good base for developing tennis further in west Haringey with 93 tennis courts: 60 within private clubs, 8 at Pavilion Tennis, 8 on public courts and 17 within secondary schools
- Although there are no private members tennis clubs in central or east Haringey, there are 27 public courts available
- There are a number of excellent existing tennis programmes such as a performance programme at Highgate Lawn Tennis Club and a Council led programme at White Hart Lane Tennis Club.
- Good schools programme operating in the east of the borough
- Commitment from all key partners (Tennis Clubs, Governing Bodies, leisure providers and School Sports Partnerships) to grow and improve tennis provision in the borough
- Recently resurfaced tennis facilities within many of the parks and schools including Finsbury Park, Fortismere Secondary School, White Hart Lane Tennis Club, Chestnuts Park and Albert Road Recreation Ground
- Borough has been named as a Tennis Hotspot by the Tennis Foundation



Weaknesses

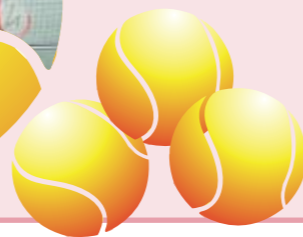
- The public courts at 7 of the 10 public facilities are in a poor condition
- White Hart Lane is the only tennis club in east Haringey
- Many schools have received no tennis coaching, particularly in central Haringey
- Little use is made of the 28 tennis courts or 43 indoor mini-courts (sports hall badminton courts) available at secondary schools
- Many school programmes lack a talent identification element to their programme
- Tennis clubs have no substantial links with public courts or schools
- All tennis clubs operate independently with little communication with each other
- Very few programmes in place for people with disabilities
- Lack of qualified coaches and head coaches to deliver the coaching programmes
- Coaching at public courts is underdeveloped and coaches at new tennis programmes complain of a lack of support, guidance and financial backing
- Very few school teachers have tennis playing experience or have acquired LTA coaching qualifications
- Lack of competitive opportunities for primary and secondary school tennis
- Generally public facilities lack shelter, nearby toilets and storage to support a coaching programme

Opportunities

- **Blueprint for British Tennis:** This strategy, developed in 2006, sets out the vision, direction and outline plans for the future of tennis in this country. The targets can be interpreted at local level and thus drive achievement
- **Tennis Foundation / Lawn Tennis Association:** The Foundation and the LTA have indicated that they will jointly provide £500,000 of funding for facility development in Haringey. The Foundation is also keen to broker relationships between the Council and private investors
- **Market segmentation data:** Sport England's market segmentation data identifies tennis as having a strong latent demand (after swimming, football and athletics). As well a number of market segments well represented in Haringey are more likely to participate in tennis than other sports.
- **Tennis appeals to women:** data illustrates that women do not participate in sport to the same level as men. However, tennis is popular amongst women and there is the opportunity to capitalise on this

Threats

- **Poor public facilities:** While the number of courts is relatively plentiful many are in a poor state thus discouraging use. As well the more popular sites are unsupervised with no booking system making it difficult at times for people to play
- **Moderate sports participation rates:** The Active People Survey revealed average rates of participation in sport and physical activity in the borough and that these rates are currently static compared to previous surveys. Thus increases in tennis participation will need to improve local trends



6 Summary

The developments proposed in Haringey have been devised by adopting the priorities identified in the Lawn Tennis Association's (LTA) and Tennis Foundation's (TF) strategy to the context of the borough and in so doing they:

- Reflect the priorities and targets in the LTA's Blueprint for British Tennis
- Build upon the objectives set out in other local, regional and national strategic policy documentation
- Take account of local circumstances in Haringey
- Address local deficiencies identified through the SWOT analysis of local provision
- Provide a framework within which investment decisions can be made



Shqip



Kjo fletushkë ju tregon mbi planet për të zhvilluar aktivitete tenisi/futbolli në Haringey. Për një kopje në gjuhën tuaj, plotësoni formularin dhe dërgojeni tek adresa e mëposhtme me postim falas.

Français



Ce livret explique les projets de développement d'activités de tennis/football à Haringey. Pour en recevoir un exemplaire dans votre langue, complétez le formulaire et renvoyez-le à l'adresse en port payé ci-dessous.

Kurdî Kurmancî



Ev belavok li ser planên pêşvebirina çalakîyên tenîs/fûtbolê li Haringey agahîyê dide. Heke hun kopîyeke bi zimanê xwe dixwazin, ji kerema xwe formê tije bikin û ji navnîşana posta bêpere ya jêrîn re bişînin.

Polski



Niniejsza publikacja informuje o planach rozszerzenia programu zajęć z piłki nożnej i tenisa na terenie Haringey. Aby otrzymać tekst publikacji w wersji polskiej należy wypełnić formularz i odesłać go bezpłatnie na podany poniżej adres.

Soomaali



Buug yarahani wuxuu kuu sheegayaa qorshayaasha ah in Haringey laga sameeyo nashaadyada kubbadaha tenis/kubbadda cagta. Si aad u hesho koobbi luqaddaada ku qoran, buuxi foomka oo ku soo celi cinwaanka boostiisu lacag la'aanta yahay ee hoose.

Türkçe



Bu kitapçık Haringey'de tenis/futbol etkinliklerini geliştirme planları hakkında bilgi sunmaktadır. Kitapçığın Türkçesini edinmek için formu doldurarak aşağıdaki ücretsiz posta adresine geri gönderin.

Please tell us if you would like a copy of this document in another language that is not listed above or in any of the following formats, and send the form to the Freepost address below.

- In large print On audio tape In Braille
- In another language, please state:



Name:

Tel:

Address:

Email:

Please return to: Freepost RLXS-XZGT-UGRJ, Haringey Council,
Translation and Interpretation Services, 8th Floor, River Park House, 225 High Road, London N22 8HQ

Haringey Council offers this translating and interpreting service to Haringey residents. We can translate this document into one language per resident ONLY.



This is printed on recycled paper. When you have finished with it, please recycle.

Published by Haringey Council's
Communications Unit 232.9 • 05/10