



12 | How we will deliver the outcomes

The Strategic Plan is accompanied by three year Implementation Plans for each outcome. The Implementation Plan sets out the detailed actions which will be carried out in order to achieve the long term objectives and priorities. The three year plans will roll forward each year which means that every year there will be a refreshed three year plan. The Implementation Plans are owned by the Children's Trust and include the contributions of all organisations delivering services for children and young people in Haringey.

Our aim is that services will, wherever possible, be delivered across a Children's Network area. They will be delivered in the community using multi disciplinary approaches. This means that services for children and young people will, where possible, be co-located and work together to provide a one stop shop approach.

The delivery of the CYPP and its success in making a difference to the life chances of children and young people will depend on the staff, volunteers and wider community participating in the implementation and delivery of services. It is their knowledge and skills coupled with the leadership and management of services that will make the difference. The CYPP provides a

framework for all who work to support children and young people in Haringey.

Accompanying the Children and Young People's Plan are workforce development plans which reflect the drive to create, develop and maintain a professionally qualified and highly skilled workforce. Fundamental to the strategy is the effective recruitment and retention of staff and widening pathways to develop common skills across the Children's Trust workforce.



Credits: Murad, 11 years old, Tiverton Primary School, 'Canoeing'



13 | Our spending plans

The Children's Trust is committed to delivering the priorities and outcomes in the CYPP and to ensuring that the available resources are directed to those priorities, and especially those areas of Haringey where the priorities are most challenging.

The financial resources available to deliver services for children and young people in Haringey come from:

- the mainstream resources of partners which are funded through Government and council tax; and
- some additional one-off grants, for example grants from Government to fund a particular programme or from external sources such as the Big Lottery.

The Haringey Strategic Partnership (HSP) has divided the funding the Government has placed under the heading of the Area Based Grant (ABG) between the HSP theme boards and in 2009-10, £11 million has been allocated to children and young people. However the ABG does not represent new or additional funding as the Government has created the ABG by placing existing funding streams, such as funding for the Connexions Service or the children's mental health service, under the ABG heading.

The resources in the ABG are intended to support the delivery of the priorities set out in the Local Area Agreement.



Credits: Casey, 7 years old, Alexandra Primary School

Partners in the Children's Trust have many existing statutory obligations, such as providing services for children in care or providing primary health care services. Currently partners individually, or in some cases jointly, commission and deliver services to meet these obligations from within their mainstream resources. In addition the Council provides staff to support the work of the Children's Trust, for example to organise and clerk the meetings.

In some instances specific pooled or joint funding arrangements already exist, such as arrangements for the work of the LSCB. The budget is funded by partners and covers the salaries of staff, recruitment of experts and associated support costs.

The JAR Action Plan, which forms a substantial part of the 'Stay safe' outcome, shows where, through a combination of additional or reprioritisation of existing resources, the activities agreed by all partners are being funded by each partner agency. In order to ensure the sustainability of the actions, agreed partners will need to ensure that the on-going implications of the plan are reflected and resourced as part of each partners' budget setting discussions.

The creation of the Children's Trust does not create new sources of funding. It is about making better use of the resources that we already have,

or working together in different ways, and will mean more integrated work and commissioning of services.

A Strategic Commissioning Group has been established to ensure that:

- All relevant funding is aligned to achieving the priorities in the plan
- All income streams are identified
- Where possible budgets are aligned or pooled
- New and additional sources of funding are used to have even greater impact



Every Child Matters

Credits: Emine, age 10, Tiverton Primary School



14

How we will monitor and evaluate outcomes

The Implementation Plan includes our Local Area Agreement targets relating to children and young people and other performance indicators which will be monitored and evaluated by the Executive Performance Management Group of the Children's Trust. A list is shown in Appendix 5. Progress will be monitored and evaluated by the Children's Trust and formally reported twice a year in the Spring and Autumn. The Needs Assessment and Consultation will be refreshed annually and will feed into the evaluation process. A progress report will also be prepared for children, young people and families.



Credits: Suelnir, age 10, Tiverton Primary School



Credits: Ridhwan, age 9, Tiverton Primary School



15

How we will deliver the outcomes

The Implementation Plan underpins the delivery of specific targets/actions within each of the ten priorities. National performance indicators have been identified for each priority area and will be used to measure our success.

Each Every Child Matters outcome has a lead officer responsible for overseeing that the actions are being progressed.

Performance management processes are in place to ensure the effective delivery of the priorities. Performance information and data is monitored by partner services on a monthly basis. There is quarterly scrutiny of performance data and reporting to the Children's Trust. This process will feed into services and enable agreed areas to be identified for additional actions.

Formal reporting on progress will take place after six months and will be reported to the Children's Trust. An annual review and refresh will be undertaken in July. The annual review will include the impact of previous actions and the inclusion of priorities to meet new areas of need.



Credits: Khastwar, 8 years old, Alexandra Primary School

The Children's Trust has established a Performance Monitoring Group who will be responsible for ensuring that the Children and Young People's Plan is delivering the priorities to meet the vision. A CYPP Steering Group has also been formed who are responsible for making sure the Plan is on track.

16 | Equality and diversity

All services are subject to equality standards and legislation, which provides an important framework to deliver equality of opportunity and promote community cohesion. Each of the ten priorities in the plan has been assessed using an Equality Impact Assessment (EIA). The findings from the EIA will be included in actions to improve equality of access to provision. A copy of the EIA is available at www.haringey.gov.uk/eia

The consultation process to develop the CYPP included a series of focus groups including with more vulnerable young people, parents, carers and voluntary sector organisations. It is intended to continue the dialogue with the focus groups through an annual consultation process.

There are specific actions in the Implementation Plan which reflect the need for further action to:

- Narrow the attainment gaps between pupils and their peers such as Looked After Children and those with special needs
- Increase the educational attainment of under-performing ethnic groups like Caribbean boys and Turkish pupils
- Narrow the gaps that exist in terms of health and life expectancy across the borough, for example, teenage pregnancy rates, sexual health, alcohol and drug misuse and obesity levels.



Credits: Ismahan, 8 years old, Alexandra Primary School



17 | Compact proofing

Every strategic plan which the HSP is committed to is subject to Compact proofing. This is a quality checking system which ensures that all plans conform to best practice in their preparation and meet certain standards. The CYPP has been successfully assessed against these standards.



Credits: Ina, age 11, Tiverton Primary School



Credits: Saba, aged 11



18 | Conclusion

The Children and Young People's Strategic Plan sets out the longer term vision for children and young people in Haringey and establishes ten priorities. The Implementation Plan details the actions to achieve the vision and provide a clear focus for all who work in this field. The Needs Assessment, Consultation and Evaluation of the current plan have provided an opportunity for us to take stock and agree the priorities for 2009-2020.

The Children's Trust would like to thank all who have contributed through their support, input and interest to the preparations for the new CYPP. We go forward in partnership working together for the children and young people of Haringey.



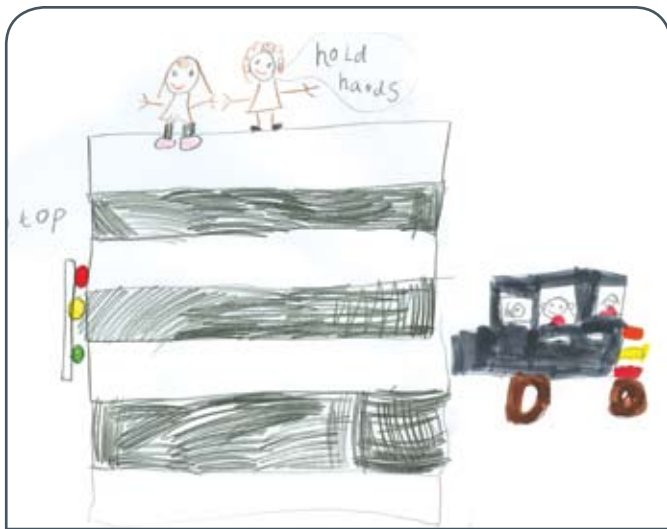
Credits: Erblin, age 8, Alexandra Primary School, 'The winners are the greens!'



Credits: Elisabeth, 8 years old, Alexandra Primary School



19 | Appendices



Credits: Jess, aged 5 and attends Rokesly Infant school, wants everyone to remember where it is safe to cross the road

Appendix 1

Relevant strategies, plans and programmes which cover the more detailed work of partners on the Children's Trust

Appendix 2

Links between the Sustainable Community Strategy, the Comprehensive Area Assessment and Children and Young People's Plan

Appendix 3

Membership of the Children's Trust

Appendix 4

Summary of the Needs Assessment by Children's Networks

Appendix 5

Every Child Matters Outcomes linked to key Local Area Agreement Indicators relating to children and young people



Credits: Farida, 9 years old, 'Every child matters'

Glossary of Terms

ABG	Area Based Grants
BSF	Building Schools for the Future
CAA	Comprehensive Area Assessment
CAF	Common Assessment Framework
CAGK	Communities Against Guns and Knives
CAMHS	Child and Adolescent Mental Health Services
CRB	Criminal Records Bureau
CT	Children's Trust
CYPP	Children and Young People's Plan
DCSF	Department for Children, Schools and Families
DH	Department of Health
ECM	Every Child Matters
EIA	Equality Impact Assessment
HSP	Haringey Strategic Partnership
JAR	Joint Area Review
LAC	Looked After Children
NEETs	Not in Education, Employment or Training
Ofsted	Office for Standards in Education
SCS	Sustainable Community Strategy
SEN	Special Educational Needs

The Common Assessment Framework

(CAF) is a national approach to standardising the referral and assessment of the needs of a child or young person, and deciding how those needs should be met.

Children's Centres provide a local network of services for children aged 0-5 and their families, including childcare and early education, family support and health services.

Children's Network is a geographical area of Haringey which is a focus for service provision. There are three Children's Networks – North, South and West.

Connexions is the name of the service providing high quality, impartial information, advice and guidance to young people, for example on future career plans.

Every Child Matters outcomes are the five national outcomes (Be Healthy, Stay Safe, Enjoy and Achieve, Make a Positive Contribution, Achieve Economic Well-Being) which provide a focus for all services for children and young people.

Extended Schools provide activities and facilities beyond the normal school day, for example after school clubs, breakfast clubs, childcare.

Multi-disciplinary teams are people from a range of different occupational groups working with children and coming together to focus their particular knowledge/experience and services on improving outcomes for a child/children.

Sustainable schooling in the context of this plan refers to the Capital Development Programmes like BSF which are intended to transform learning and include environmental aspects of sustainability.

Appendix 1

Relevant strategies, plans and programmes which inform and cover the more detailed work of partners on the Children's Trust

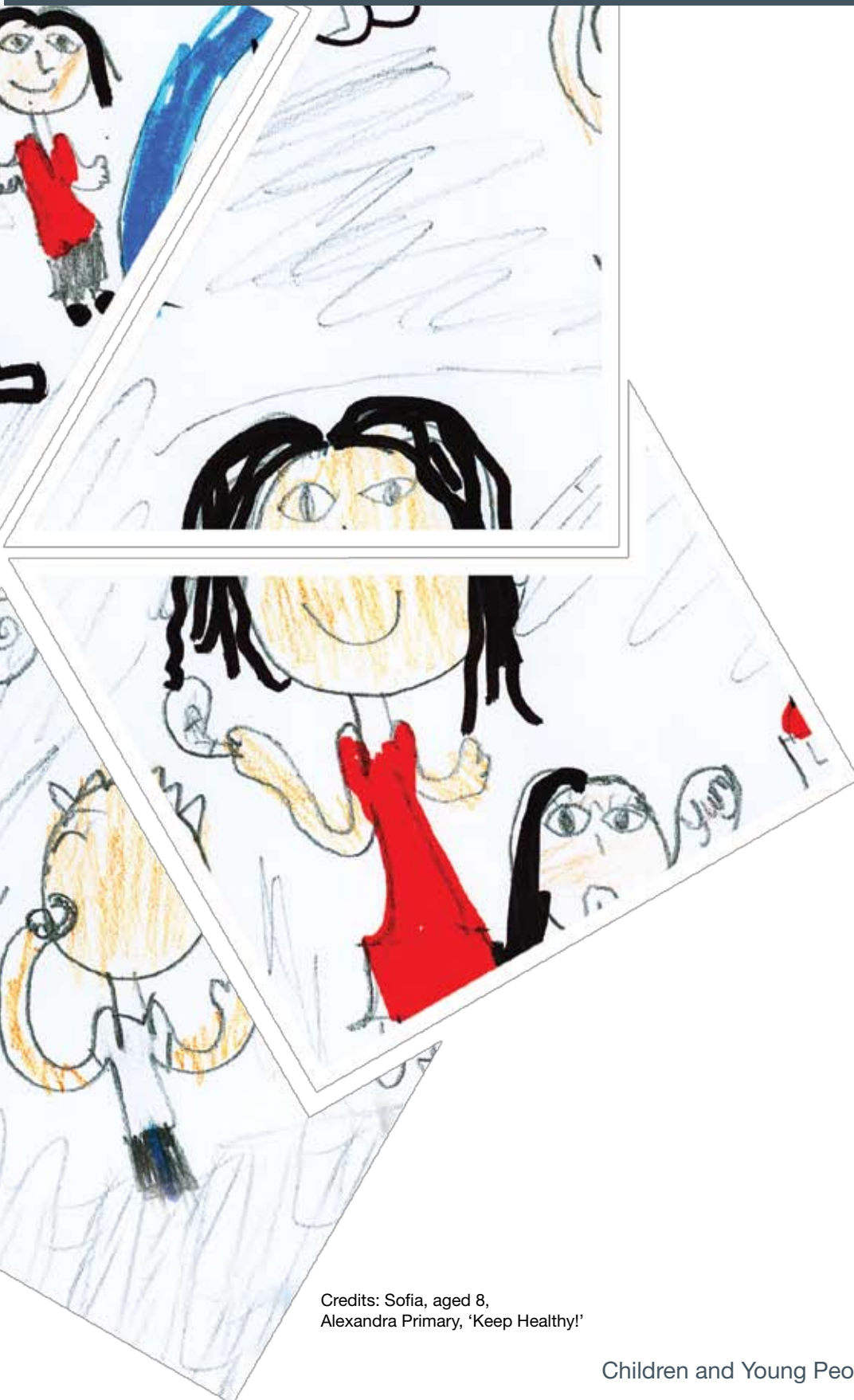
Outcomes	National Strategies, Plans and Guidance	Haringey delivery strategies
Be healthy	<ul style="list-style-type: none"> ■ NHS (2004) National Service Framework for Children, Young People and Maternity Services : The mental health and psychological well-being of children and young people ■ DH/DCSF (2004) Choosing Health – making Healthier Choices Easier ■ DH (2007) World Class Commissioning ■ DH (2007) Aiming High for Disabled Children ■ DH/DCSF (2008) Child Health Promotion Programme pregnancy and the first five years of life ■ DH (2008) Healthy Weight, Healthy Lives ■ DH The NHS Operating Framework 2009/11 ■ DCSF/DH (2009) Healthy Lives, Brighter Futures – the strategy for children and young people's health ■ DWP, DH, HSE, Scottish Executive and the Welsh Assembly, (2005) Health, Work and Well-being programme ■ NHS (2008) Change4life ■ (2008) Children and Young People in Mind: the final report of the national children and adolescent mental health services review 	<ul style="list-style-type: none"> ■ 2005 – 2008 Child and Adolescent Mental Health Strategy ■ 2005-2010 Sports and Physical Activity Strategy ■ 2007-2010 Infant Mortality Plan ■ 2007-2010 Obesity Strategy ■ 2008-2018 Greenest Borough Strategy ■ 2008 Healthy Schools Programme ■ 2009 Teenage Pregnancy Action Plan ■ 2009-2010 Young People's Substance Misuse Plan ■ 2009 Immunisation Action Plan ■ Sexual Health Strategy (in development)

Outcomes	National Strategies, Plans and Guidance	Haringey delivery strategies
Stay safe	<ul style="list-style-type: none"> ■ DCSF (March 2008) Care Matters: time to deliver for looked after children (Care Matters implementation) ■ DCSF (June 2008) Young Runaways Action Plan (consultation on new guidance) ■ Home Office (2008) Youth Crime Action Plan ■ DCSF (2008) Speaking Out Briefing No. 12 HM Government Youth Crime Action Plan ■ DCSF (2009) The Protection of Children in England: a progress report (The Lord Laming) 	<ul style="list-style-type: none"> ■ 2008-2011 Safer for All Strategy ■ 2008-2012 Domestic and Gender Based Violence Strategy ■ 2009 Think Family Strategy ■ 2009 JAR Action Plan ■ Anti social Behaviour Strategy (in development)
Enjoy and achieve	<ul style="list-style-type: none"> ■ National Strategies (Various dates) National Primary and Secondary Strategies guidance and information ■ DCSF (2007) Children Plan ■ DCSF (2007) Building Schools for the Future ■ DCSF (2008) Extra Mile Guidance ■ DCSF (2008) National guidance for schools in the National Challenge ■ DCSF (2008) Gaining Ground: Improving Progress in coasting secondary schools ■ DCSF (2008) National Guidance on Behaviour Partnerships, 'Back on Track' ■ DCSF (2008) Narrowing the Gap guidance ■ Bercow (2008) Review of services for children and young people with speech, language and communication needs ■ DCSF (2008) Better communication: an action plan to improve services for children and young people with speech, language and communication needs ■ DCSF (2008) The Play Strategy ■ DCSF (2009) Next Steps for Early Learning and Child Care – Building on the 10 year strategy. Ofsted (2009) Guidance on the new Ofsted inspection framework 	<ul style="list-style-type: none"> ■ 2005 Bright Futures – the secondary school strategy ■ 2006-2010 Play Strategy ■ 2007 Building Schools for the Future ■ 2008-2020 Primary (School) Strategy ■ 2009 Integrated Youth Support Strategy/Targeted Youth Support Strategy

Outcomes	National Strategies, Plans and Guidance	Haringey delivery strategies
Make a positive contribution	<ul style="list-style-type: none"> ■ DCSF (July 2007) Aiming high for young people – a ten year strategy for positive activities 	<ul style="list-style-type: none"> ■ 2008-2018 Greenest Borough Strategy ■ 2009 Community Engagement Framework ■ Participation strategy for children and young people (in development) ■ Volunteering Development Plan (in development)
Achieve economic well-being	<ul style="list-style-type: none"> ■ DCSF (2005) Youth Matters ■ DCSF (2006) Youth Matters: Next Steps ■ DCSF (2007) Quality Standards for Young People's Information, Advice and Guidance ■ London Child Poverty Commission report ■ Dept. of Work and Pensions (2007) Child Poverty Strategy - Ending Child Poverty ■ Everyone's Business Treasury, March 2008 ■ DCSF (2007) Government's Parenting Strategy – Putting Parents in Control ■ Ministerial Working Group on Child Poverty (2008) London's Children: Our Future capital 	<ul style="list-style-type: none"> ■ 2006 Haringey Guarantee on Worklessness ■ 2008-2011 Child Poverty Strategy ■ 2008-2011 Homelessness Strategy ■ 2008-2016 Regeneration Strategy: People, Places and Prosperity ■ 2009-2019 Affordable Warmth Strategy ■ 2009-2019 Housing Strategy

Appendix 2

(overleaf)



Credits: Sofia, aged 8,
Alexandra Primary, 'Keep Healthy!'

Appendix 2

Links between the Sustainable Community Strategy, the Comprehensive Area Assessment and the Children and Young People's Plan

Sustainable Community Strategy outcomes	People at the heart of change	An environmentally sustainable future	Economic vitality and prosperity shared by all
Sustainable Community Strategy priorities	<ul style="list-style-type: none"> • Enhance community cohesion • Meet housing demand • Provide a better, cleaner public realm & built environment • Provide award winning parks and open spaces • Provide even better shopping & cultural & leisure opportunities 	<ul style="list-style-type: none"> • Encourage our future citizens to be our first 'green generation' 	<ul style="list-style-type: none"> • Reduce worklessness • Increase skills and educational achievement • Increase sustainable economic activity • Maximise income • Address child poverty
Priorities identified in CAA self evaluation	Improve housing	Making Haringey one of the greenest boroughs in London	Respond to the recession and tackle worklessness
CYPP Outcomes	Make a Positive Contribution / Enjoy and Achieve	Make a Positive Contribution	Enjoy & Achieve / Achieve Economic Wellbeing
CYPP priorities	<ol style="list-style-type: none"> 5. Develop sustainable schooling and services with high expectations of young people 6. Engender lifelong learning for all across a broad range of areas both in and out of school 7. Give young people a greater stake in their future and pride in their local community 8. Develop global citizens 	<ol style="list-style-type: none"> 7. Give young people a greater stake in their future and pride in their local community 8. Develop global citizens 	<ol style="list-style-type: none"> 5. Develop sustainable schooling and services with high expectations of young people 6. Engender lifelong learning for all across a broad range of areas both in and out of school 9. Provide a greater range of curriculum provision, opportunities and choice 10. Empower families and communities

Sustainable Community Strategy outcomes	Safer for all	Healthier people with a better quality of life	People and customer focused
Sustainable Community Strategy priorities	<ul style="list-style-type: none"> Reduce the incidence and fear of crime Address anti-social behaviour Create safe and secure homes, and tackle domestic violence Create a positive future for our children and young people Safeguard children and adults from abuse and neglect wherever possible and deal with it appropriately and effectively if it does occur 	<ul style="list-style-type: none"> Tackle health inequalities Improve life expectancy Give greater opportunities to live a healthier lifestyle Give babies, children and young people the best possible start in life 	<ul style="list-style-type: none"> Deliver high quality, needs based and customer focused services that offer value for money Increase resident satisfaction with services and the area they live in Provide greater opportunity for civic engagement and participation Make our children and young people active citizens
CAA priorities	Improve safeguarding of children	Tackle health inequalities	Enhance community engagement and partnership working
CYPP Outcomes	Stay Safe	Be Healthy	Make a Positive Contribution
CYPP priorities	<ol style="list-style-type: none"> 3. Improve safeguarding and child protection 4. Develop positive human relationships and ensure personal safety 	<ol style="list-style-type: none"> 1. Improve health and well-being throughout life 2. Improve the sexual health of young people 	<ol style="list-style-type: none"> 7. Give young people a greater stake in their future and pride in their local community



Credits: Sofia, aged 8, Alexandra Primary, 'Keep Healthy!'

Appendix 3

The membership of the Haringey Children's Trust Board comprises the following partner agencies with the representatives as indicated:

- | | |
|---|--|
| <p>(i) 4 +1 ex officio Members of Haringey Council i.e.</p> <ul style="list-style-type: none"> ■ the Cabinet Member for Children and Young People's Services ■ the Leader of the Council (ex officio) ■ the Cabinet Member for Safer Communities and Enforcement ■ a Majority Group Councillor ■ a Minority Group Councillor | <p>(ix) 2 representatives of Great Ormond Street Hospital</p> <ul style="list-style-type: none"> ■ Partnership Director of Operations ■ 1 non executive director |
| <p>(ii) 3 officers of Haringey Council i.e.</p> <ul style="list-style-type: none"> ■ the Chief Executive ■ the Director of Children and Young People's Services ■ the Head of Safer and Stronger Communities (for the Youth Offending Service) | <p>(x) General Practitioner representative</p> <p>(xi) 3 representatives of the Haringey Voluntary Sector via Community Link</p> <p>Xii 1 representative of HAVCO</p> <p>(xiii) College of North East London – Principal</p> <p>(xiv) Learning and Skills Council – Chief Executive</p> <p>(xv) 3 chairs of the Area Children Partnerships</p> |
| <p>(iii) The Chair of the Local Safeguarding Children Board</p> | <p>(xvi) 2 nominations from the Haringey Youth Council</p> <p>(xvii) 3 representatives of Haringey Schools –
1 x primary, 1 x secondary &
1 x special</p> <p>(xviii) 1 representative of the Sixth Form College</p> |
| <p>(iv) 3 representatives of NHS Haringey i.e.</p> <ul style="list-style-type: none"> ■ the Chief Executive ■ the Executive Director ■ 1 non-executive Director | <p>(xix) 1 representative of Job Centre Plus.</p> |
| <p>(v) Haringey Police – the Borough Commander</p> | |
| <p>(vi) Mental Health Trust – Chief Executive/Director of CAMHS</p> | |
| <p>(vii) Whittington Hospital – Chair of Trust/Chief Executive</p> | |
| <p>(viii) North Middlesex Hospital - Chair of Trust/Chief Executive</p> | |

Appendix 4

Summary of the Needs Assessment by Children's Network

Be Healthy

North Children's Network

- Health deprivation and disability – Nearly 8% fall into the 10% most deprived in the country. Most of this falls in the Northumberland Park ward.
- Low birth weight babies – Between 2005 and 2007, 9.6% of all babies born in the North network area were low birth weight. The highest proportion came from the Northumberland Park ward (11.2%).
- Obesity (reception year) – In 2008, 12.5% of all reception year students living in the North network were classified as obese. This has decreased 3.1% since 2007. The highest proportion came from the Noel Park Ward (17%).
- Obesity (year 6) – In 2008, 26.4% of all year 6 children living in the North network were classified as obese. This has decreased by 1.8% since 2007. The highest proportion came from the Bounds Green ward (29.8%).
- Teenage Pregnancy – The teenage pregnancy rate is 82.6 per 1000 of the population. The ward with the highest rate is Bounds Green (107.1 per 1000).
- Young people have high elective admissions and high levels of respiratory conditions in Woodside and Noel Park.
- Additional needs (aged 18 – 25 years old) - 34.3% of all young people with additional mental health needs; 38.4% of young people

with additional learning disabilities and 33.3% of young people with physical and sensory disability and frailty live in the North network area.

West Children's Network

- Health deprivation and disability – 2% fall into the 10% most deprived in the country. This is one super output area that is in the Hornsey ward.
- Low birth weight babies – Between 2005 and 2007, 6.4% of all babies born in the West network area were low birth weight. The highest proportion came from the Fortis Green ward (7.9%).
- Obesity (reception year) – In 2008, 7.2% of all reception year students living in the West network were classified as obese. This has decreased 2% since 2007. The highest proportion came from the Hornsey Ward (13.2%).
- Obesity (year 6) – In 2008, 16.1% of all year 6 children living in the West network were classified as obese. This has decreased by 2.8% since 2007. The highest proportion came from the Hornsey ward (20.2%).
- Teenage Pregnancy – The teenage pregnancy rate is 39.7 per 1000 of the population. The ward with the highest rate is Hornsey (66.8 per 1000).
- Additional needs (aged 18 – 25 years old) - 25% of all young people with additional mental health needs; 11.6% of young people

with additional learning disabilities and 9.1% of young people with physical and sensory disability and frailty live in the West network area.

South Children's Network

- Health deprivation and disability – Nearly 4% fall into the 10% most deprived in the country. These are two small areas of Bruce Grove and Tottenham Green.
- Low birth weight babies – Between 2005 and 2007, 8.3% of all babies born in the South network area were low birth weight. The highest proportion came from the West Green ward (10.6%).
- Obesity (reception year) – In 2008, 12.4% of all reception year students living in the South network were classified as obese. This has decreased 2% since 2007. The highest proportion came from the Tottenham Hale Ward (17.3%).
- Obesity (year 6) – In 2008, 28.2% of all year 6 children living in the South network were classified as obese. This has decreased by 1.7% since 2007. The highest proportion came from the Tottenham Hale ward (33.2%).
- Teenage Pregnancy – The teenage pregnancy rate is 94.3 per 1000 of the population. The ward with the highest rate is Bruce Grove (131.6 per 1000).
- Additional needs (aged 18 – 25 years old) - 40.6% of all young people with additional mental health needs, 50% of young people with additional learning disabilities and 57.6% of young people with physical and sensory disability and frailty live in the South network area.

Stay Safe

North Children's Network

- Crime: there are hotspots of youth crime in Noel Park and Northumberland Park (April

2008-February 2009).

- YOS clients: 32.4% of Youth Offending Service clients live in the North Network.
- Children in care: 43% of children in care live in the North network.
- Child protection plan: 37% of children subject to a child protection plan live in the North Network.
- Child protection register: 68 children living in the North were on the child protection register as at March 2008.

South Children's Network

- Crime: there are hotspots of youth crime in West Green, Bruce Grove, Tottenham Hale and Seven Sisters.
- YOS clients: 51.5% of Youth Offending Service clients live in the South, 3.6% live in Tottenham Hale.
- The highest concentration of YOS clients (over 30%) reside in White Hart Lane, Seven Sisters and Tottenham Hale wards.
- 57% of the YOS caseload reside in Tottenham postcodes N17 and N15.
- Children in care: 40% of children in care live in the South network.
- Child protection plan: 35.3% of children subject to a child protection plan live in the South network area.
- Child protection register: 108 children living in the South were on the child protection register as at March 2008.

West Children's Network

- Crime: there are hotspots of youth crime in Alexandra, Muswell Hill, Hornsey and Crouch End.
- YOS clients: 18.9% of Youth Offending Service clients live in the West, the least number of YOS clients are in Highgate, Fortis Green and Alexandra.
- Children in care: 14% of children in care live in the West network.
- Child protection plan: 15% of children subject

to a child protection plan live in the West network area.

- Child protection register: 35 children living in the West were on the child protection register as at March 2008.

Enjoy and Achieve

North Children's Network

- Foundation Stage - 35% achieving at least 78 points and 6+ in all Personal, Social and Emotional Development (PSE) and Communication, Language and Literacy (CLL).
- KS 1 - 79% of children achieved Reading Level 2+; 46% achieved Writing level 2B+. Similar to the attainment levels in the South network, although significantly below the West network.
- KS 2 – 71% English level 4+; 20% English level 5+; 20% maths level 5+; 27% Science level 5+. Similar to the attainment levels in the South network, although significantly below the West network.
- KS 4 - 53% achieving 5+ A*-C; 34% achieving 5+ A*-C including English and maths.

South Children's Network

- Foundation Stage - 37% achieving at least 78 points and 6+ in all PSE and CLL scales.
- KS 1 - 76% of children achieved Reading Level 2+; 44% achieved Writing level 2B+. Similar to the attainment levels in the North network, although significantly below the West network.
- KS 2 – 68% English level 4+; 18% English level 5+; 17% Maths level 5+; 27% Science level 5+. Similar to the attainment levels in the North network, although significantly below the West network.
- KS 4 - 58% achieving 5+ A*-C; 37% achieving 5+ A*-C including English and maths.

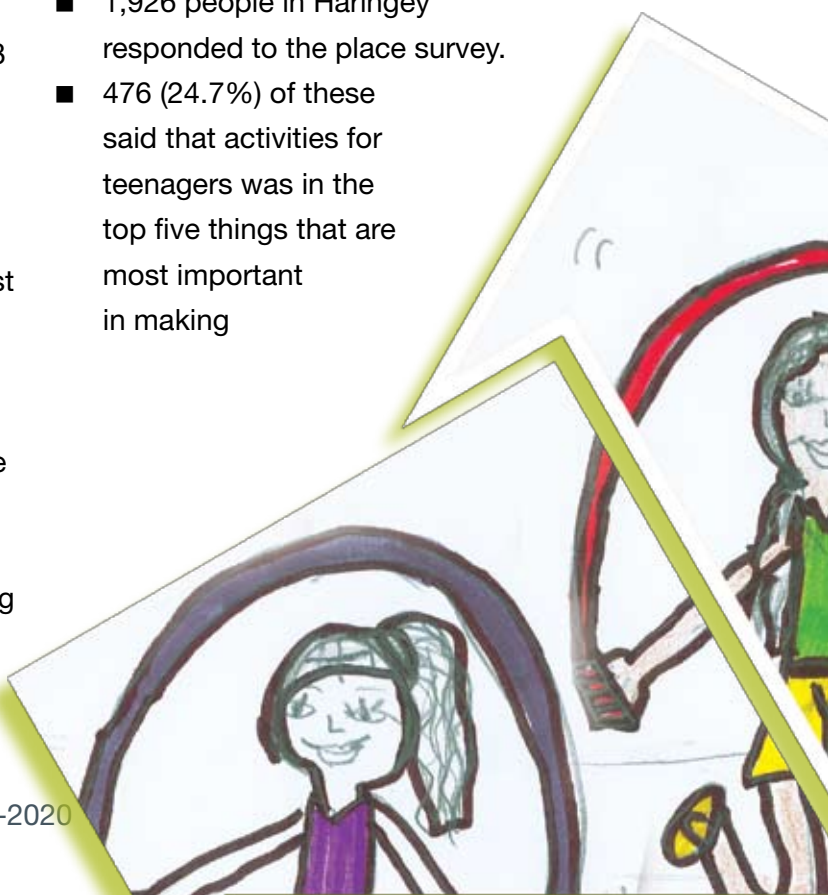
West Children's Network

- Foundation Stage - results in the West are significantly better than results in the North and South networks. The percentage achieving at least 78 points and 6+ in all PSE and CLL scales was 55%, a gap of between 20-22% points.
- KS 1 - the West outperforms the North and South networks in all areas. 90% of children achieved Reading Level 2+; 70% achieved Writing level 2B+.
- KS 2 – Significantly outperforms the North and South networks in all areas. 89% English level 4+; 45% English level 5+; 43% Maths level 5+; 58% Science level 5+.
- KS 4 - the West outperforms the North and South networks with 69% achieving 5+ A*-C. However, this ranges from 55% in Stroud Green to 87% in Alexandra ward.
- The West also outperforms the other networks 58% achieving 5+ A*-C (including English and maths). However, this ranges from 42% in Stroud Green to 79% in Alexandra ward.

Make a positive contribution

Haringey's top five for improvements:

- 1,926 people in Haringey responded to the place survey.
- 476 (24.7%) of these said that activities for teenagers was in the top five things that are most important in making



somewhere a good place to live.

- 51 (10.7%) of these said that facilities for young children was in the top five things that are most important in making somewhere a good place to live.
- 123 (25.8%) of these said that activities for teenagers was in the top five things that most need improving in the local area.
- 68 (14.3%) of these said that facilities for young children was in the top five things that most need improving in the local area.

North Children's Network

- 477 people in the North children's network responded to the place survey.
- 75 (15.7%) of these said that activities for teenagers was in the top five things that are most important in making somewhere a good place to live.
- 51 (10.7%) of these said that facilities for young children was in the top five things that are most important in making somewhere a good place to live.
- 123 (25.8%) of these said that activities for teenagers was in the top five things that most need improving in the local area.
- 68 (14.3%) of these said that facilities for young children was in the top five things that most need improving in the local area.

South Children's Network



Credits: Shania, age 8, Alexandra Primary School

- 669 people in the North children's network responded to the place survey.
- 113 (16.9%) of these said that activities for teenagers was in the top five things that are most important in making somewhere a good place to live.
- 83 (12.4%) of these said that facilities for young children was in the top five things that are most important in making somewhere a good place to live.
- 161 (24.1%) of these said that activities for teenagers was in the top five things that most need improving in the local area.
- 79 (11.8%) of these said that facilities for young children was in the top 5 things that most need improving in the local area.

West Children's Network

- 780 people in the North children's network responded to the place survey.
- 87 (11.2%) of these said that activities for teenagers was in the top five things that are most important in making somewhere a good place to live.
- 69 (8.9%) of these said that facilities for young children was in the top five things that are most important in making somewhere a good place to live.
- 240 (30.8%) of these said that activities for teenagers was in the top five things that most need improving in the local area.
- 53 (6.8%) of these said that facilities for young children was in the top five things that most need improving in the local area.

Achieve Economic Wellbeing

North Children's Network

- Income deprivation affecting children - Nearly 90% fall into the 10% most deprived in the country. The areas that don't fall into this are in the Bounds Green Ward.
- Employment deprivation - Nearly 36% fall into

the 10% most deprived in the country. Lots of this is in the Northumberland Park ward which has the highest unemployment rate in London.

- Barriers to housing and services - 5% fall into the 10% most deprived in the country. This constitutes two super output areas. One in White Hart Lane and one in Northumberland Park.
- Living environment - 23% fall into the 10% most deprived in the country. These areas are spread across Northumberland Park, Woodside and Bounds Green wards.
- Lone parents claiming income support as at August 2008 – 2480 people, 38.4%.
- Child poverty - 45.9% of the children live in poverty according to the National Indicator 116 definition. Northumberland Park is the ward with the highest proportion (50.6%).
- NEETS - Nearly 34% of all Haringey NEETS are in the North network. 8% of all Haringey NEETS are in the White Hart Lane ward.
- Children living in temporary accommodation – 1,654 children live in the North network. This is 31.2% of all the Haringey children living in temporary accommodation. The ward with the highest amount is Woodside (460).

South Children's Network

- Income deprivation affecting children - 75% fall into the 10% most deprived in the country. This features across the whole network, but least in the Harringay and West Green wards.
- Employment deprivation - 25% fall into the 10% most deprived in the country. This is mainly situated in the Tottenham Green and Tottenham Hale wards.
- Barriers to housing and services - 5% fall into the 10% most deprived in the country. This is three super output areas in West Green, Tottenham Hale and Tottenham Green.
- Living environment - Over 30% fall into the 10% most deprived in the country. This is spread quite evenly across the network.
- Lone parents claiming income support as at

August 2008 – 3,025 people, 46.9%.

- Child poverty - 41.5% of the children live in poverty according to the National Indicator 116 definition. Tottenham Hale has the highest proportion (47.7%).
- NEETS - 45% of all Haringey NEETS are in the South network. 8.8% of all Haringey NEETS are in the Bruce Grove ward.
- Children living in temporary accommodation – 2506 children live in the South network. This is 47.3% of all the Haringey children living in temporary accommodation. The ward with the highest amount is Bruce Grove (485).

West Children's Network

- Income deprivation affecting children – 10% fall into the 10% most deprived in the country. This is mainly situated in a small part of the Hornsey ward.
- Employment deprivation - 2% fall into the 10% most deprived in the country. This is just one super output area in the Hornsey ward.
- Barriers to housing and services - 2% fall into the 10% most deprived in the country. This is just one super output area in the Alexandra ward.
- Living environment - 22.5% fall into the 10% most deprived in the country. This is spread quite evenly across the network.
- Lone parents claiming income support as at August 2008 – 945 people, 14.7%.
- Child poverty - 17.6% of the children live in poverty according to the National Indicator 116 definition. Hornsey is the ward with the highest proportion (34.1%).
- NEETS - 21% of all Haringey NEETS are in the West network. 5.8% of the all Haringey NEETS are in the Hornsey ward.
- Children living in temporary accommodation – In 2008, 566 children living in the West network were in temporary accommodation. This is 10.7% of all the Haringey children living in temporary accommodation. The ward with the highest amount was Hornsey (209).

Appendix 5

Every Child Matters Outcomes linked to Local Area Agreement Indicators for children and young people

Outcome	Key LAA Indicators relating to children and young people 2009-2011
<p>Be Healthy</p>	<ul style="list-style-type: none"> ■ NI 50 Emotional health of children ■ NI 51 Effectiveness of Child and Adolescent Mental Health Service (CAMHS) services ■ NI 56 Obesity among primary school age children in Year 6 ■ NI 112 Under 18 conception rate ■ NI 113 Prevalence of Chlamydia in under 25 years olds ■ NI 126 Early access for women to maternity services ■ NI 53 Prevalence of breastfeeding at 6-8 weeks from birth (Local) ■ Local - Increase the % of children immunised by the 2nd birthday ■ Local - Number of schools achieving healthy schools status (2007-2010 stretch target) ■ Local - Victim support services for children and young people (aged 11-19 years)
<p>Stay Safe</p>	<ul style="list-style-type: none"> ■ NI 59 % of initial assessments for children's social care carried out within seven working days of referral ■ NI 60 % of core assessments for children's social care that were carried out within 35 working days of their commencement ■ NI 62 Stability of placements of looked after children, number of moves (Local) ■ NI 66 Looked after children cases which were reviewed within required timescales (Local) ■ NI 67 % of child protection cases which were reviewed within required timescales (Local) ■ NI 111 First time entrants to the Youth Justice System aged 10-17

Outcome	Key LAA Indicators relating to children and young people 2009-2011
Enjoy and Achieve	<ul style="list-style-type: none"> ■ NI 72 - Achievement of at least 78 points across the Early Years Foundation Stage with at least six in each of the scales in Personal, Social and Emotional Development and Communication, Language and Literacy PSA 10 ■ NI 73 Achievement at level 4 or above in both English and Maths at Key Stage 2 (Threshold) PSA 10 ■ NI 75 Achievement of five or more A*-C grades at GCSE or equivalent including English and Maths (Threshold) PSA 10 ■ NI 87 Secondary school persistent absence rate ■ NI 92 Narrowing the gap between the lowest achieving 20% in the Early Years Foundation Stage Profile and the rest PSA 11 ■ NI 93 Progression by 2 levels in English between Key Stage 1 and Key Stage 2 ■ NI 94 Progression by 2 levels in Maths between Key Stage 1 and Key Stage 2 ■ NI 99 Children in Care reaching level 4 in English at Key Stage 2 PSA 11 ■ NI 100 Children in Care reaching level 4 in Maths at Key Stage 2 PSA 11 ■ NI 101 Children in care achieving 5 A*-C GCSEs (or equivalent) at Key Stage 4 (including English and Maths) PSA11
Make a positive contribution	<ul style="list-style-type: none"> ■ NI 4 % of people who feel that they can influence decisions in their locality ■ NI 6 Participation in regular volunteering ■ NI 79 Achievement of level two qualifications by age 19 (2007-2010 stretch target) ■ NI 7 Environment for a thriving third sector (Local)
Achieve Economic well-being	<ul style="list-style-type: none"> ■ NI 116 Proportion of children in poverty ■ NI 117 16 to 18 year olds not in education, training or employment (NEET) (2007-2010 stretch) ■ NI 198 Children travelling to school - mode of transport usually used (by car) (Local)

