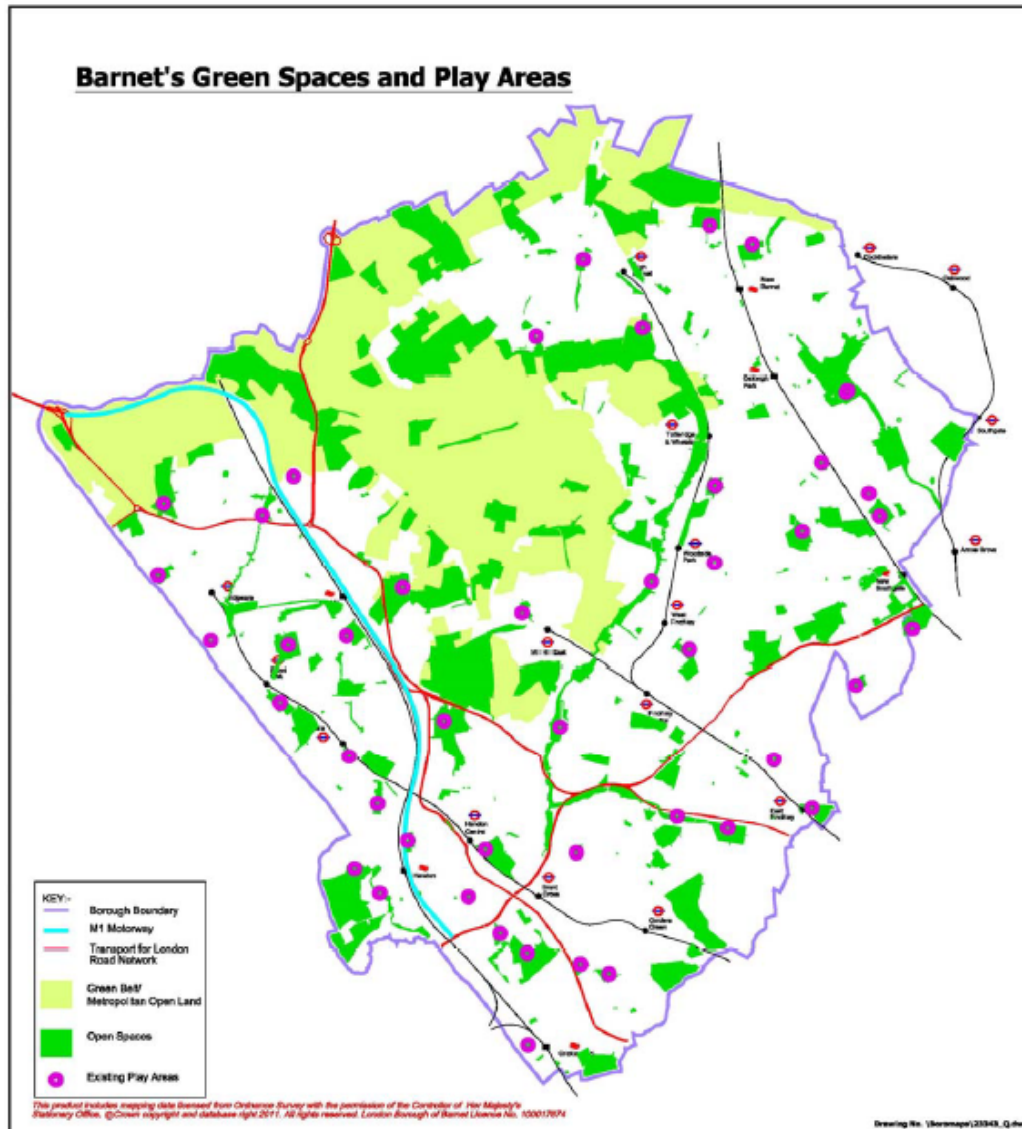


## APPENDIX 9

### Core Strategy Submission Stage

in Map 11. The Assessment identified 49 sites in the borough that provide formal play space for children, this equates to 0.5m<sup>2</sup> of space per child under 15 years.

Map 11 – Barnet's green spaces and play areas



- 12.4.2 Less than half of the parks in Barnet have play provision for children. Overall 54% of Barnet's area is not within 600m of formal equipped areas for play and a significant increase in facilities is required as Barnet's population gets younger. The Assessment highlighted the need to improve access through public rights of way to play areas at Deansbrook Play Area, Fairway Children's Playground and Edgwarebury Park. It also identified 15 open spaces in areas with deficiency that have potential to provide play equipment