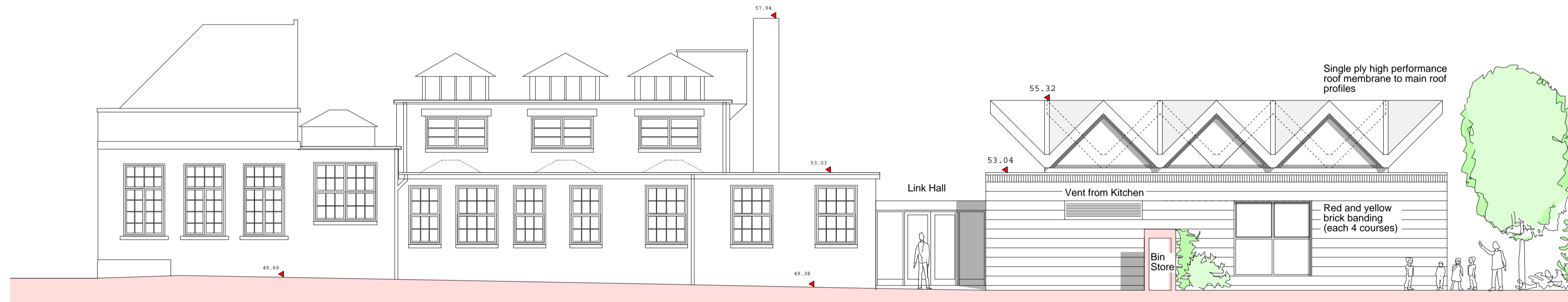


CROSS SECTION THRU LIBRARY & HALL

Existing Library

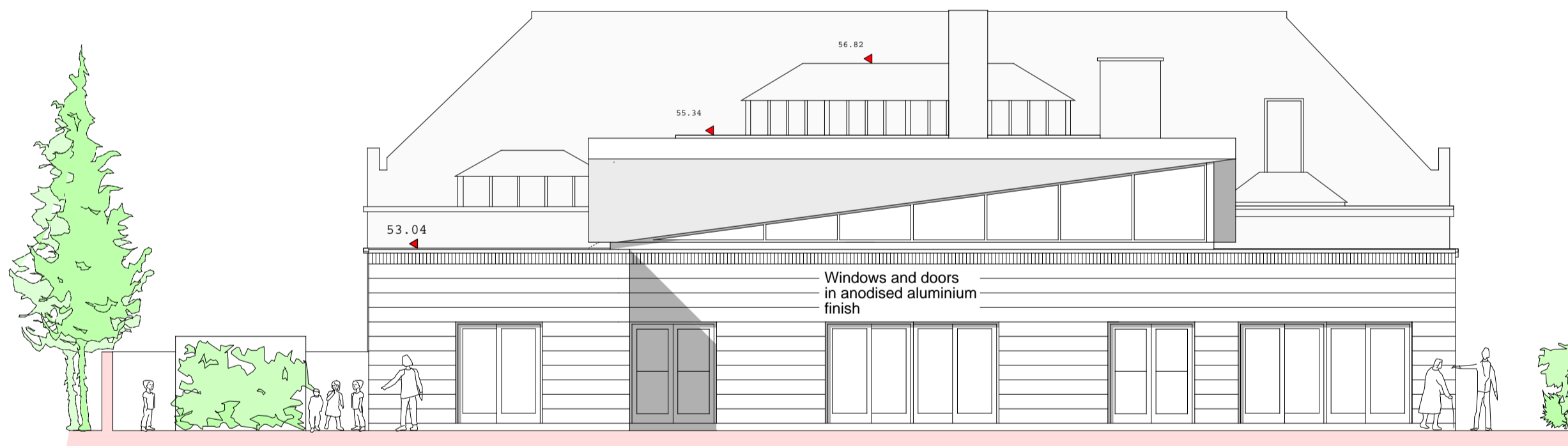
Proposed Library Hall



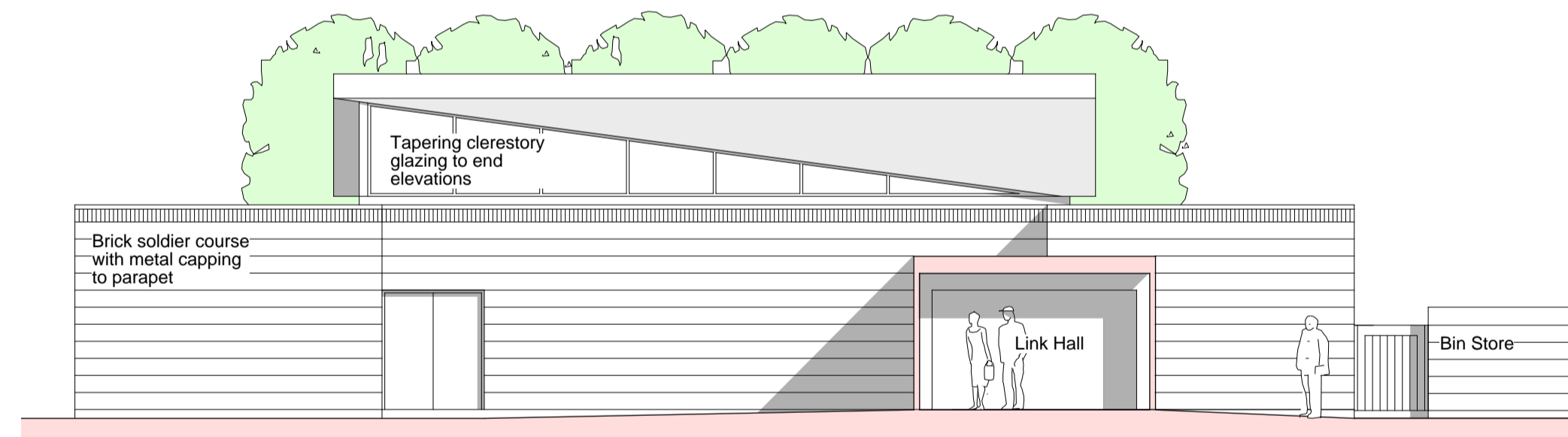
SOUTH ELEVATION OF LIBRARY & HALL

Existing Library

Proposed Library Hall



EAST ELEVATION OF HALL



WEST ELEVATION OF HALL

**ST ANN'S LIBRARY HALL REDEVELOPMENT**  
 Sections + Elevations, May 2007  
 DRG: STA/021

**John Miller + Partners with Sidell Gibson**  
 Architects

