


# Welcome to Priory Park Heritage Trail: Board 4

This is the final of four boards forming the Priory Park Heritage Trail. The boards are placed at various locations, highlighting aspects of the Park's history.



**Become a Time Detective.**  
To answer the questions on each board you will have to read the text and look for clues all around you.

### Kids Fact File

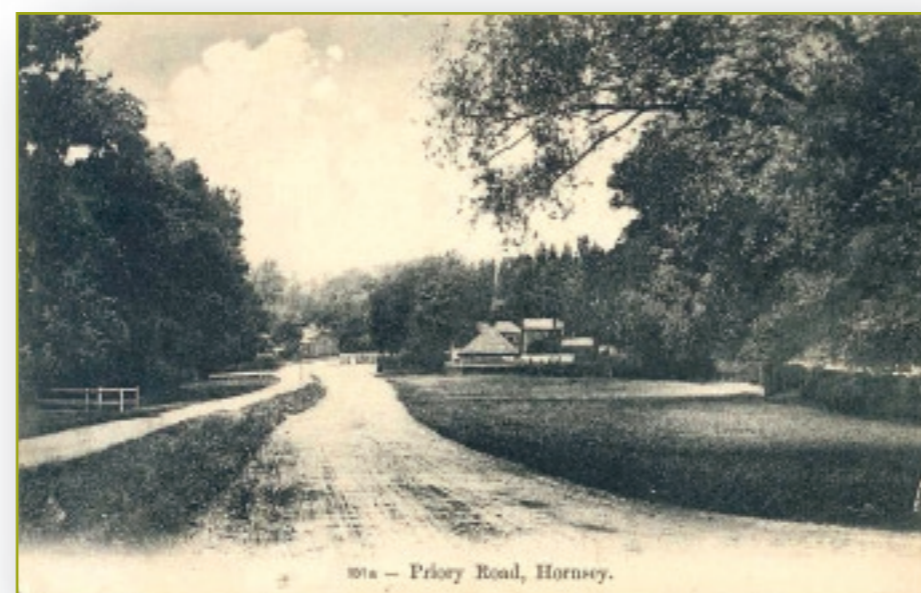
Did you know that Priory Park used to be farmland and fields?

Alexandra Palace and fields ▼



Before Hornsey and Crouch End became busy towns, and there were no cars and far fewer shops, people used to travel by horse and cart. They would keep animals for food and clothing. You might have been standing in a field with sheep and cows over 100 years ago!

Priory Road ►



### Regulations

This Park was first made into a public place for ordinary people to enjoy in 1896 – over 100 years ago – many years before your mummies and daddies were born! Things were very different then and here are some of the rules that show us how differently park space was used.

#### Any person entering Middle Lane Pleasure Grounds shall not:



Bring any cattle, sheep, goats and pigs into the grounds



Bathe, wade, or wash in the ornamental lake, pond, stream or other water



Beat, shake, sweep, brush or cleanse any carpet, drugget, rug or mat



Hang spread or deposit any linen for drying or bleaching

### Celebrations

Many celebrations have taken place in Priory Park over the years. In the 1930s it was used for the Jubilee celebrations of King George V (1935) and the coronation celebrations of King George VI in 1936.

Flowerbeds c1937 ▼



### Contemplations

To your left is the Philosophers Garden, a spot for peace and quiet. This corner of the park is named after The Priory Park Philosophers, a club for retired elderly men who used the old bandstand in the park for 'casual conversation during fine weather'.


Bandstand ▼



### Temptations

There has been a café in Priory Park for many years. Now known as the Funyum Café, it used to be called the Festival Tearooms, probably named after the Festival of Britain in 1951. The café remains a popular attraction today and the paddling pool at the front of the café has entertained generations of local children.

Tearooms ▼

**Time Detectives**

Can you find the list of byelaws pinned to a hut in the park?

Can you find the Green Flag in Priory Park?

What is the café called now? Is there still a paddling pool there?

### Getting Involved

Community involvement is a key aspect of achieving and maintaining high standards within Haringey's parks and open spaces and we welcome your involvement. To find out how you can get more involved with the Friends of Priory Park or to take part in volunteer workdays with conservation charity BTCV, contact Parks Customer Care on 020 8489 5662 or email [parkscustomer@haringey.gov.uk](mailto:parkscustomer@haringey.gov.uk)

### Parks Constabulary

To report incidences of crime or anti-social behaviour in a Haringey park or open space please call the 24 hour incident line on 020 8211 1923.