

The Planning & Regeneration Newsletter



November 2010

What's in this Issue?

Page 1
Green Buildings

Page 2
Renewable Energy

Page 3
Walking, Cycling & Public Transport

Page 4
Minimising waste, Water Use & Pollution

Page 5, 6 & 7
Strategic Plans to go Green

Page 8
Business Plan

Page 9
Customer Satisfaction: What you said about us!

Editor: Rachel Parr

We are always seeking ways to improve the information we provide to you, if you have a particular area of interest or a suggestion for what you would like to see in the next edition of the newsletter (due in Dec/ Jan) please do not hesitate to contact me. Many Thanks

Haringey Council
639 High Road
N17 8BD

Tel: 020 8489 5277

rachel.parr@haringey.gov.uk

Haringey Goes Green!

Residents, businesses & developers are being urged to have their say on the draft Sustainable Design & Construction Supplementary Planning Document (SPD), which re-affirms the council's commitment to reducing CO2 emissions & tackling climate change.

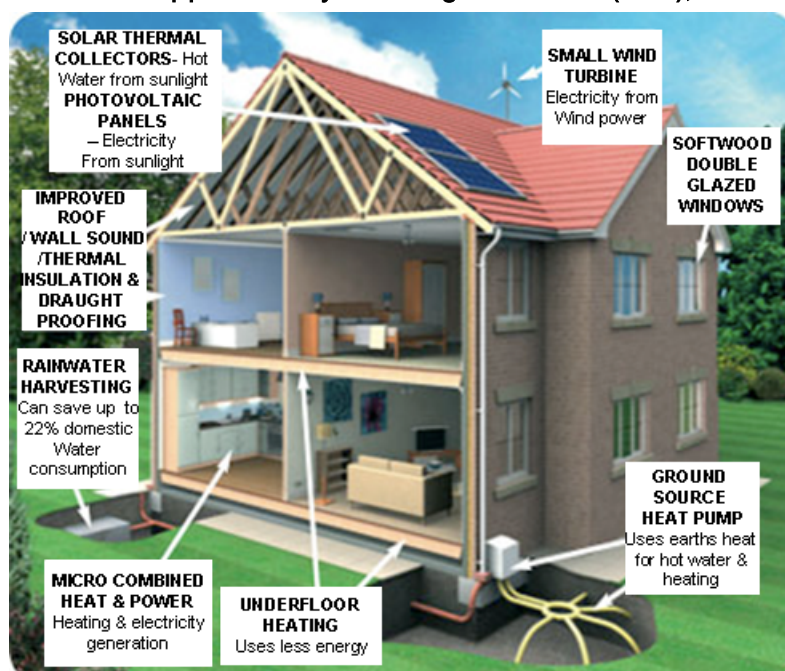
Cabinet Member for Planning & Regeneration, Councillor Toni Mallett, said:

"We are committed to cutting CO2 emissions by 40 per cent by 2020, & this new guidance sets out how the planning process can help us to achieve this.

"We all use energy in our homes, including for heating, lighting & water, but unfortunately a lot of

that energy goes to waste. More than 50 percent of CO2 emissions in the borough come from energy used in homes. Energy efficient homes are not only better for the environment, but also cost less to run. By encouraging developers to make a commitment to energy efficient buildings, we can take even greater strides towards cutting CO2 & making Haringey London's greenest borough."

For more information on the SPD & how to comment on the consultation turn to page 5, 'Saving the world one brick at a time' article.



Green Deal to Create Green Jobs

A plan to create almost 250,000 jobs in green industries will turbo-charge the economy & help offset budget cuts.

The Government's Green Deal to radically overhaul the energy efficiency of homes & small businesses could support a quarter of a million jobs over the next 20 years. The "green deal" will lead to thousands of workers modernising some 26 million homes to make them more energy efficient as part of the coalition's ambition to be the "greenest government ever".

Top 5 facts about the Green Deal

- Every one of the 26 million homes in the UK could benefit in some way from the Green Deal as well as many of the UK's businesses;
- It's estimated that there are 14 million insulation measures like loft, cavity & solid wall to be carried out in Britain's homes;
- The most energy inefficient homes in the UK could save, on average, around £550 per year by installing insulation measures under the Green Deal;
- The Energy Security & Green Economy Bill will be introduced in the Autumn to legislate so that long term repayment can be made through a charge on a home's energy meter;
- The Green Deal is expected to be available in late 2012.



For more information go to: www.decc.gov.uk

Green Buildings Materials

Production & use of building materials consumes large quantities of energy & resources & generates waste therefore choice of materials has important implications for the environment.

What is Green Building?

Green building (also known as green construction or sustainable building) is the practice of creating structures using processes that are environmentally responsible & resource efficient throughout a building's life cycle.

What is a green building product or material?

Green building materials are composed of renewable, rather than non-renewable resources & are environmentally friendly because impacts such as extraction, transport, processing, fabrication, installation, reuse, recycling, & disposal are considered.

- **Re-used or recycled** – cuts out emissions & energy consumption associated with producing new materials & reduces waste.
- **Low toxicity** - free of harmful chemicals such as CFCs
- **Local sourcing** – may help to reduce energy use & environmental impacts associated with transportation
- **Responsible sourcing** - independent certification schemes exist to confirm that specific materials comply with responsible sourcing standards (such as timber).

What will Haringey Council do?

We will encourage developers to achieve high levels of environmental performance in all developments through:

- Adoption of policies on sustainable materials, particularly through the Sustainable Design & Construction Supplementary Planning Document
- Robust application of new & existing planning policies &
- Promotion of relevant options & technologies.

The **Building Research Establishment's Green Guide** provides a simple tool to enable the identification of the environmental implications of different material choices. The guide measures & assesses a range of environmental impacts & offers a summary rating (A+ to E) indicating each material environmental impact. For further information you can visit the BRE website www.bre.co.uk

For more information contact: Richard Truscott, 020 8489 5241

Peabody Retrofit Project

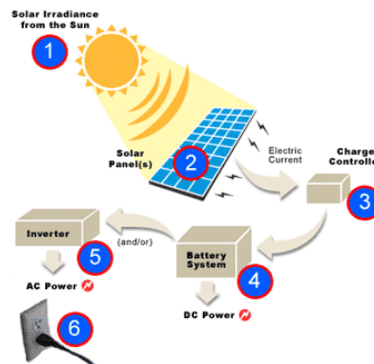
Peabody Trust working with HTA Sustainability & Innovation Design Consultants (recent hat trick winners at the British Homes Awards 2010) are working on a project with the aim to demonstrate how to achieve 80% reductions in the CO2 emissions of the existing housing stock.



Peabody (who manage more than 19,000 homes across the capital) wanted to assess how to treat some of their more modern housing stock, built in the 1970's & have chosen a terrace of four dwellings in Elizabeth Place, Haringey N15 to pilot the project.

Key retrofit features of the project will include:

- Insulating the dwellings from the outside,
- Replacing windows with high performance versions,
- Replacing individual heating systems with a communal system which will be housed in a small boiler room at the end of the terrace, & will feature a large hot water store fed from a shared solar thermal system
- Installing a photovoltaic array



The main internal works will be to install a Mechanically Ventilated Heat Recovery system. This will contribute to reducing the heating demand in the winter months & will provide background ventilation to the kitchen & bathrooms all year around.

This project is part of the Retrofit for the Future Programme, funded by the Technology Strategy Board. The project gained Planning Permission in June & will commence in August 2010 & will be monitored by the Energy Savings Trust for one year after completion.

For more information: www.hta.co.uk

Retrofit Scheme (RE:NEW) Pilot Project

RE:NEW is a project funded by the London Development Agency which aims to reduce domestic carbon emissions so as to help the capital to achieve its target of a 60% reduction by 2025. Early this year Haringey Council ran a pilot project in West Green & Bruce Grove to refine the RE:NEW programme before it is rolled out across London. Over 500 households were surveyed as part of this project & 487 of them went on to receive simple energy saving measures such as low energy light bulbs, power downs, standby savers, real time energy monitors & radiator panels & loft insulation. The result of this work is estimated to reduce carbon emissions by 122 tonnes per year.

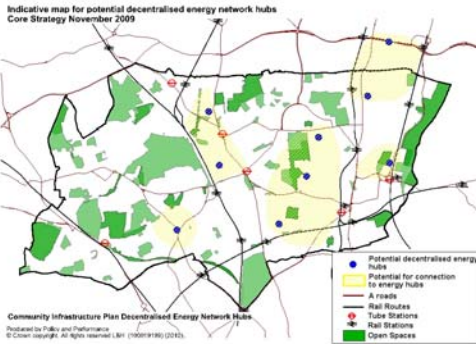


Haringey Council has recently submitted a second bid to run a RE:NEW scheme across White Hart Lane, Northumberland Park & Woodside wards in the financial years 2010-2011 & 2011-2012. As in the pilot scheme households will be offered simple energy saving measures together with a whole host of water saving measures (cistern devices, tap aerators, shower timers) that have been secured for free from Veolia Water. Households will be referred to their energy companies for harder measures such as loft & cavity wall insulation.

For more information contact:
Sule Nisancioglu, 020 8489 5562

Working towards a Low Carbon Haringey: Decentralised Energy

The implications of our actions on the environment are increasingly clear & action is needed at global, national & local levels.



In the Core Strategy an indicative map has been developed for potential decentralised energy network clusters. These include Haringey Heartlands & Tottenham Hale growth areas, a southeast hub focusing on St Anns Hospital, Lawrence Road & Broadwater Farm complex, & a north hub around Northumberland Park. There is also the potential for a decentralised energy hub in the Crouch End area. These indicative hubs & other opportunities will be explored in more detail in Area Action Plans for Seven Sisters, Northumberland Park & Tottenham Hale & Wood Green/ Haringey Heartlands & in the Councils forthcoming Supplementary Planning Document on Sustainable Design & Construction.

The London Heat Map is a map-based data tool to assist developers & local authorities in identifying & implementing decentralised energy. **London Heat Map:** www.londonheatmap.org.uk/Mapping/

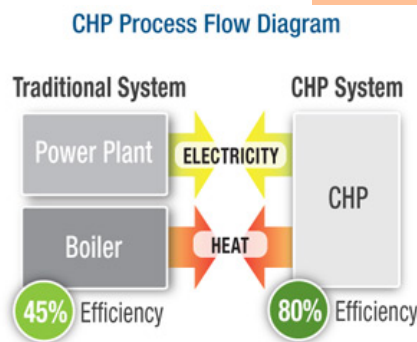
Over time, Haringey & its partners will populate the London heat map with Haringey specific information on heat load & demand, & identify opportunities for new developments or major retrofitting projects to connect to or future proof buildings & sites to connect to future decentralised networks.

Haringey Interactive Heat Map: <http://www.seeit.co.uk/haringey/Map.cfm>

For more information contact: Sule Nisancioglu, 020 8489 5562

The council wishes to limit climate change using a number of methods, one of which is to increase energy efficiency & increase the use of renewable energy sources through establishing decentralised energy networks (**Core Strategy Policy SP4**).

Haringey is in the process of identifying locations for potential decentralised energy network hubs. Based on the various studies outlined



Muswell Hill Low Carbon Zone



Haringey Council is one of 10 London Boroughs to have been awarded funding from the Mayor of London & is the only London borough that has also been selected to take part in the Department of Energy & Climate Change, Low Carbon Communities Challenge, receiving in total around £700,000 to develop an exemplar scheme providing Haringey with the know how to deliver carbon reduction schemes across the borough. The aim of the project is to achieve a 20%

reduction in CO2 emissions by 2012 & a 60% reduction by 2025. This will be achieved by working in partnership with residents & community organisations, local businesses & schools.

The project is led by a steering group containing representatives from the partner organisations, community groups & local residents.

Energy saving measures will form the largest part of the Low Carbon Zone target, with an anticipated 14% saving from the baseline. A further 3.5% will be achieved through behaviour change advice alone, & a further 1% saving will be achieved from each of the sustainable transport measures, community buildings & domestic micro renewable energy. A 0.5% saving is expected from energy efficiency in businesses.

Muswell Hill Sustainability Group (MHSG) has played a key role in developing the project & have set up 'En10ergy' as an Industrial Provident Society which residents can invest in. En10ergy will lease roof spaces locally to install renewable energy technologies & recycle revenue generated back into further carbon saving measures.

For more information visit:

www.haringey.gov.uk or
www.en10ergy.co.uk

Microgeneration Permitted Development Move

The Government is poised to publish the regulations needed to enable householders & businesses in England to install micro-wind turbines & air-source heat pumps without the need for planning permission. These microgeneration systems are due to join biomass boilers & solar panels as permitted development under the development control regime. The relaxation of the planning rules will come with strict caveats about size, noise levels, location & the visual impact on an area.

In a separate but related development, energy & climate change secretary Chris Huhne has announced the Government's plans to repeal the 1976 Local Government Act which currently prevents councils from selling electricity from local wind turbines or from anaerobic digestion plants. Huhne said: "I want to see this repealed. By the end of the year, I hope local authorities will be able to sell electricity from renewables – generating revenue to help local services & keep council tax down: local communities, truly benefiting from the low-carbon transition. This will allow local authorities to take full advantage of the incentives that are available through feed-in tariffs to invest in renewable energy on their own buildings. We are also keen for local authorities to work with other partners on community-scale renewable electricity schemes which can be supported by feed-in tariffs."

For more information: www.planningportal.gov.uk

The Transport Strategy for Haringey

Haringey has prepared its draft Local Implementation Plan (LIP) which will set out how we intend to implement the Mayor's Transport Strategy within the borough. The Local Implementation Plan aims to provide a mechanism to deliver well-integrated transport improvements for the borough & gives transport policy support for the next 20 years.

Our objectives for the LIP include: **addressing traffic congestion, improving road safety & reducing crime, Improving accessibility & supporting regeneration.** The plan includes a three year funding submission for 2011 to 2014. Our focus is on improvements to Harringay, St Ann's, Seven Sisters & North Tottenham neighbourhoods & Green Lanes &

Wood Green High Road corridors.

We are also seeking to reduce road user casualties through local safety schemes; provide inexpensive home zone treatments, introduce local pedestrian & cycle routes, cycle training & parking & a range of behavioural changes measures as part of 'smarter travel' including school & workplace travel planning & road safety education, plus on-street charging points for electric vehicles. Our maintenance programme targets the principal road network & bridge strengthening.

Consultation on the draft is for 6 weeks from 27 September & will be on the Council's website. We are required to submit the draft LIP to Transport for London by 20 December 2010. **For more information contact: Malcolm Smith 020 8489 5574**

London's Greenways

Londoners will be able to enjoy a greener, more peaceful side to the capital this summer, with a stroll or cycle along a series of new & improved pathways, thanks to a £1.3m investment by the Mayor & Transport for London (TfL).

The Greenway schemes are flagship projects in the Mayor of London's Great Outdoors Programme which is delivered by TfL & the LDA working closely with the London Boroughs. Today's scheme is part of a larger TfL £4m 09/10 investment in Greenways to improve London's network of walking & cycle routes running through parks, heaths & forests & alongside rivers & canals.



railway that ran between Finsbury Park & Alexandra Palace. Covering four & a half miles it is London's longest Local Nature Reserve & supports a remarkable range of habitats & wildlife.



Other projects that have benefited from the investment include:

- Ingrebourne Valley, Havering
- Hounslow Heath, Hounslow
- Hogsmill Bridge, Kingston
- Danbury Street Ramp, Islington
- Grand Union Canal, Kensington & Chelsea

For more information about Greenways: www.tfl.gov.uk

For more information about Parkland Walk: www.haringey.gov.uk

Work will be completed on seven Greenway projects across the capital this summer, one of which is **Haringey's Parkland Walk**, a three km improved cycle & pedestrian path along a disused railway. Parkland Walk follows the course of the old

Cycle Superhighways

The Cycle Superhighways project is one of TfL & the Mayor's main ways of bringing about a London cycling revolution, aimed at increasing cycling in London by 400 per cent by 2025.

Twelve new Cycle Superhighways are being built to improve cycling conditions for people who already commute by bike & to encourage those who don't to take to pedal power. These clearly marked blue routes will provide safe, fast, direct routes into central London from outer London, they will help cut congestion, relieve overcrowding on public transport & reduce emissions. The first two routes opened in July 2010,

with ten more being introduced by 2015. The two routes are **CS3** from Barking to Tower Gateway & **CS7** from Merton to the City. **There will be 2 cycle superhighways that run from Haringey into the city, they are:**

- CS12: Hornsey, along the A1 – to be completed by 2012
- CS1: Tottenham, along the A10 – to be completed by 2015

For more information go to: www.tfl.gov.uk



'DIY Streets' Pilot Project

The project 'DIY Streets' is a joint initiative between Haringey Council & sustainable transport charity Sustrans to redesign the urban space in the neighbourhood to the south-east of Turnpike Lane station.

The project wants residents to get creative & help shape solutions to tackling key problems like traffic congestion & road safety. The project is part of a wider UK initiative by the charity looking at good design for urban spaces to help naturally restrict car use & foster walking, cycling, play & other social activity.

The project is the first of its kind in the UK & if successful it may be replicated in other areas of the borough.

For more information:
www.sustrans.org.uk

Minimising Waste, Water Use & Pollution

Waste & Recycling

Haringey is committed to the sustainable management of waste through prioritising waste reduction, reuse & recycling, as reflected in the **Sustainable Community Strategy & the Greenest Borough Strategy**. Over the previous three years around a quarter of the boroughs household waste has been recycled, reducing the amount that is sent for disposal & all households & schools in the borough now have access to convenient & comprehensive recycling facilities, There are also two Reuse & Recycling Centres in the borough which accept an increasing range of materials & items for reuse & recycling.

North London is expected to manage over 1.5 million tones of waste in 2010, rising to over 2.3 million tones by 2020. Whilst the Council will continue to develop its waste reduction & recycling policies to minimize the environmental impact of municipal waste under its control, it will be necessary for North London to develop new solutions & facilities for managing waste sustainably, & as far as possible, within the boundaries of the sub region. Haringey Council supports the objectives of sustainable waste management set out by the Government in **PPS10—Planning for Sustainable Waste Management** & the **Mayors London Plan**.

To achieve these the council will:

- **Seek to minimize waste creation**, increase household recycling rates & address waste as a resource & look to disposal as a last option,
- **Require integrated, well designed recycling facilities** to be incorporated into all new developments & require Site Waste Management Plans for all major planning applications,
- **Continue to work with the seven North London boroughs** that constitute the North London Waste Authority to develop a Joint Waste Plan which will identify sufficient sites to cover 85% of the waste produced in the North London area taking into account minimization of pollution, nuisance, transport & other potentially negative impacts. **For more information:**

www.nlwp.net / www.haringey.gov.uk

www.communities.gov.uk

www.london.gov.uk/thelondonplan/

Water Management

The Council will require all development in Haringey to use less water during construction & operation, & to reduce the potential for general & flash flooding.

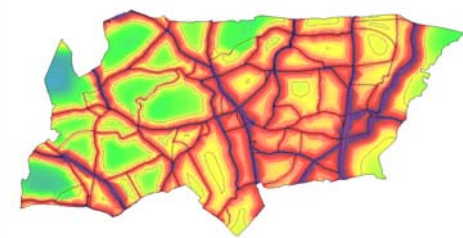
All Development shall:

- Improve the water environment, quality, & drainage systems & minimise water use
- Assess flood risk & implement measures to prevent local surface water & downstream flooding
- Implement Sustainable Drainage Systems from strategic to individual site level
- Restore & enhance the Blue Ribbon network including Pymmes Brook, Moselle Brook, & the River Lee

For more information go to 'Chapter 4' of Haringey's Core Strategy: www.haringey.gov.uk

Avoiding Environmental Pollution

The whole of the borough of Haringey is an Air Quality Management Area (AQMA) for the pollutants of NO₂ (Nitrogen Dioxide) & PM10 (particles of 10 micrometers or less). The dominant source of NO₂ & PM10 emissions in Haringey is road transport with a variety of other sources contributing emissions.



Haringey's Planning & Regeneration Service are in the process of producing a Sustainable Design & Construction Supplementary Planning Document (*see page 6 'Saving the World one brick at a time' article*) which will set out what is required from developers with regards to air quality assessments.

Any development in an area of air pollution concern or is of a major size will require an air quality assessment (AQA) to be submitted with the planning application as part of the decision making process. In principal an AQA will be required;

- If the development is likely to cause a deterioration in local air quality
- If the development is located in an area of poor air quality
- If the demolition/ construction phase will have a significant impact on the local environment
- If the development prevents implementation of measures set out in the Air Quality Action Plan

Developers should incorporate any mitigation measures into the design of their schemes prior to application submission. A planning application which does not include an air quality assessment that requires one will either delay the decision making process or planning permission will be refused.

For more information: Sule Nisancioglu, 020 8489 5562

See the below article to find out what is & will be done in the Capital to improve air quality:

The Mayor's Draft Air Quality

Following consultation with the London Assembly & functional bodies, which ran from October-November 2009, the Mayor published a second Draft Air Quality Strategy for public consultation on 28 March 2010.

The strategy sets out a framework for delivering improvements to London's air quality & includes measures aimed at reducing emissions from transport, homes, offices & new developments, as well as raising awareness of air quality issues. Over the last few years, a number of innovative measures

have been introduced to help improve air quality in London. Nevertheless, air pollution remains a problem in the capital, as is clear from the fact that European Union targets for air quality standards that were intended to be met in 2004 & 2005 have still not been achieved.

The final strategy is expected to be published later in 2010.

For more information go to:

www.london.gov.uk

'A city that becomes a world leader in improving the environment'

Haringey's Core Strategy together with the London Plan & the emerging Development Management Policies make up the statutory 'development plan' for Haringey.

The Core Strategy must be in general conformity with the Mayor's London Plan (2008), & has been drafted to provide a robust, locally distinct policy for Haringey that does not repeat regional guidance.

The London Plan sets a social, economic & environmental framework for the future development of the capital, providing the London-wide context for borough planning policies.

The London Plan is currently being revised in response to the new Mayor & the fact that the status of the Plan has altered with new planning legislation. The new London Plan is due to be adopted late 2011.

One of the London Plan's main objectives is 'to make London an exemplary world city in mitigating & adapting to climate change, & a more attractive, well-designed & green city.' The London Plan sets out policies to deliver this objective, which in turn sets guidance for Haringey's own policies. The broad policy areas which set a precedent for Haringey's green policies include:

- Tackling climate change
- Sustainable energy
- Adaptation to climate change
- Sustainable planning for flood risk management
- Efficient use of water
- Improving air quality
- Reducing noise
- Planning for waste
- Planning for minerals
- Contaminated land
- Hazardous substances

The policies in the new London Plan on 'London's response to climate change' cover the green policies in the current London Plan & will support the delivery of the objective to ensure London is 'a city that becomes a world leader in improving the environment'. **More information: Sule Nisancioglu: 020 8489 5562**

Connaught Gardens: Design Award Winner 2010

This unique site near Highgate Woods has won the 2010 Graham Pye Design Award for the perfect home plan.

The steeply sloping site has a lower ground floor level which opens out onto decks at the back, while the end house extends into gaps in the tree canopy with a pavilion which houses an entrance hall & high level terrace above.

The development has zoned under floor heating & has been designed so that it naturally ventilates & lights itself as far as practical. Minimum energy inputs are required to achieve comfort levels & solar gain in the rooftop lantern provides cooling to the remainder of the house in peak temperatures. The materials used in the development are robust, low maintenance & intended to improve in appearance through the process of weathering.

**For more information contact:
Mortimer MacSweeney
020 8489 2841**



Saving the World one brick at a time

With ever increasing demands on developers to produce developments that minimise carbon dioxide emissions, are efficient in their use of resources & are healthy & adaptable amongst many other things, there is a need for clear guidance from Central & Local Government about how developers can achieve them.

The Sustainable Design & Construction Supplementary Planning Document (SPD) is currently being developed by Haringey's Planning & Regeneration Service to provide advice to those seeking planning permission for development & also those wanting to make environmental improvements to a building.

A Supplementary Planning Document (SPD) outlines general principles & sets preferred standards that developments should follow; the SPD does not create policy but provides detailed guidance on how our policies will be applied. The new Sustainable Design & Construction SPD relates to policy emerging from the draft London Plan & corporate local policies on climate change coming from the Council's Greenest Borough Strategy.

The SPD consultation will run from November 1 to the end of January 2011. For more information, or to have your say, visit:

www.haringey.gov.uk/haveyoursay

London Council's Climate Change Best Practice Publication

The London Councils has put together a document with case studies to show how London boroughs are tackling climate change. The case studies highlight a selection of London's local & joint partnership initiatives, each at different stages of progress, & aim to champion the continuation of a lead role for local authorities in tackling climate change.

www.londoncouncils.gov.uk/lowcarboneyconomy

Haringey is one of the case studies. Haringey's entry is focused on spatial planning & climate change mitigation in the context of wider Greenest borough strategies & actions.

**For more information: Sule Nisancioglu,
020 8489 5562**

Lordship Lane Recreation Ground

On 1st October 2010 the Heritage Lottery Fund (HLF) & the Big Lottery Fund (BIG) announced that the Stage 2 funding application for Lordship Recreation Ground was successful confirming funding* of £3.8million under their Parks for People scheme. Haringey Council will also be contributing over £3m in capital & running costs, with a further £400,000 from the Mayor of London's Help a London Park Scheme & £300,000 from the Environment Agency.

The grant will enable the restoration of the park's unique features including:

- restoration of the Moselle River, which includes a long-term water cleansing programme
- restoration of historic features including the Shell Theatre
- a model traffic area, created in the late 1930's for children on bicycles & in pedal cars to learn highway safety on a miniature road layout complete with traffic signs & zebra crossings.



Amongst the many improvements planned for the Lordship Rec. **there are exciting proposals to build a new Environment Centre** which will offer a broad programme of environmental & eco education for schools & families. From water life in the river & lake to ecosystems in the meadows, gardens & woodland areas, projects will be designed to tie in with a range of topics in the school curriculum. The new Environment Centre will be an exemplar low energy building & will be constructed with natural, robust materials.

As part of delivering new Training & Volunteer programmes, community Group Back to Earth (B2E) will be working on the project to ensure that they involve local people & will train & educate volunteers & trainees in usable & transferable green skills & will encourage community gardening & growing of organic produce.

B2E are also planning a range of improvements to the grounds of the Broadwater Community Centre which include community-led local food growing, landscaping, green gym, & gardens.

This project will feature on ITV's 'The Peoples Millions' programme on Thursday 25th November at 6pm where you can vote to show your support for the scheme.

Your vote on the 25th could mean £50,000 to make the improvements a reality! Voting will be from 9am to midnight, & up to 10 calls can be made from each phone.

For more information go to: www.haringey.gov.uk

The Code for Sustainable Homes & BREEAM

Buildings contribute almost half of the UK's carbon emissions. The Government's long term goal is to reduce carbon emissions by 60% by 2050 & in order to do this Local Authorities are using the Code for Sustainable Homes & BREEAM (Building Research Establishment Environmental Assessment Method) as one way of achieving local & national targets.

The Code for Sustainable Homes is for new homes, homes are rated on a scale of 1-6 (6 being the most sustainable). The rating a home receives depends on how it measures up in 9 categories including energy & CO2 emissions, water, materials & waste. BREEAM is a scoring tool used to measure the sustainability of new non-domestic buildings & sets the standard for sustainable design. BREEAM has been developed in line with the current Building Regulations.

Local Authorities use the Code for Sustainable Homes & BREEAM as a condition of planning permission to ensure that new homes & buildings meet targets. In 2009 Haringey Council adopted a target of reducing CO2 emissions by 40% by 2020, currently the Council state that all new dwellings should be a minimum of code level 3 & that this will rise to level 4 when the Core Strategy is fully adopted.

For more information:

www.breeam.org

www.communities.gov.uk



Grow your own Food

Increasing the sustainability of the food we buy is one of the ways that we can all make a difference in the fight against climate change.

The Sustainable Development Commission Capital Consumption report from November 2009 found that food consumption is responsible for 10% of London's CO2 emissions, & 19% of total greenhouse gas emissions. Sustainability takes into account the process from field to plate. A key word in the sustainable food dictionary is "local" - minimising energy used in food production, transport & storage.

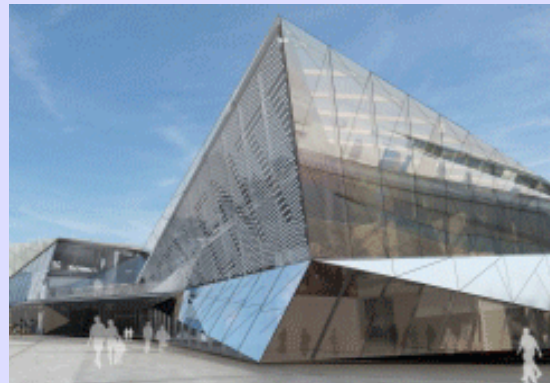
Under the Council's Greenest Borough Strategy, we are committed to developing a sustainable food policy & strategy. A Sustainable Food Strategy is being developed with a steering group of local partners & is planned to be launched in autumn 2010. The food strategy is broad ranging in its scope encompassing raising awareness & education, food growing, food waste & resources & local enterprise. Haringey has already committed to developing 60 new food growing spaces in the borough as part of the Capital Growth Campaign to develop 2,012 food growing spaces by 2012.

Public consultation on the strategy will begin in September 2010. For more information: www.haringey.gov.uk



London's Green Enterprise District

The Mayor has announced plans for a new landmark building in east London kick starting the Green Enterprise District (GED), a project that will transform one of the most deprived areas of our capital & help stimulate a low carbon marketplace across London. The GED is located in East London covering six London boroughs: Hackney, Tower Hamlets, Newham, Waltham Forest, Barking & Dagenham & Havering. The District will exploit the potential from undeveloped plots of industrial land to attract new investment, create up to 6000 new jobs & develop new low carbon skills.



Siemens plc are investing £30 million in an iconic building that will provide a showcase for sustainable design & construction. It's hoped that the Siemens Pavilion will attract over 100,000 visitors a year, including school groups across London who can take advantage of the pavilion's educational facilities.

The design of the building itself will:

- Maximise the use of natural daylight
- Use photovoltaic panels
- Use rainwater harvesting facilities
- Use ground source heat pumps & solar water heating
- Have sustainable drainage & water efficient landscaping
- Incorporate high performance glazing
- Use energy efficient lighting & metering
- Use water efficient appliances
- Use recycled steel & industrial by-product cement

For more information go to: www.london.gov.uk

Upper Lee Valley's inclusion in the Green Enterprise District

Haringey Council & the North London Strategic Alliance (NLSA) responded to the London Plan consultation, asking for the Upper Lee Valley (ULV) to be included within the GED. The Mayor has since agreed that this proposed major economic growth area will be included in the GED & this will show in the amendments to the emerging London Plan.



Upper Lee Valley– Potential for a Green District



The ULV is a 10km corridor, stretching from Lea Bridge Road, to the M25 & is part of the London, Stanstead, Cambridge, & Peterborough Growth Corridor. The area contains some of London's most-deprived wards, extending through Tottenham & Edmonton. At the same time it contains London's second largest industrial site & the environmental benefits of the Lee Valley Regional Park.

The ULV's industrial/ commercial clusters are proposed as a major economic growth element for the area. It has available sites, underused industrial land, & 'lazy assets' such as wasted waterside land or factory buildings nearing the end of their useful life, these aspects including the Council's emerging plans for Marsh Lane & the North London waste plant in Edmonton make the ULV an area with lots of potential to become a green district.

Figures released in 2009 by the government showed that the UK green goods & services sector was the 6th biggest in the world. The introduction of green industries, can provide development opportunities for the local community in relation to new skills & job opportunities. A snap shot assessment by the North London Business indicates that already there are over 75 companies located in the ULV region

working on the "green" sector, mostly associated with recycling & waste. The Upper Lee Valley contains strategic industrial land & therefore has the potential to provide for a range of workspaces of different types, sizes & costs to meet requirements of different sectors of the economy.

These locational & business characteristics of the ULV corridor, when coupled with corporate & spatial planning initiatives on low carbon communities in Enfield & Haringey, create a great opportunity for innovative solutions for low carbon economy in the ULV corridor.



For more information: www.upperleevalley.org.uk

Planning & Regeneration Business Plan 2010-13

The Planning & Regeneration Service brings together the Borough's land use and economic development functions. We are responsible for controlling and enhancing development and securing the physical and economic regeneration of the Borough, in order to make Haringey an attractive, efficient and sustainable place to live and work.

Sustainable Community Strategy Themes:

1. An environmentally sustainable, safe & well designed future
2. People at the heart of change—major projects progressed
3. Economic vitality and prosperity shared by all
4. Effective Customer Services

Objective 1: Development Management & Building Control - By 2013 ensure both services offer strong advice and guidance on green buildings

Key Activities in 2010/11:

- **Better Development Management** - promote pre-application services and become a better electronic service for customers
- **Promote Green Buildings** - promoting developments that cut carbon emissions and promote energy efficiency. Introduce zero carbon targets for new buildings and guidance for low carbon refurbishments
- **Green Building Training** - Guidance on Green Building to Planning & Regeneration staff, Members, local planning agents and residents
- **Improve the service and information we provide to customers and Planning Committee** - act on results from feedback to Customer Satisfaction Survey, improve Member/Committee training and hold two Agents Forums

Objective 2: Policy & Local Planning - By 2013 schemes at Tottenham Hotspur, Seven Sisters, Tottenham Hale & Green, Haringey Heartlands, Hornsey Depot, Hornsey Town Hall will be progressed

Key Activities in 2010/11:

- **Major Sites & Section 106** - report on the spending of £6m of S.106 contributions across the Borough and progress on all major sites
- **Area Planning** - progress plans for Tottenham High Road & Tottenham Hale, Wood Green/Haringey Heartlands, Seven Sisters and St Ann's
- **A Plan for Haringey** - publish a new plan for Haringey 2011-26 focussing on regeneration in the east of the Borough and improvement in the west
- **Design, Conservation & Heritage** - building improvements in Tottenham, Green Building Guide, South Tottenham Design Guide and Crouch End Conservation Area Guide will be produced

Objective 3: Economic Regeneration - By 2013 the Council will have launched a new business & employment service, promoted 180 new apprenticeships and set up a credit union

Key Activities in 2010/11:

- **Employment Programme** - ensure over 200 Haringey residents get a job & create a new Credit Union
- **Apprenticeship Programme** - 60 new apprenticeships created
- **Business Support** - provide simple to use business advice & town centre business support grants
- **Town Centre Management** - provide £74k Town Centre Management grants to Green Lanes, Tottenham, Wood Green, Crouch End and Muswell Hill

Objective 4: The Planning and Regeneration Service - By 2013 the service will have increased electronic services to customers and regularly act on customer feedback

Key Activities in 2010/11:

- **Improve the service we provide to our customers** - better and easier to use website, three editions of the Planning & Regeneration Newsletter, report on customer feedback, two agents forums & councillor planning induction service
- **10:10 Carbon Reduction and New Ways of Working** - begin actively changing the way we work to reduce our carbon footprint and bring in other new ways of working to reduce costs
- **Service Restructure & Value for Money** - create a service that delivers more for less and examine shared services across North London

The Building Control Customer Satisfaction Survey was sent out to applicants, agents & builders who submitted an application with Building Control between January & October 2009. 94 responses were received to the survey.

Overall Satisfaction...

Of those who responded 82% were satisfied with the service they received from the Building Control Service.

	Strongly	Agree	Neither	Disagree	Does not apply
I was given the advice and help I needed to submit my application correctly	12%	57%	11%	3%	14%
When asked, the council kept me informed about the progress of my application	17%	51%	10%	6%	13%
The council dealt promptly with my queries	20%	49%	11%	12%	5%
I understand the reasons for the decision made on my application(s)	20%	59%	4%	3%	11%
I felt that I was treated fairly and that my viewpoint was listened to	23%	54%	7%	3%	7%

Online Applications...

Only 20% of those who responded submitted their application online through the Haringey Council website.

Areas for Improvement...

Feedback from the survey highlights the need to promote the use of our online facilities and to review the availability of technical officers during the day to deal with enquiries.

Advice & Guidance...

48% used the information available on the Building Control web pages to assist with the submission of their application. 80% of those who utilised the website found the information useful and easy to understand.

"Haringey Building Control are one of the best I deal with"

Customer Satisfaction

Development Management

	Strongly	Agree	Neither	Disagree	Does not apply
I was given the advice and help I needed to submit my application correctly	18%	44%	14%	13%	9%
The council kept me informed about the progress of my application	9%	50%	16%	19%	4%
The council dealt promptly with my queries	12%	46%	14%	18%	10%
I understand the reasons for the decision made on my application(s)	17%	63%	5%	10%	4%
I felt that I was treated fairly and that my viewpoint was listened to	17%	49%	10%	18%	5%

Overall Satisfaction...

Of those who responded to the survey, 72% were satisfied with the service they received from Development Management when processing their application.

Areas for Improvement...

Feedback shows a need to review the pre-application advice services available and, as with Building Control, promote the use of online applications.

169 responses were received to the Development Management Customer Satisfaction Survey, the survey was sent to planning applicants and agents who had their planning application decided between September 2008 and December 2009.

Online Applications...

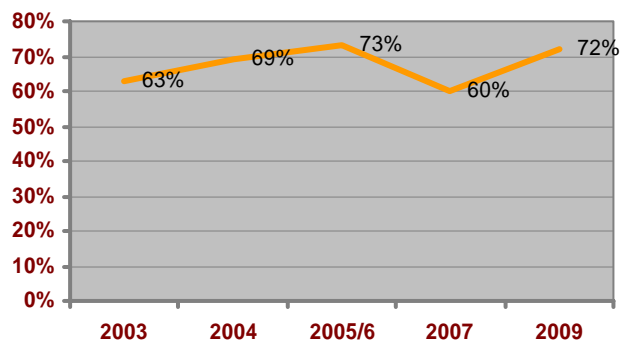
Of the 169 who responded, only 29% said that they submitted their application online via the Planning Portal.

Advice & Guidance...

70% of those who responded to the survey said that they discussed their application with a Planning Officer before submitting an application.

63% of respondents said that they used the planning pages on the Haringey website to assist with their application. 76% of those who said that they used the website also said that they found the information useful and easy

The table below shows customer satisfaction



"The information available online through the Haringey website is really useful"