

# Children and Young People's Plan

Needs Assessment 2009



*Better Futures*



**Haringey Children's Trust**  
Working together for the children of Haringey



**The Haringey Children's Trust is made up of representatives of the following organisations:**

- Haringey Council
- Local Safeguarding Children Board (LSCB)
- NHS Haringey
- North Middlesex Hospital trust
- Barnet, Enfield and Haringey Mental Health Trust
- Whittington Hospital Trust
- Great Ormond Street Hospital
- Community Link Forum
- HAVCO
- Learning and Skills Council (London North)
- College of North East London
- Job Centre Plus
- Haringey Primary Schools
- Haringey Secondary Schools
- Haringey Sixth Form Colleges
- Haringey Special Schools
- Haringey Probation Service
- Metropolitan Police
- Haringey Youth Offending Service
- Haringey Youth Council
- Haringey North Area Children's Partnership
- Haringey South Area Children's Partnership
- Haringey West Area Children's Partnership

For more information visit our website at: **[www.haringey.gov.uk](http://www.haringey.gov.uk)**  
or email us at **[cypp@haringey.gov.uk](mailto:cypp@haringey.gov.uk)**

## Contents

<b>Foreword</b>	<b>6</b>
<b>Introduction</b>	<b>7</b>
<b>How to use this document</b>	<b>10</b>
<b>Executive Summary</b>	<b>11</b>
<b>Profile of Haringey</b>	
<i>Section A - The Haringey Context</i>	
1. Introduction	24
a Population	24
b Health	24
c Economy	25
d Child Poverty	25
e Housing	26
f Crime	26
2. Indices of Deprivation	27
3. Worklessness	29
Implications	30
<i>Section B - Key facts about children and young people in the borough</i>	
1. Introduction	31
2. Population of children and young people	31
3. Data on Travel to Study 16-18 Year olds cross border London patterns	43
4. Income deprivation affecting children	43
5. Index of Child Well-being	44
6 Vulnerable children	47
Implications	48
<b>Be Healthy</b>	
Key Issues	50
1. Introduction	51
2. Context	52
3. Reducing health inequalities, improving health outcomes	55
4. The Early Years	55
a Infant mortality	55
i Birth rate	55
ii Birth weight	56
iii Booking	57
iv Smoking during pregnancy	57
v Initiation of breast feeding	58
b Immunisations	58
5. The Teenage Years	59
a Healthy lifestyles	59
b School meals	61
c Reducing smoking	61
d Drug misuse	61
e Parental substance misuse	65
f Alcohol misuse	68
g Oral health	68
h Accidents	69
i A&E use	69
j Sexual health	69
k Chlamydia	69
l Teenage pregnancy	70
m Mental health in children and young people	71
n Children and young people with disabilities and general health status	72
o Health of children in care	73
p Deaths amongst children and young people	73
q Children and Young People with additional needs - aged 18 – 25 years old	74
r Young carers	74
Implications	75

Gaps in data	77
Sources of information	78
Children's Network Summary	79
National Indicator Performance Table	80
<b>Stay Safe</b>	
Key Issues	82
1. Introduction	83
2. Context	85
3. Community safety	86
4. Youth crime	87
5. Youth Offending Service (YOS)	90
6. Domestic violence	94
7. Road accidents/ deaths	98
8. Vulnerable groups of children and young people	98
a Children and young people who are at risk of significant harm	98
b Children in care	100
i Ethnicity of children in care	103
ii Ethnicity of children subject to a children protection plan	104
iii Health and education outcomes for children in care	104
iv General education	105
v Educational attainment	105
vi Offending	105
vii Development	106
viii Health	106
c Children in care and young people placed for adoption	107
d Care leavers	108
e Refugee and asylum seeking children and young people	108
f Children and young people with additional needs	108
g Young carers	109
h Travellers	110
9. Safeguarding	112
10. Bullying and discriminatory incidents	113
Implications	116
Gaps in data	117
Children's Network Summary	118
National Indicator Performance Table	119
<b>Enjoy and Achieve</b>	
Key Issues	122
1. Introduction	123
2. Context	124
3. Children's Centres	125
4. Play areas in Haringey	127
a Usage	129
b Provision for children and young people with disabilities	130
c Consultation with children and young people	130
d Identified play need	130
5. Access to sports and leisure facilities	132
6. Issues for the Foundation Stage	132
Deprivation	134
7. Issues for Key Stage 1	134
a Looked after children	137
b Special Educational Needs (SEN)	137
8. Issues for Key Stage 2	138
a Looked after children	142
b Special Educational Needs (SEN)	143
c DCFS Contextual Value-added (CVA)	145
9. Issues for Key Stage 3	146
a Ethnic minority pupils	146
b High attaining pupils	147
c Low attaining pupils	147
d Looked after children	148
e Special Educational Needs (SEN)	148

10. Issues for Key Stage 4	148
a Looked after children	151
b Special Education Needs	152
c Ethnic minority pupils	152
d Eligibility for free school meals	154
e Low attaining pupils	154
f DCFS Contextual Value-added (CVA)	154
11. Issues at Post-16	153
a Level 2 & 3 attainment by year people aged 19	158
b Not in Employment, Education or Training	158
12. Statements of Special Education Needs and Disabilities	158
13. Attendance and exclusions	159
a Attendance	159
b Exclusions	162
14. Issue from Ofsted inspections	163
a Primary schools	163
b Special schools	164
c Secondary schools	164
d Schools causing concerns	164
Implications	165
Children's Network Summary	168
National Indicator Performance Table	169
<b>Make a Positive Contribution</b>	
Key Issues	174
1. Introduction	174
2. Context	175
3. Young People's perceptions	175
a Image of Haringey Council	175
b Service delivery	176
c Areas of personal concern	177
d Civic participation	177
4. Place Survey 2008	178
5. Consultations	178
a TellUS 3 Survey 2008/09	179
b Powerful Voices	180
c SEN pupils survey	181
d Views on sex and relationship education	182
6. Bullying	184
7. Youth Offending Services	184
8. Children in Care (CiC)	184
9. Youth services	185
10. Haringey Youth Council	186
11. UK Youth Parliament	189
12. Young Advisors	190
13. Level 2 and 3 attainment by young people aged 19	190
14. Positive activities	190
Implications	191
Gaps in data	191
National Indicator Performance Table	192
<b>Achieve Economic Well-being</b>	
Key Issues	195
1. Introduction	196
2. Context	197
3. Worklessness	202
a Lone parents claiming income support	203
b Job Seeker Allowance claimants with dependent children	209
c Child Tax Credit	209
4. Childcare	213
a Supply	213
b Demand	214
c Needs of children with either a Special Educational Needs or disability	214
5. Child poverty	215

6 Educational attainment	216
7. Not in Education, Employment or Training (NEET)	217
8. Housing	217
9. Children and young people travelling to school	220
Implications	223
Gaps in data	223
Children's Network Summary	225
National Indicator Performance Table	226
<b>Appendix – Workforce development plans</b>	<b>228</b>
<b>Glossary</b>	<b>231</b>

## FOREWORD

Welcome to Haringey's Children and Young People's Needs Assessment 2009. This document is very important to the Children's Trust and it has been produced in partnership with all the services providing for children and young people in Haringey. This document will support the ten year strategic Children and Young People's Plan and the three year implementation plan by identifying how we can best deliver improvements across the five Every Child Matters outcomes.

The data in this document includes information collected locally and nationally. In many cases we are able to compare the experiences of children and young people in Haringey with those across London and across the country. In some cases the information has been collected from the children and young people themselves and also includes what communities have told us.

The Needs Assessment helps to identify areas where our children and young people thrive and where there have been important improvements in areas such as education and health. However, whilst we should be proud of these achievements this document also highlights those areas where further improvements are necessary and where it is essential we target our efforts and resources.

The Children's Trust is committed to ensuring that all our children and young people are able to make the most of a wide range of opportunities created for them. We thank you, on behalf of the Trust, for the part you play in that endeavour.



Cllr Lorna Reith  
Cabinet Member for Children & Young People  
Chair - The Children's Trust\*

---

### \*Membership of the Children's Trust

The membership of the Haringey Children's Trust Board comprises the following partner agencies: Haringey Council, the Local Safeguarding Children Board, NHS Haringey, Haringey Police, the Mental Health Trust, Whittington Hospital, North Middlesex Hospital, Great Ormond Street Hospital, General Practitioner representative, Haringey Voluntary Sector via Community Link and HAVCO, College of North East London, Learning and Skills Council, Area Children Partnerships, Haringey Youth Council, Haringey Schools, the Sixth Form College, Job Centre Plus and the Probation Service.

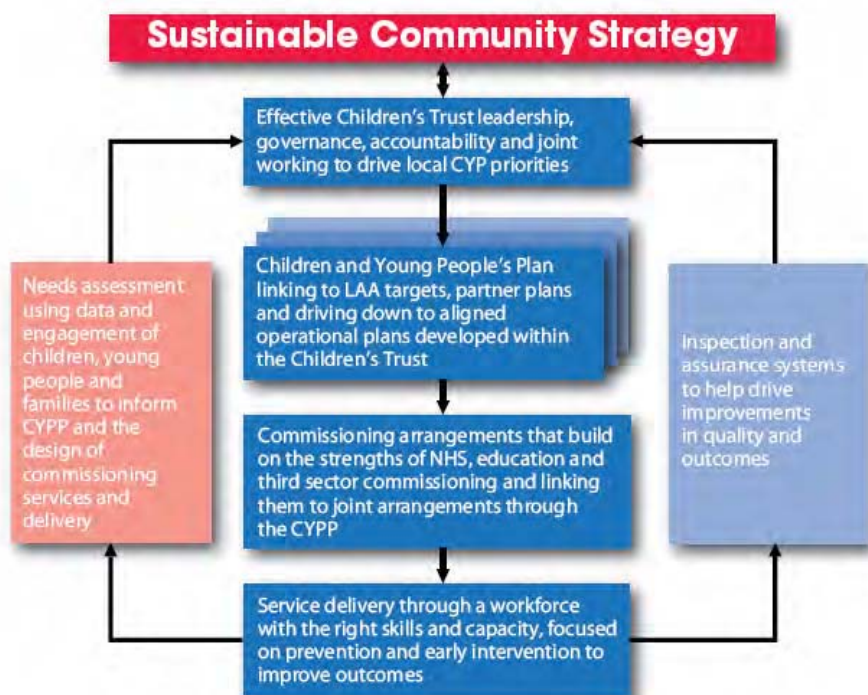
## Introduction

The Children's and Young People's Plan (CYPP) is the statutory overarching plan for all services which directly affect children and young people in an area, showing how the local authority and all relevant partners will integrate provision to improve well-being across all five Every Child Matters (ECM) outcomes and focus on specific challenges and priorities. The five ECM outcomes are: Be Healthy; Stay Safe; Enjoy and Achieve; Make a Positive Contribution and Achieve Economic Well-Being.

The Department for Children, Schools and Families (DCSF) issued [guidance](#) in January 2009 on producing the CYPP. This states that the CYPP must include a needs assessment (NA) against the ECM outcomes. The NA is a requisite component of the strategic commissioning process and the resulting data will aid decision making and prioritisation.

The NA seeks to use all available research, data, information and consultations to paint a picture of what the borough is like. Data analysis across all five outcomes will show where outcomes most need to be improved and where to prioritise resources.

Every attempt has been made to ensure that the most up to date information has been used to prepare this document. However, this has not always been possible due to the different reporting and data verification cycles. As a result the document will be updated annually.



How the needs assessment fits into the wider strategic framework

Source: DSCF

The NA draws on analysis carried out by partners, in particular the statutory Joint Strategic Needs Assessment ([JSNA](#)), as well as other key documents such as the [Joint Area Review Action Plan for Safeguarding Children 2009-12](#) the [Homelessness Strategy](#), the [Safer for All](#) community safety strategy and the [Child Poverty strategy](#). The NA also incorporates routinely collected data sets including published or unpublished research papers, major surveys such as epidemiological surveys, participation data and the results of engagement with children, young people and families.

The document analyses the data on a number of different levels such as regional (e.g. comparison against other London boroughs), community (e.g. age, ethnicity, gender), neighbourhood (e.g. ward, children's network) and at the level of a single agency or service.

The end result is a NA that results in a profile of children, young people and families in Haringey and draws attention to the variation in outcomes between different local areas through baseline and trend data and by providing measurements against relevant national indicators and local area agreement (LAA) targets.

Each chapter of the NA includes the relevant National Indicators taken from the Every Child Matters (ECM) Outcomes Framework and covers quality of life indicators and quality of service indicators. It sets out our annual outturns and targets.

### **Vulnerable children<sup>1</sup>**

This document has attempted to highlight issues for vulnerable children wherever possible. However, data is often limited or unavailable for these groups due to small numbers or to maintain confidentiality. Further work will be required to improve this for future NA.

### **Supporting families**

The vast majority of children and young people are cared for in supportive families with parents who want to do the best they can to help them to achieve. We recognise the need to work in partnership with parents. The Children's Act 2004 and the Children's Plan 2007 reflect this principle and the Children's Trust is working to ensure that more support is provided to parents and families. A Parent Support Strategy is being developed which will set out a coherent approach for all agencies working with parents.

---

<sup>1</sup> "Vulnerable" describes children and young people who face particular challenges as a result of their personal circumstances, for example, those who have disabilities or who are looked after by the local authority, care leavers, those at risk of significant harm, Travellers, asylum seekers and refugees, pupils newly arrived from overseas, those at risk of disaffection, young carers, pregnant schoolgirls, teenage parents, young offenders, those at risk of offending and young victims of crime or discrimination.

## **The recession**

We acknowledge that in the current economic climate this will be a difficult time for families, particularly those most disadvantaged. The recession will exacerbate the high levels of deprivation and poverty that currently exist in Haringey, the fifth most deprived borough in London, and this will impact negatively on families and their children. The possible effects of the downturn are multifaceted – crime is likely to rise, young people will find it harder to secure employment, demand for social housing will increase, more families will fall into debt and seek financial advice. This is all likely to increase pressure on services across the borough.

## How to use this document

This document differs from previous Haringey children and young people's needs assessments because it is structured under the five Every Child Matters (ECM) Outcomes:

- Be Healthy
- Stay Safe
- Enjoy and Achieve
- Make a Positive Contribution
- Enjoy Economic Well-being

The content of each chapter has been informed by the ECM Outcomes Framework. Each of the ECM chapters contains:

- a summary of the **key issues** for that outcome
- a section which **introduces** and then sets the **context** for Haringey
- an **implications** section
- a **gaps in data** section
- a summary of information by **Children's Network area**
- and a table of the relevant **national indicators** and Haringey's performance.

The **contents page** will help you to navigate to your specific area(s) of interest.

In addition the needs assessment also has:

- An **executive summary** at the beginning of the document, including a summary by **Children's Network area**.
- A section at the beginning which contain **key facts** about Haringey and about the children and young people in the borough.
- A **glossary**.
- An Appendix on **Workforce development plans**.

## Needs Assessment Executive Summary

The 54,000 children and young people living in Haringey are not all the same. As the document shows, they will face different challenges even from birth.

The available data allows us to illustrate and quantify some of this difference in order to provide a more accurate picture of the challenges facing groups of children and young people in the borough. The following boxes highlight some of this difference in the context of the five ECM outcome areas and highlights key issues that will be fed into the Children and Young People's Plan.

- Be Healthy
- Stay Safe
- Enjoy and Achieve
- Make a Positive Contribution
- Enjoy Economic Well-being

### a) Some have particular health needs

- The stillbirth rate is 6.4 per 1000, compared to 6.2 and 5.2 per 1000 for London and England respectively.
- Low birth weights were highest in the North Network Area (9.6%) and lowest in the West Network Area (6.4%).
- 8.57% of mothers smoke during pregnancy which is behind the local target of 5.0%.
- Indications are that over one third of children, aged 10-11 (Year 6), are either overweight or obese, compared to under one quarter in reception year.
- 42% of adults in drug treatment in Haringey are parents.
- A total of 277 young people aged 19 years and under were diagnosed with Chlamydia in 2007.
- In 2007 the teenage conception rate was 70.0 per 1000; highest in the North Network Area (94 per 1000) and lowest in the West (40 per 1000).
- There are an estimated 2568 children aged 5-16 with mental health problems.
- There are approximately 3100 children and young people with disabilities in Haringey with approximately 700 having complex and long term disabilities.

### **Key Issues:**

- **Reduce the health inequalities** between the East and West of the borough.
- **Increase the uptake of immunisations** in Haringey which remain well below national target levels.
- **Reduce infant mortality.**
- **Reduce the high level of teenage pregnancy.**
- Increase the number of people tested for **Chlamydia** to identify young people that already have Chlamydia and work on the future spread by promoting wider use of condoms.
- Address the **mental health issues** which will affect 2650 children and young people by 2013, and in particular for vulnerable children who are five times more likely to develop mental health problems.
- Reduce the level of **obesity** especially in the North and South network areas.
- Address the **low rate of referrals into specialist services for drug users.**
- Take forward the **recommendations from the Scrutiny review of the early identification, assessment and referral** of children and young people with drug and alcohol problems.
- **Ensure greater read across to other relevant strategies** when dealing with children and young people with drug and alcohol problems e.g. teenage pregnancy, Children and Adolescent Mental Health Service (CAMHS), Integrated Youth Support, safeguarding plan.
- **Produce data on smoking and eating habits at ward level** to better understand these behaviours and produce targeted interventions at high risk communities.
- **Develop care pathways** to improve the management of common childhood ailments; this is highlighted by the continued inappropriate use of A&E services.

### **b) Some are less safe than others**

- 173 children were subject to a child protection plan, most of whom lived in the North and South network area. Children from Black or Black British ethnic minorities are over-represented in this category.
- 476 children and young people are in care, the highest concentration being in the North and South Network area.

- In 2007/08 there were 1849 youth victims of crime. This is a 19% reduction from the previous year.

**Key Issues:**

- In 2008/09 following the **Joint Area Review of Safeguarding** in Haringey an **action plan** was produced which will form the improvement plan for the next three years for Stay Safe. The plan sets out some key changes including:
  - Closer working between social workers, police officers and health staff
  - Recruiting and developing top quality staff
  - Putting more resources into safeguarding
  - Improving systems and procedures, including ensuring all child protection plans are realistic, achievable and are explicit about how they will help the child
  - Strengthening the managerial and political supervision of the system
  - A stronger more robust Local Safeguarding Children Board (LSCB)
- There is a need to put in place an effective **protocol** which establishes clear responsibilities for assessing the needs of, and providing support for, **carers aged under 18** including the **period of transition** from Children to Adult Services.
- There is a need to provide **short breaks for families** with children with complex needs including autism and health needs.
- A lack of quality **culturally appropriate accommodation sites** for Traveller and Gypsy families.
- Agencies need to be able to identify and support girls who are potentially at risk of **forced marriage, honour based violence, female genital mutilation and trafficking**.
- There are no services for children who **witness domestic violence**.
- There is no **assessment tool** to identify the needs of children affected by domestic violence
- There is no clear recognition of the **impact of domestic violence on parenting**
- Attention needs to be given to assessing and reviewing the **needs of children accommodated in Refuges** in Haringey, particularly where the Refuge does not employ a specialist children's worker.

- Domestic violence is primarily seen as a child protection issue. More focus needs to be given to **prevention work, particularly in schools** as part of the personal, social and health education (PHSE) agenda **and in Children's Centres** as a venue for community based domestic violence awareness initiatives.
- **There is no single locus** for the collection of domestic violence data
- There is a need to recognise **teenage partner violence** as a significant child welfare problem
- Young people's preferred **self-seeking strategies**, which favour peers, need to be acknowledged in school-based intervention programmes aimed at reducing teenage partner violence.
- The **role of adult school learning mentors** needs to be recognised, as identified by young people, as a source of appropriate support and advice for those experiencing teenage partner violence.
- Child welfare professionals working with adolescents, especially those who have experienced family or peer violence, need to ensure their **experiences of partner violence are also addressed**. As teenage partner abuse is rarely reported to adults it is important that **professionals routinely include this in their overall assessment of young people's needs**.

**c) Some may find it harder to enjoy and achieve**

*At Foundation Stage:*

- Nearly two thirds of the bottom 20% of the Foundation Stage Profile (FSP) cohort are boys.

*At Key Stage 1:*

- 38% of White UK pupils attain L3+ in reading compared to 12% African Caribbean, 13% African, 2% Turkish, 32% Irish, 29% Nigerian and 25% White Other pupils.

*At Key Stage 2:*

- The attainment of 'mobile' pupils is significantly below 'non mobile' pupils. In English, for example, 63% of mobile pupils attain L4+ compared to 79% of non-mobile pupils.
- 62% of Free School Meal (FSM) pupils obtained English level 4+, compared to 83% of non FSM pupils. Mathematics and science have similar differences.

*At Key Stage 3:*

- The number of low achievers (level 3 and below) has reduced slightly from last year but remains significantly higher than the national. In science, for example, the percentage has decreased from 15.9% to 15.0% (nationally 7%).

#### *Key Stage 4:*

- The percentage of young people achieving at least one qualification at GCSE has improved by 1.1% to 96.0%, but remains below the national which is 98.6%.
- There remain significant differences between ethnic groups in the five+ A\* - C (including English and maths) indicator – 65% of White British pupils, compared to 36% of African pupils, 30% of Caribbean pupils, 27% of Turkish pupils, and 28% Kurdish pupils.
- Mixed White and Caribbean (four pupils) and Black Other (three pupils) are most significantly over-represented in the permanent exclusion data.

#### *Key Issues:*

- There is a need for **Children Centres to target priority groups more effectively** e.g. workless households, lone parents, teenage parents and families with children 0-5 years.
- The percentage of pupils achieving the **Foundation Stage improvement target** (percentage achieving at least 78 points and six+ in all PSE and CLL) **has improved** from 41.2% to 43% but is still below the national of 49%.
- There has been an **improving trend at Key Stages 1 and 2**, but results are **still below national levels**.
- There are **significant differences between the results of the West Network in comparison with the North and South Networks**. These differences are also linked to differences between pupils eligible for free school meals and pupils not eligible. The differences in attainment are particularly marked at the higher levels of each key stage (including the Foundation Stage).
- There has been a **good trend in reducing the percentage of low attaining pupils**, but the percentage of such pupils is still above national figures and needs to be reduced further.
- The number of **schools where fewer than 55% of pupils attain both English and maths level 4 or above at Key Stage 2 has been reducing** but is still too high at 13 schools.
- Ofsted primary school reports show a higher percentage of outstanding schools than national. The number of satisfactory schools, however, is too high. We need to **ensure more schools move from satisfactory to good and outstanding**.
- **Key Stage 3 results are significantly below national** particularly in maths and science.

- We have been successful in **driving down the number of schools below the GCSE threshold of 30% five+ A\*-C grades** (including English and maths) from six in 2003 to one in 2009. We need to ensure that no schools are below that threshold and continue to improve attainment at GCSE.
- There are **too many pupils who leave school with no GCSE qualifications** at all.
- The **attainment of many minority ethnic groups has been improving** at all key stages. The gap, however, between Black Caribbean, Black African, Kurdish, Turkish and Other White pupils with their White British peers is still too wide and needs to be a constant focus.
- **The attainment gap between pupils eligible/not eligible for free school meals** is similar to national at KS2 and below national at GCSE. The gaps, however, are still significant and need to be consistently reduced.
- A higher proportion of pupils than nationally say that they **do not have someone to talk to when they are worried about something** (TellUs 3 survey).
- A higher proportion of pupils than nationally say that **they have not participated in any group activity led by an adult outside school lessons** (TellUs 3 survey).
- **The attainment of Looked After Children in Haringey is generally above their national peers**, but remains significantly below the overall levels of Haringey pupils.
- Overall **attainment at Key Stage 5 needs to be improved**, particularly the total average point score for each student.

**d) Some may find it harder to make a positive contribution**

- There are over 250 care leavers. Care leavers are much less likely to go into higher and further education and much more likely to have health problems, be unemployed or homeless than their peers.
- There are 723 children and young people providing care to members of their family.
- There are 198 unaccompanied asylum seeking children.

### **Key Issues:**

- Our children and young people, their parents and the Children's Trust are concerned about the **negative portrayal of young people in the media** and the impact this may have on their emotional well-being and their sense of belonging and ownership within their communities.
- There needs to be **greater consistency of practice** across the Council in demonstrating **to young people how they have influenced decisions**.
- We need to **develop strategies** for children and young people who do not engage in mainstream activities.
- As corporate parents, it is essential that we fulfil our responsibilities by developing a range of mechanisms to **listen to the voice of children in care** so that their rights as a child are upheld and their well-being is improved.
- Our young people have identified '**sex and relationships**' as a continuing issue that they wish to see better addressed.
- The 'Tellus Survey' 2008 indicated that, compared to their peers across London, **far fewer Haringey children participated in activities with an adult after school**.
- The Youth Council has identified as a **key priority** "**improving understanding and unity between different groups of young people**".
- The Tellus Survey indicated that a higher proportion of children and young people than the national average were **worried about crime**.

### **e) Some may find it harder to achieve economic well being**

- 29 Haringey Lower Super Output Areas (LSOAs) (approx 20%) are amongst the 10% most deprived in the country.
- Young people aged 16-24 account for 14% of all people in the borough claiming out of work benefits.
- There are 6460 lone parents claiming Income Support, which accounts for 4.1% of the working age population.
- 631 people with dependant children are claiming Job Seekers Allowance.
- 36.4% of children live in families who are in receipt of out of work benefits.
- Bruce Grove (8.8% of total NEETS), Noel Park and White Hart Lane wards (both at 8.0%) have the highest percentage of young people Not in Education, Employment or Training (NEETS).
- Approximately 7500 children are homeless and living in temporary accommodation.

- 70% of households accepted as being unintentionally homeless and in priority need have dependent child living with them.
- Young people, aged 16–24, account for just over a third of the single homeless people living in temporary accommodation.

**Key Issues:**

- **Worklessness** remains a persistent problem in Haringey.
- The **recession** is beginning to have a major impact on the labour market. From May 2008 to February 2009 the number of people claiming Job Seekers Allowance in Haringey increased by 1244 (31.8%). Some 42% of this increase can be attributed to young people aged 16-24.
- In the year to June 2008, 66.5% of Haringey's working age population was in employment, lower than both the London and England averages of 70.6% and 74.5% respectively. This **employment rate** ranks Haringey amongst the bottom 10% local authority areas in England.
- Young people aged 16-24 account for 14% of all people in the borough claiming **out of work benefits**.
- **Low skills and low educational attainment** in Haringey are a significant barrier facing young people accessing sustainable employment.
- The current economic climate will make it more challenging for young people to access employment opportunities due to **increasing unemployment and falling vacancies**.
- The recession will cause a rise in the number of **children living in poverty**.
- There are 54,000 children in Haringey of which 43,500 belong to a **family in receipt of Tax Credits**. Thirty seven per cent of children in Haringey belong to a family which receives Child Tax Credit where the claimant is Out of Work. A further 36% belong to a family receiving more than the basic rate of Child Tax Credit, meaning that someone in the family is working, but has a low income. This is a clear indication of poverty in Haringey, as these families are unable to fully support themselves.
- There is a need to **address child care issues** in the borough.
- There is a large **unmet demand for cycling at Primary School level** with almost 30% of young people in this age range expressing a desire to cycle to school.

- There is a need to **tackle homelessness** and reduce the number of **households in temporary accommodation.**

## Summary of issues by Children's Network Area

Every Child Matters Outcomes	Children's Network North	Children's Network South	Children's Network West
<b>Be Healthy</b>	<ul style="list-style-type: none"> <li>▪ <b>Health deprivation and disability:</b> In 2007, nearly 8% of CN North was in the 10% most deprived in the country. Most of this falls in the Northumberland Park ward.</li> <li>▪ <b>Low birth weight babies:</b> In 2007, 9.6% of all babies born in the North Network area were low birth weight. Highest proportion came from the Northumberland Park ward (11.2%).</li> <li>▪ <b>Obesity (reception year):</b> In 2008, 12.5% of all reception year children living in the North Network were obese. Highest proportion came from the Noel Park Ward (17%).</li> <li>▪ <b>Obesity (year 6):</b> In 2008, 26.4% of all year 6 children living in the North Network were classified as obese. Highest proportion came from the Bounds Green ward (29.8%).</li> <li>▪ <b>Teenage pregnancy:</b> In 2007, the ward with the highest rate was Bounds Green (107.1 per 1000).</li> <li>▪ <b>Additional needs (aged 18–25 years):</b> There are 34.3% of all young people with additional mental health needs; 38.4% of young people with additional learning disabilities and 33.3% of young people with physical and sensory disability and frailty living in the North Network area.</li> </ul>	<ul style="list-style-type: none"> <li>▪ <b>Health deprivation and disability:</b> In 2007, nearly 4% of CN South was in the 10% most deprived in the country. These are two small areas of Bruce Grove and Tottenham Green.</li> <li>▪ <b>Low birth weight babies:</b> In 2007, 8.3% of all babies born in the South Network area were low birth weight. Highest proportion came from the West Green ward (10.6%).</li> <li>▪ <b>Obesity (reception year):</b> In 2008, 12.4% of all reception year children living in the South Network were obese. Highest proportion came from the Tottenham Hale Ward (17.3%).</li> <li>▪ <b>Obesity (year 6):</b> In 2008, 28.2% of all year 6 children living in the South Network were obese. Highest proportion came from the Tottenham Hale ward (33.2%).</li> <li>▪ <b>Teenage pregnancy:</b> In 2007, the ward with the highest rate was Bruce Grove (131.6 per 1000).</li> <li>▪ <b>Additional needs (aged 18–25 years):</b> There are 40.6% of all young people with additional mental health needs, 50% of young people with additional learning disabilities and 57.6% of young people with physical and sensory disability and frailty living in the South Network area.</li> </ul>	<ul style="list-style-type: none"> <li>▪ <b>Health deprivation and disability:</b> In 2007, 2% of CN West was in the 10% most deprived in the country. This is one super output area that is in the Hornsey ward.</li> <li>▪ <b>Low birth weight babies:</b> In 2007, the highest proportion from this Network came from the Fortis Green ward (7.9%).</li> <li>▪ <b>Obesity (reception year):</b> In 2008, 7.2% of all reception year children living in the West Network were classified as obese. This has decreased 2% since 2007. The highest proportion came from the Hornsey Ward (13.2%).</li> <li>▪ <b>Obesity (year 6):</b> In 2008, 16.1% of all year 6 children living in the West Network were classified as obese. Highest proportion came from Hornsey ward (20.2%).</li> <li>▪ <b>Teenage pregnancy:</b> In 2007, the highest rate was in Hornsey ward (66.8 per 1000).</li> <li>▪ <b>Additional needs (aged 18–25 years):</b> There are 25% of all young people with additional mental health needs; 11.6% of young people with additional learning disabilities and 9.1% of young people with physical and sensory disability and frailty living in the West Network area.</li> </ul>
<b>Stay Safe</b>	<ul style="list-style-type: none"> <li>▪ <b>Crime:</b> During April 2008-Feb 2009 there were hotspots of youth crime in Noel Park and Northumberland Park.</li> <li>▪ <b>YOS clients:</b> 32.4% of YOS clients live in the North Children's Network as at 31 December 2008.</li> <li>▪ <b>Children in care:</b> At the end of Feb 2009, 43% of children in care lived in the North Network.</li> <li>▪ <b>Child protection plan:</b> At the end of Feb 2009, 37% of children subject to a child protection plan</li> </ul>	<ul style="list-style-type: none"> <li>▪ <b>Crime:</b> During April 2008-Feb 2009 there were hotspots of youth crime in West Green, Bruce Grove, Tottenham Hale and Seven Sisters.</li> <li>▪ <b>YOS clients:</b> 51.5% of all YOS clients live in the South.</li> <li>▪ <b>Children in care:</b> At the end of Feb 2009, 40% of children in care lived in the South Network.</li> <li>▪ <b>Child protection plan:</b> At the end of Feb 2009, 35.3% of children subject to a child protection</li> </ul>	<ul style="list-style-type: none"> <li>▪ <b>Crime:</b> During April 2008-Feb 2009 there were hotspots of youth crime in Alexandra, Muswell Hill, Hornsey and Crouch End.</li> <li>▪ <b>YOS clients:</b> 18.9% of YOS client live in the West. Least number of YOS clients are in Highgate, Fortis Green &amp; Alexandra.</li> <li>▪ <b>Children in care:</b> At the end of Feb 2009, 14% of children in care lived in the West Network.</li> <li>▪ <b>Child protection plan:</b> At the end of Feb 2009,</li> </ul>

Every Child Matters Outcomes	Children's Network North	Children's Network South	Children's Network West
	<p>lived in the North Network.</p> <ul style="list-style-type: none"> <li>▪ <b>Child protection register:</b> 64 children living in the North were on the child protection register as at Feb 2009.</li> </ul>	<p>plan lived in the South Network area.</p> <ul style="list-style-type: none"> <li>▪ <b>Child protection register:</b> 61 children living in the South were on the child protection register as at Feb 2009.</li> </ul>	<p>15% of children subject to a child protection plan lived in the West.</p> <ul style="list-style-type: none"> <li>▪ <b>Child protection register:</b> 26 children living in the West were on the child protection register as at Feb 2009.</li> </ul>
<b>Enjoy and Achieve</b>	<ul style="list-style-type: none"> <li>▪ <b>Foundation Stage:</b> 35% achieving at least 78 points and 6+ in all PSE and CLL.</li> <li>▪ <b>KS 1:</b> 79% of children achieved Reading Level 2+; 46% achieved Writing level 2B+. Similar to the attainment levels in the South Network, although significantly below the West Network.</li> <li>▪ <b>KS 2:</b> 71% English level 4+; 20% English level 5+; 20% Maths level 5+; 27% Science level 5+. Similar to the attainment levels in the South network, although significantly below the West Network.</li> <li>▪ <b>KS 4:</b> 53% achieving 5+ A*-C; 34% achieving 5+ A*-C including English and maths.</li> </ul>	<ul style="list-style-type: none"> <li>▪ <b>Foundation Stage:</b> 37% achieving at least 78 points and 6+ in all PSE and CLL</li> <li>▪ <b>KS 1:</b> 76% of children achieved Reading Level 2+; 44% achieved Writing level 2B+. Similar to the attainment levels in the North Network, although significantly below the West Network.</li> <li>▪ <b>KS 2:</b> 68% English level 4+; 18% English level 5+; 17% Maths level 5+; 27% Science level 5+. Similar to the attainment levels in the North Network, although significantly below the West Network.</li> <li>▪ <b>KS 4:</b> 58% achieving 5+ A*-C; 37% achieving 5+ A*-C including English and maths.</li> </ul>	<ul style="list-style-type: none"> <li>▪ <b>Foundation Stage:</b> results in the West are significantly better than results in the North and South Networks. The percentage achieving at least 78 points and 6+ in all PSE and CLL was 55%, a gap of between 20-22% points.</li> <li>▪ <b>KS 1:</b> the West outperforms the North and South Networks in all areas. 90% of children achieved Reading Level 2+; 70% achieved Writing level 2B+.</li> <li>▪ <b>KS 2:</b> Significantly outperforms the North and South Networks in all areas. 89% English level 4+; 45% English level 5+; 43% Maths level 5+; 58% Science level 5+.</li> <li>▪ <b>KS 4:</b> the West outperforms the North and South Networks with 69% achieving 5+ A*-C. However, this ranges from 55% in Stroud Green to 87% in Alexandra ward.</li> </ul>
<b>Achieve Economic Wellbeing</b>	<ul style="list-style-type: none"> <li>▪ <b>Employment deprivation:</b> In 2007, nearly 36% of the North was in the 10% most deprived in the country. Lots of this is in Northumberland Park ward which has the highest unemployment rate in London.</li> <li>▪ <b>Barriers to housing and services:</b> In 2007, 5% was in the 10% most deprived in the country. This constitutes two super output areas. One in White Hart Lane and one in Northumberland Park.</li> <li>▪ <b>Income deprivation affecting children:</b> In 2007, nearly 90% of CN North was in the 10% most deprived in the country. The areas that do not fall into this are in Bounds Green Ward.</li> <li>▪ <b>Child poverty:</b> In 2007, 45.9% of the children lived</li> </ul>	<ul style="list-style-type: none"> <li>▪ <b>Employment deprivation:</b> In 2007, 25% of the South was in the 10% most deprived in the country. This is mainly situated in the Tottenham Green and Tottenham Hale wards.</li> <li>▪ <b>Barriers to housing and services:</b> In 2007, 5% was in the 10% most deprived in the country. There are three super output areas in West Green, Tottenham Hale and Tottenham Green.</li> <li>▪ <b>Income deprivation affecting children:</b> In 2007, 75% of CN South was in the 10% most deprived in the country. This features across the whole network, but least in Harringay and West Green wards.</li> <li>▪ <b>Child poverty:</b> In 2007, 41.5% of the children</li> </ul>	<ul style="list-style-type: none"> <li>▪ <b>Employment deprivation:</b> In 2007, 2% of the West network was in the 10% most deprived in the country. This is just one super output area in the Hornsey ward.</li> <li>▪ <b>Barriers to housing and services:</b> In 2007, 2% was in the 10% most deprived in the country. This is just one super output area in the Alexandra ward.</li> <li>▪ <b>Income deprivation affecting children:</b> In 2007, 10% of CN West was in the 10% most deprived in the country. This is mainly situated in a small part of the Hornsey ward.</li> <li>▪ <b>Child poverty:</b> In 2007, 17.6% of the children lived in poverty. Hornsey was the ward with the</li> </ul>

Every Child Matters Outcomes	Children's Network North	Children's Network South	Children's Network West
	<p>in poverty. Northumberland Park was the ward with the highest proportion (50.5%)</p> <ul style="list-style-type: none"> <li>▪ <b>NEETS:</b> In 2008/09, nearly 34% of all Haringey NEETS were in the North network. 8% of all Haringey NEETS were in White Hart Lane ward.</li> <li>▪ <b>Children living in temporary accommodation:</b> In 2008, 1654 children living in the North network were in TA. This is 31.2% of all the Haringey children living in TA. The ward with the highest amount was Woodside (460).</li> <li>▪ <b>Lone parents claiming income support:</b> 38.4% of lone parents living in the North claimed as at August 2008.</li> </ul>	<p>lived in poverty. Tottenham Hale had the highest proportion (47.7%).</p> <ul style="list-style-type: none"> <li>▪ <b>NEETS:</b> In 2008/09, 45% of all Haringey NEETS were in the South Network. 8.8% of all Haringey NEETS were in the Bruce Grove ward.</li> <li>▪ <b>Children living in temporary accommodation:</b> In 2008, 2506 children living in the South network were in TA. This is 47.3% of all the Haringey children living in TA. The ward with the highest amount was Bruce Grove (485).</li> <li>▪ <b>Lone parents claiming income support:</b> 46.9% of lone parents living in the South claimed as at August 2008.</li> </ul>	<p>highest proportion (34.1%).</p> <ul style="list-style-type: none"> <li>▪ <b>NEETS:</b> In 2008/09, 21% of all Haringey NEETS were in the West network. 5.8% of the all Haringey NEETS were in the Hornsey ward.</li> <li>▪ <b>Children living in temporary accommodation:</b> In 2008, 566 children living in the West network were in TA. This is 10.7% of all the Haringey children living in TA. The ward with the highest amount was Hornsey (209).</li> <li>▪ <b>Lone parents claiming income support:</b> 14.7% of lone parents living in the West claimed as at August 2008.</li> </ul>