

# Adoption Support Services in Haringey

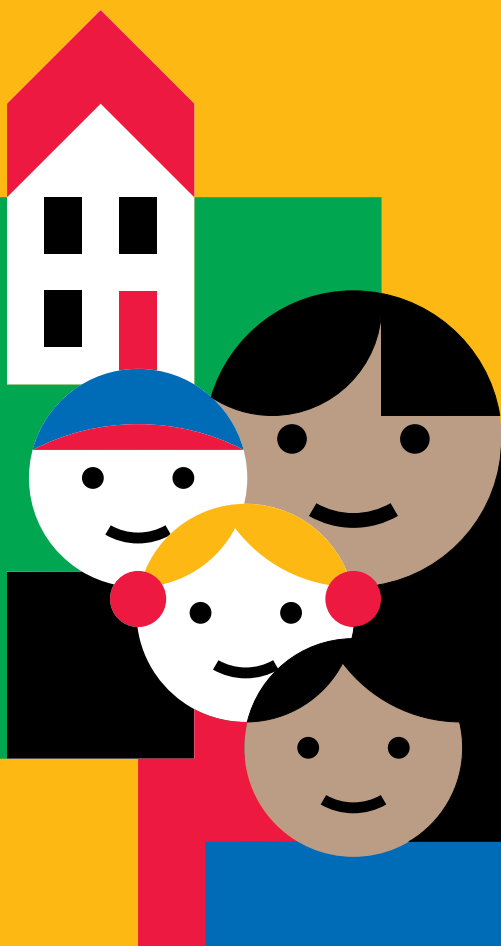
## Information

---

For Adoptive Families  
& Adopted People

---

For Birth Relatives



### Introduction

- 1 What are Adoption Support Services?

### Adoptive Families & Adopted People

- 2 Who can ask for Adoption Support?
- 2 What kind of support is available?

### 3 Adoptive Parents

- 3 Assessment of Adoption Support Needs
- 5 Contact Arrangements
- 6 Support Groups
- 7 Training & Workshops
- 7 Financial Support
- 8 Receiving Information

### 8 Adopted Adults

- 8 Looking for birth records for adopted adults resident in Haringey
- 9 If you know which agency placed you for adoption
- 9 Adopted adults and adoption records
- 11 Intermediary Service
- 12 Adopted children and young people

### Birth Relatives

- 14 Contact arrangements with children placed for adoption by Haringey
- 15 Direct Contact
- 15 Adoption Support Needs Assessment
- 15 If you have no contact with your adopted child and would like to ...
- 16 Tracing adopted children over the age of eighteen
- 17 Intermediary Service
- 17 Support Groups

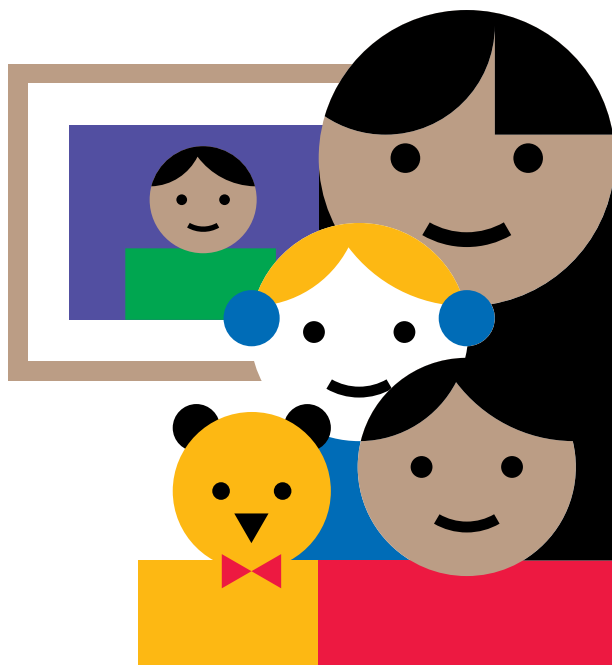
### 18 Useful Organisations

### 22 Useful Reading

### What are Adoption Support Services?

The London Borough of Haringey is an adoption agency. Under the Adoption and Children Act 2002, Adoption Support Regulations (2003) have been introduced that require local authorities to make a range of adoption support services available to meet the needs of people affected by adoption, including children and adults who are adopted, birth relatives, adoptive families, step-parent adopters and inter-country adopters. The Regulations also make provision for the support of contact arrangements between adopted children and their birth relatives.

The Adoption Support Services Adviser (ASSA) is a Team Manager in the Adoption Team and a key point of contact for anyone who needs advice about adoption support.



## Adoptive Families & Adopted People

### Who can ask for Adoption Support?

- > Adoptive families living in Haringey.
- > Adults and young people placed for adoption through Haringey Social Services.
- > Adopted adults living in Haringey who want access to their birth records (even if another adoption agency dealt with your adoption).
- > Haringey residents who are birth relatives of adopted people.

### What kind of support is available?

- > Counselling, advice and information
- > Assessment of Adoption Support Needs
- > Therapeutic Services
- > Support with contact arrangements
- > Support groups for all parties to adoption
- > Training & Workshops
- > Financial Support

### Adoptive Parents

If your adopted son or daughter is under 18 years old, and you live in Haringey, you may ask for an assessment of your adoption support needs if:

- 1 Haringey dealt with the adoption, or
- 2 You adopted through another adoption agency, local authority or have adopted from overseas and the adoption order was granted over three years ago.

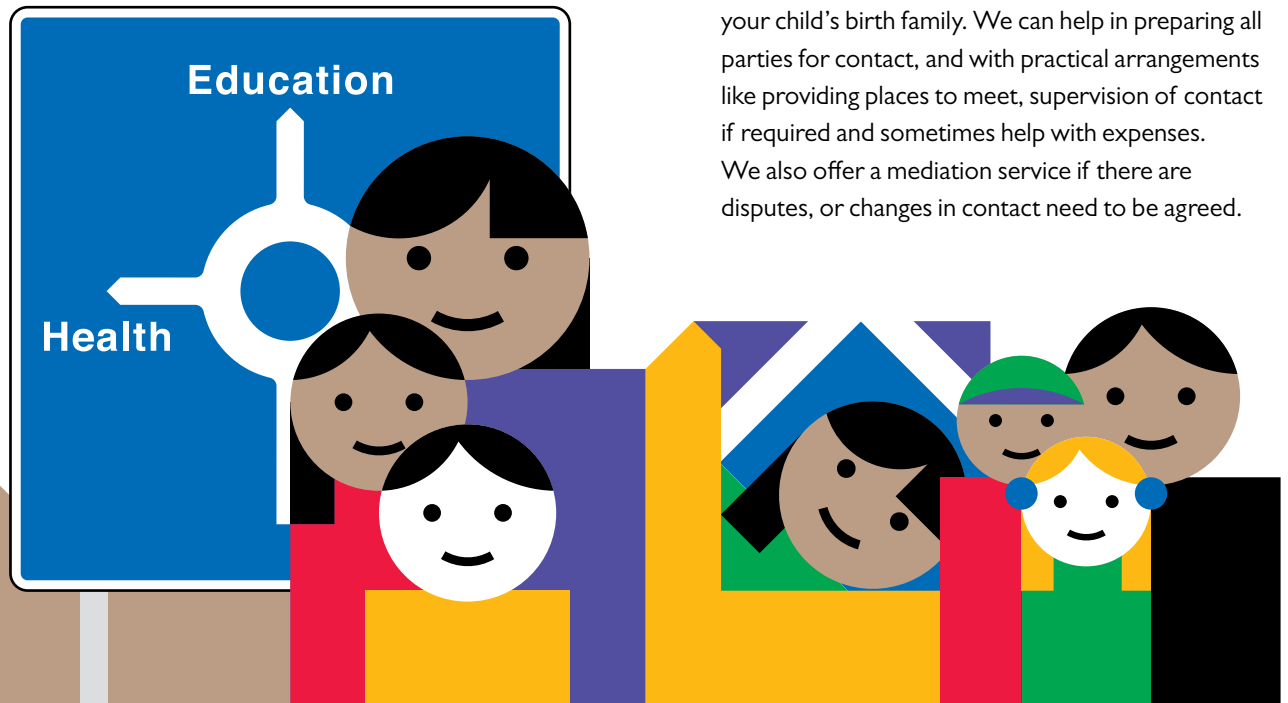
If you adopted through Haringey and live in another Local Authority, we will provide adoption support for three years after the adoption order is granted. Beyond three years, you should approach the Local Authority in which you live to ask for support. We would, of course, be happy to assist you in making contact with the correct person in your local authority.

### Assessment of Adoption Support Needs

We recognise that adoption is a lifelong commitment and we aim to support new and existing families, before, during and after adoption. Under the Adoption Support Regulations (2003) you are entitled to ask for an Assessment of your Adoption Support Needs. This assessment will explore your family's circumstances to identify your needs. Many requests for advice or support may be dealt with very quickly and families can be signposted to appropriate services. There are some children and families with more complex needs who may need a more detailed

assessment before a decision is made about how to provide support. Following assessment, an adoption support plan is written with the details of support that may be provided. This might include health, education or therapeutic services. There is no automatic entitlement to services. All Local Authorities must act reasonably in deciding whether to provide services following an assessment.

*To request an Adoption Support Assessment, please write, telephone or email the Adoption Support Service at the address or telephone number at the back of this booklet. You may expect a response to your request within 5 working days after we receive it.*



## Contact Arrangements

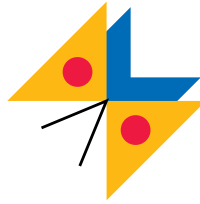
All contact arrangements are usually agreed before an Adoption Order is made, with a signed agreement outlining the type and frequency of contact and with whom. There are different types of contact:

### > LETTERBOX CONTACT

Enabling indirect contact to be maintained between adopted children and their birth families through the exchange of written information between you and your child's birth relatives. This could include photographs, birthday cards and newsletters. This is a confidential service which is managed by the Adoption Support Service in Haringey.

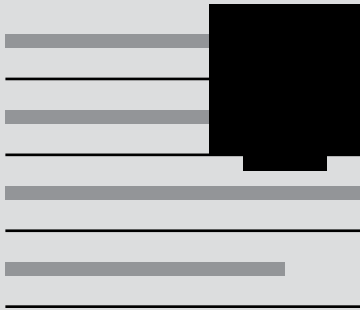
### > DIRECT CONTACT

This is face to face contact between your family and your child's birth family. We can help in preparing all parties for contact, and with practical arrangements like providing places to meet, supervision of contact if required and sometimes help with expenses. We also offer a mediation service if there are disputes, or changes in contact need to be agreed.



## Support Groups

Haringey Adoption Support Service is in the process of setting up a Support Group for adoptive parents living locally. Parents who are members of Adoption UK can also access regular support groups via the local North/North-West London Group. British Agencies for Adoption and Fostering (BAAF) also runs a support group for Black adoptive parents. *Please refer to contact details at the back of this booklet.*



## Training & Workshops

The Post Adoption Centre (PAC) runs a programme of training and workshops about all aspects of adoption. We would be happy to provide further information about the range of courses as well as the charges. Adoption UK runs training and workshops about a range of adoption issues. Haringey is a member of The North London Adoption Consortium and refers adoptive parents to training opportunities sponsored by the consortium. *Please refer to contact details at the back of this booklet.*

## Financial Support

Following an Assessment of your Adoption Support Needs, financial support may be agreed depending on the specific needs of your child. This may be in the form of a lump sum payment, a series of lump sums or ongoing regular payments. All ongoing regular payments are reviewed annually to take into account any changes in household income and expenses. Financial support paid to adoptive families is exempt from tax and is disregarded when calculating eligibility for tax credits and welfare benefits. Haringey applies a means test when making financial payments. The provision of financial support is not an automatic entitlement. The Adoption Support Social Worker will look at your finances with you and help you to find out if you are entitled to any tax credits of other welfare benefits.

*Please see separate leaflet about financial support.*

## Receiving information

Adoptive parents receive regular mailings through the year to advise about workshops, seminars and other important events that might be of interest. If you are an adoptive parent living in Haringey and do not receive this, please contact us at the address at the address at the back of this booklet.

*If you do not wish to receive information, please let us know.*

## Adopted Adults

### Looking for birth records for adopted adults living in Haringey

If you are just beginning to think about looking for your birth records and don't know where to start, you can talk to us on the telephone and we will be happy to advise you about the steps you need to take.

If you are a Haringey resident and you were adopted before November 1975, and have no information about your birth details nor the agency that placed you for adoption, you will need to apply to the General Registrar's Office (GRO) for a copy of your birth record. The GRO holds information on all adoption records and will be able to help you. You will be asked to attend a counselling interview before any details are given to you. This interview will help you to understand more about accessing your birth details and will support you through this

process. You may choose to have your interview with the Adoption Support Social Worker in Haringey. All referrals from the General Register Office are dealt with promptly and a counselling interview will be offered to you within 4 to 6 weeks of receiving the referral from the General Register Office.

Although it is not compulsory, we also offer a counselling interview to adults adopted after November 1975 to ensure that they are best supported through this process. Anyone adopted after 30 December 2005 must apply to their adoption agency for access to information, including birth records counselling. There is no legal requirement to undergo counselling although it is recommended. *Please see the list of organisations and addresses at the back of this booklet.*

### If you know which agency placed you for adoption

If you are a Haringey resident, and were adopted through another agency or local authority, you can choose whether to receive your counselling interview in Haringey or the other agency.

### Adopted Adults and adoption records

Adopted adults are entitled to have access to their adoption records from the age of 18 years. Like all Adoption Agencies, Haringey is legally required to keep adoption records for 100 years. If you are 18 or over, were adopted through Haringey and still live in the borough, and you want to know more about

the circumstances of your adoption, the Adoption Support Service will be able to help and advise you. If you were adopted through Haringey and now live outside the borough, we will work with your current local authority to help you.

Your adoption record may contain sensitive information about the circumstances of your adoption. Hearing about your past, may provoke emotions that make you feel anxious, excited or scared. We will support you when you read information from your records and take things at your pace. Our role is to support and advise you and discuss the right course of action for you. You may also wish to bring a friend to appointments to support you.

If you want to access your records, you need to write to the Adoption Support Service at the address at the back of this booklet, giving your adoptive name, date of birth, and your birth name if you know it. We will need proof of your identity before we access confidential records. This is a very popular service and there is a very short waiting list to which your name will be added.

If you are a Haringey resident and know that another agency handled your adoption, you can contact them direct. You may choose to ask a Social Worker from Haringey's Adoption Support Service or the other agency, to support you.

## **Intermediary Service**

If you are over 18 and were adopted before 30 December 2005, you may request a regulated intermediary service. Research shows that approaches to adopted people and birth relatives are much more successful if made through an intermediary. Reunions can be very emotionally demanding. We are available if you would like to discuss your feelings or concerns.

We will try to trace your birth relatives and act as an intermediary. We will not be able to divulge new information without the consent of your birth relative. If we have seen you within the last six months for birth records counselling, the Adoption Support Social Worker will contact your birth relatives at their last known address. If it is longer than six months since you were in touch with us, we will have to treat your request to contact birth relatives as a new referral and your name will be placed on our waiting list.

If you have traced a birth relative and would like help in approaching them we are able to offer you an intermediary service. If you do not wish any contact to be made with you by a birth relative, you may register a 'qualified' or 'absolute' veto with the agency that dealt with your adoption. You may also register a wish for 'no contact' on the General Registrar's Adoption Contact Register. Counselling support is available from the Adoption Support Service. We will also put you in touch with agencies

that can help you such as NORCAP (National Organisation for Counselling of Adoptees and Parents) or the Family Records Centre.

*Please write to us giving details and proof of identity as specified on page 10.*

### **Adopted children and young people**

If you are under 18, you are entitled to ask for an Assessment of your Adoption Support Needs. You might wish to do this if you were dissatisfied with contact arrangements for example, have difficulties within your adoptive family or wish to discuss something about your adoption. If you want access to your birth records, we suggest that you discuss this with your adoptive parents. When you are 18 you will be entitled to see your adoption file.

*Write, telephone or email the Adoption Support Service at the address given at the end of this booklet.*



## Birth Relatives

Haringey Adoption Support Service works with birth parents, brothers and sisters, grandparents, aunts and uncles who have been separated from their relatives through adoption.

### **Contact arrangements with children placed for adoption by Haringey**

All contact arrangements should be agreed before your child is adopted and the frequency, and type of contact and who is involved will be confirmed in writing.

There are two types of contact arrangements:

#### > **INDIRECT LETTERBOX CONTACT**

birth and adoptive families share information about the child by post. This can include photographs, birthday cards and letters.

#### > **DIRECT CONTACT**

You meet your child and their new family from time to time. We can provide places to meet, supervisors who will help the meeting go well and financial help with travelling expenses if you need it. If there are disputes or changes in contact we offer a mediation service.

If you have a written agreement for a letterbox exchange with an adopted child and need help in writing a letter you can contact the Adoption Support Service for guidance. There is no waiting list for this service. If you have not received your expected letter or photograph, you can contact the Letterbox Co-ordinator who will follow this up on your behalf.

If any mail cannot be forwarded for any reason (if you or the adopted family have moved) it will be held confidentially on a letterbox file in Haringey. Please ensure that you keep us informed of any change of address.

### **Direct Contact**

If you have an agreement for direct contact with an adopted child which involves the Adoption Support Service, they will contact you to make the necessary arrangements about the date, place and time that the contact is due to take place.

### **Adoption Support Needs Assessment**

If you are a birth relative of a child who has been placed for adoption, you can ask for an Assessment of your Adoption Support Needs to consider any contact arrangements that you have with the adopted child.

### **If you have no contact with your adopted child and would like to...**

You can contact the Adoption Support Service and give them the names and dates of birth of the children with whom you would like contact. The Adoption Support Social Worker will look at information in the child/childrens' adoption files before making contact with the adoptive parents at their last known address.

It may not be possible to make contact with the adoptive family if they have moved or do not reply

to letters or phone calls. Adoptive families are only obliged to maintain contact with birth family members through the Local Authority if the judge made a Contact Order when the Adoption Order was granted. If the adoptive family does not agree to contact, you can send letters, cards and photographs which will be kept on the child's file. The child will receive these if he or she decides to access their birth records after the age of 18.

### **Tracing adopted children over the age of eighteen**

Haringey Adoption Support Service will assist you in tracing and support you through this process. We will work with any other Adoption Support Agency, Adoption Agency, Local Authority or the General Registrar's Office to assist you in your search.

We will provide you with information about contact registers, and can put you in touch with agencies such as National Organisation for the Counselling Adoptees and Parents (NORCAP) and the Natural Parents Network.

### **Intermediary Service**

If your adopted son or daughter has been traced, we are able to offer you an intermediary service to help you in approaching them. The intermediary will be a Social Worker from the Adoption Support Service who will be able to obtain information about your son's or daughter's adoption and will act as an independent third person to help you make contact with them. Research shows that approaches to adopted people and birth relatives, are much more successful if made through an intermediary. Reunions can be very emotionally demanding. We offer a service if you would like to discuss your feelings or concerns.

### **Support Groups**

Haringey does not currently run support groups for birth relatives. We currently refer birth mothers to a support group run by the Post Adoption Centre which is based in Kentish Town, North West London. If you would like information about support groups please contact the Adoption Support Service who will try to locate a group for you.

*Please write to Adoption Support Services at the address at the end of this booklet.*



Please contact the Adoption Support Services Adviser (ASSA) and the Adoption Support Service at:

### **Haringey Adoption Service**

40 Cumberland Road, Wood Green  
London N22 7SG

**020 8489 3309**

[www.haringey.gov.uk](http://www.haringey.gov.uk)

### **The General Register Offices for England & Wales**

Adoption Contact Register

ONS (Adoptions Section)

The General Register Office

Smedley Hydro, Trafalgar Road, Southport

Merseyside PR8 2HH

**0151 471 4830**

*The General Register Office (GRO) forms part of the Office for National Statistics (ONS) – an independent government body, which produces regular analysis of social, economic and business information.*

### **The General Register Office for Scotland**

New Register House, Edinburgh EH1 3YT

**0131 334 0380**

[www.gro-scotland.gov.uk](http://www.gro-scotland.gov.uk)

### **The General Register Office for Northern Ireland**

The Registrar General, Oxford House

49-55 Chichester Street, Belfast BT1 4HL

**028 9025 2000**

[www.groni.gov.uk](http://www.groni.gov.uk)

### **PAC**

(Post Adoption Centre)

5 Torriano Mews, Torriano Avenue, London NW5 2RZ

**020 7284 0555**

### **Advice Line**

**0870 777 2197** (local rate)

10am - 1pm (Monday, Tuesday, Wednesday & Friday)

5.30pm - 7.30pm (Thursday)

[www.postadoptioncentre.org.uk](http://www.postadoptioncentre.org.uk)

*Offers a confidential specialist advice service, counselling and family work for anyone who has been involved with adoption.*

### **BAAF**

(British Agencies for Adoption & Fostering)

Skyline House, 200 Union Street, London SE1 0LX

**020 7593 2000**

### **Adoption UK**

Manor Farm, Chipping Warden, Banbury

Oxfordshire OX17 1LH

**0870 770 0450** (local rate)

*Helpline open 11am - 4pm (Monday to Friday)*

[www.adoption.uk.org](http://www.adoption.uk.org)

### **Natural Parents Network**

*(send a stamped addressed envelope)*

c/o 11 Green Lane, Garden Suburb, Oldham

Lancashire OL8 3AY

**0161 287 8737** (telephone & fax)

[www.n-p-n.fsnet.co.uk](http://www.n-p-n.fsnet.co.uk)

### London Metropolitan Archive

40 Northampton Road, London EC1R 0HB

**020 7332 3820**

[www.cityoflondon.gov.uk](http://www.cityoflondon.gov.uk)

### AFFA

(Association for Families who have Adopted Abroad)

**01622 755 065**

### Public Record Office

The National Archives

Kew, Richmond, Surrey TW9 4DU

**020 8876 3444**

[www.nationalarchives.gov.uk](http://www.nationalarchives.gov.uk)

### Wills and Divorce Records

First Avenue House, 42-49 High Holborn

London WC1V 6NP

**020 7974 6000**

[www.coursservice.gov.uk](http://www.coursservice.gov.uk)

### The Salvation Army Family Tracing Service

101 Newington Causeway, London SE1 6BN

**020 7367 4747** or **0845 634 4747** (local rate)

[www.salvationarmy.org.uk](http://www.salvationarmy.org.uk)

### Intercountry Adoption Centre

64-66 High Street, Barnet, Hertfordshire EN5 5SJ

**0870 516 8742** (local rate)

**020 8440 5675** (fax)

### NORCAP

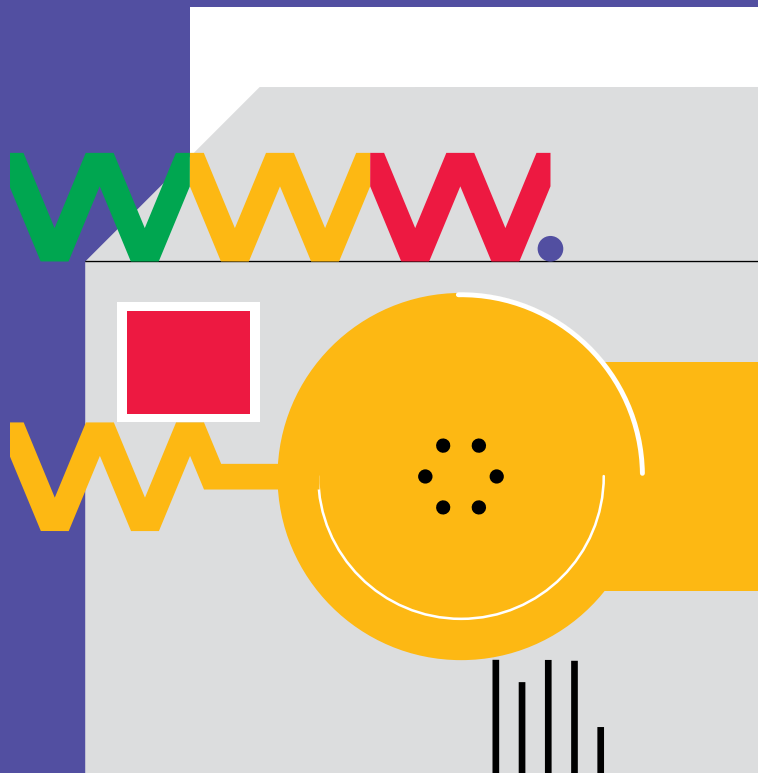
(National Organisation for Counselling Adoptees and their Parents)

12 Church Road, Wheatley, Oxfordshire OX33 1LU

**01865 875 000**

[www.norcap.org.uk](http://www.norcap.org.uk)

*NORCAP is a national organisation that provides support and advice to adopted people, birth relatives of adopted people and adoptive families. It has an Adoption Contact Register, and provides specialist advice and support groups. It has a search room containing records of births, deaths and marriages, for 1904-2000.*



Sol Gordon

**All Families are Different**

ISBN 1573927651

Nancy Verrier

**The Primal Wound**

Understanding the Adopted Child

Baltimore Gateway Press, USA

(1993) | ISBN 0963648004

Joanne Cole & Maxie Chambliss

**How I was Adopted**

(1995) | ISBN 0688 119298

Claudia Jewett

**Helping Children Cope with Separation and Loss**

(1994) | ISBN 1558320512

Julia Feast, Elizabeth Webb, Sue Seabrook & Michael Harwood

**Preparing For Reunion**

ISBN 1899783091

Julia Feast, David Howe & Denise Coster

**Adoption Search and Reunion**

(2000) | ISBN 189978330

David Howe

**Half a Million Women**

Mothers who lose their children by adoption

(1992) | ISBN 0140154159

Leslea Newman

**Heather Has Two Mommies**

(2000) | ISBN 15555835430

Lisa Saffron

**It's a Family Affair**

(Complete Gay & Lesbian Parenting Book)

(2001) | ISBN 1873741626

Maureen Thom & Celia MacIvive

**Bruce's Story**

(1993) | ISBN 0907324274

Hedi Argent

**Related by Adoption**

(2004) | ISBN 1903699398

Catherine Macaskill

**Safe Contact**

(2002) | ISBN 1903855098

Liz Trinder, David Howe & Julia Feast

**The Adoption Reunion Handbook**

(2004) | ISBN 0470094222

Joseph Crumbley

**Transracial Adoption and Foster Care**

ISBN 0878687173

**Love is Not Enough**

Experiences in Transracial Adoption

Infactuation Productions, BBC Video

## 24 Information in your language

For information on Adoption Support Services in your language, please tick the box on the tear-off flap, complete and return the form to the freepost address.

Për informata mbi Shërbimet e Mbështetjes së  
**Albanian** Adoptimit në gjuhën tuaj, ju lutem shënjoni ✓ kutinë, plotësoni dhe ktheni formularin në adresën e mëposhtme me postim falas.

Pour des informations sur les Services de Soutien à  
**French** l'Adoption dans votre langue, veuillez cocher la case, compléter et renvoyer le formulaire à l'adresse au port payé ci-dessous.

Heke hun dixwazin bi zimanê xwe, di derbarî  
**Kurdish** Xizmetên Desteka ji bo Ewladgirtinê de, agahî bigirin, ji kerama xwe qutiyê îşaret bikin, vê formê tijî bikin û vegeînin edresa li jêr. Pûl hewce nake.

Si aad u heshid macluuum la xidhiidha qalabka guryaha  
**Somali** dadka naafada iyo kuwa da'da ah loogu dhajiyo oo ku qoran afkaaga hooyo, fadlan calaamadee sanduuqa kadibna buuxi foomka kuna soo hagaaji cinwaanka hoos ku xusan

Evlat Edinme Destek Servisi hakkında kendi dilinizde  
**Turkish** bilgi istiyorsanız, lütfen kutuyu işaretleyip, formu doldurarak aşağıdaki 'freepost' adresine gönderin.

গ্যাপ্ৰশন সাপোর্ট সার্ভিসেস সম্পর্কে তথ্য আপনার নিজের  
**Bengali** ভাষায় পেতে চাইলে, দয়া করে এই ফর্মের দাপ দিন, এই ফর্মটা ভর্তি করুন আর নিজের ফ্রীপোস্ট ঠিকানার ফেরত পাঠান।

---

NAME

---

ADDRESS

---

**Freepost RLXS - XZGT - UGRJ**

Haringey Council

Translation and Interpretation Services

8th Floor, River Park House

225 High Road, London N22 8HQ

**Haringey Adoption Service**

40 Cumberland Road, Wood Green, London N22 7SG

**020 8489 3309**

[fostering.adoption@haringey.gov.uk](mailto:fostering.adoption@haringey.gov.uk)

[www.haringey.gov.uk](http://www.haringey.gov.uk)

April 2006