

HARINGEY HISTORIC STREET FURNITURE

58 Misc. Grade II K6 Telephone Kiosk North Hill N6, at junction with Hillcrest. TQ282879

Date 1936 - 1980
 Description As above. Rear visible carrying makers panel. Interior refitted.
 Inscription W MACFARLANE & CO LTD
 SARAGEN FOUNDRY GLASGOW
 Setting On tapered concrete base, close to Highpoint.
 Source Listed monuments



59 Misc. K6 Telephone Kiosk High Road Tottenham, TQ336892

Date 1936 - 1980
 Description As above. Interior refitted.
 Inscription T.O.T.E.N.H.A.M
 Setting On pavement close to CONEL main entrance
 Source JALA



60 Misc. K6 Telephone Kiosk Town Hall Approach TQ336894

Date 1936 - 1980
 Description As above. Interior refitted.
 Inscription -
 Setting On pavement to side of Tottenham County School building.
 Source JALA



HARINGEY HISTORIC STREET FURNITURE

61 Misc. Grade II Toilet & Railings Bruce Grove, east of railway bridge, close to junction with High Road N17 TQ337901

Date early C20

Description Ladies and disabled toilets housed in gable-ended, clay-tiled, mock timber-framed 'lodge' structure on glazed brick base. Base extending to basement with curved flight of external steps serving gentlemen's toilets. Frontage, paths and steps linked by painted wrought iron railings. Nice roof vent cupola detail. Several fading signs referring to recent history of council funding politics.

Inscription Various attached signs.

Setting Important site between parade of shops and railway, close to High Road retail centre.

Source Listed monuments



62 Misc. - 2 manhole covers Nr Haringey station Location not identified

Date 1867-1905

Description 1867-94 (Hornsey Local Board) & 1905 (Borough of Hornsey) cast iron manhole covers

Inscription -

Setting Unknown

Source *Ibid.*

HARINGEY HISTORIC STREET FURNITURE

63 Misc. - Manhole cover Crouch Hill Location not identified

Date 1890s

Description Cast iron manhole access cover and frame. Islington's electric undertaking happened between 1892 and 1948.

Inscription "Vestry of St Mary, Islington, Electric Light".

Setting Unknown.

Source *Ibid.*

64 Misc. - WWII Warden's post Wood Green Common, opposite Western Road TQ306902

Date c.1939

Description Fletton brick bunker with concrete capping, and attached lobby with later concrete lid. Small windows blocked.

Inscription None.

Setting Inconspicuously located at rear of Common built into perimeter railings.

Source -



65 Misc. - WWII Warden's post Junction of Palace Gate Road and Alexandra Park Road TQ298904

Date c.1939

Description Fletton brick bunker with concrete capping, and attached lobby with later concrete lid. Small windows partially blocked.

Inscription None.

Setting Occupying acute corner of residential junction.

Source -



HARINGEY HISTORIC STREET FURNITURE

66 Misc. - Tank blocks On railway embankment to side of Bedford Road N22 TQ302905

Date c.1939
 Description Six blocks stepping down embankment (to prevent outflanking of railway defences?) Approx 1050x840x1050 high, constructed of 3" clinker blockwork, filled with concrete.
 Inscription None.
 Setting Set within undergrowth of railway embankment
 Source -



67 Bollards. - Bollards/gun posts Michael's Terrace Location not identified

Date c.1939
 Description Awaits identification
 Inscription -
 Setting -
 Source -

68 Misc. - Sculpture High Road, Tottenham, south of junction with Somerset Road TQ338896

Date c.1983
 Description Portland stone sculpture of vaguely human form(s) set on blue engineering brick base, with mortared joint.
 Inscription "EMERGING FORM" BY VANESSA POMEROY (PURCHASED 1983)
 Setting Poorly located in landscaped area close to public convenience.
 Source -



HARINGEY HISTORIC STREET FURNITURE

69 Misc. - Stone tablet On front elevation 797 High Road Tottenham TQ338914

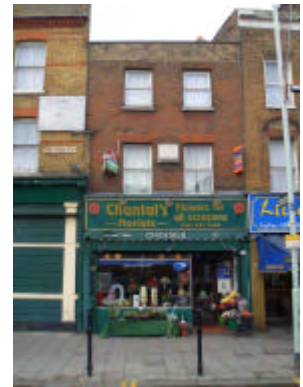
Date 1829

Description Stone tablet supported on bracketed stone bearer, inscribed MARKET PLACE 1829. On 1st floor level of building with fine brickwork frontage and uPVC windows.

Inscription MARKET PLACE 1829

Setting Attached to privately owned property.

Source -



70 Postal - Pillar Box Park Road at junction with Shanklin Road, N8 TQ299885

Date 1887-1902

Description B pattern, free-standing cylinder type of cast iron, with high aperture and toothed cap, carrying VR cipher

Inscription VR
A HANDYSI??E Co Ld? DERBY & LONDON

Setting At edge of pavement.

Source JALA



71 Postal - Pillar Box Muswell Road, N10 at junction with Elms Avenue TQ288899

Date 1887-1902

Description B pattern, free-standing cylinder type post box of cast iron, as above

Inscription VR
A HANDYSI??E Co Ld? DERBY & LONDON

Setting At edge of pavement.

Source JALA



HARINGEY HISTORIC STREET FURNITURE

72 Postal - Pillar Box Outside Nos.136/139 High Road, Tottenham TQ336884

Date pre 1952
 Description Single pillar box with GR cipher and crown on front. Fitted with side-mounted stamp dispenser.
 Inscription α GR
 POST OFFICE
 Setting At edge of pavement.
 Source JALA



73 Postal - Pillar Box Hampstead Lane at junction with Courtenay Avenue, N6 TQ270876

Date from 1978
 Description Plain cast iron cylinder of clean contemporary design known as Type K.
 Inscription EIIR
 Setting At edge of pavement.
 Source JALA



74 Misc. - Paving Unit Junction of Elmfield Avenue and Tottenham Lane TQ303887

Date C20th
 Description Coarse aggregate concrete paving unit with ABERDEEN ADAMANT in brass lettering
 Inscription ABERDEEN ADAMANT
 Setting Part of pavement area with several similar but plain units.
 Source JALA



HARINGEY HISTORIC STREET FURNITURE

75 Misc. Grade II New River Tunnel North Entrance On private land to north of Myddleton Road TQ30549142

Date Mid C19th
 Description North entrance arch to tunnel of stock brick with raised parapet and curved abutments ending in square piers. Stone copings. Crude bridge crossing against arch offering platform for vandalism.
 Inscription None.
 Setting Setting disfigured by TW security railings and bridge against face of arch.
 Source DCMS



76 Misc. New River Tunnel South Entrance Park Avenue, close to junction with Station Road TQ304904

Date Mid C19th
 Description South entrance arch to tunnel of stock brick with parapet and curved abutments ending in square piers. Stone copings.
 Inscription None.
 Setting Lovely setting; aqueduct flanked by good run of railings to west side
 Source JALA



77 Misc. - Column Vents Cross Monument Muswell Hill close to Rookfield Avenue, N10 TQ291894

Date Late 19thC or early C20
 Description Pair of cast iron vent columns with decorative bases and caps. Function unknown.
 Inscription None.
 Setting At edge of road.
 Source JALA



Jonathan A Law & Associates
 Studio 20
 436 Essex Road
 London N1 3QP

March 2006