

Shqip



Nëse e doni në gjuhën tuaj këtë letër paralajmërimi të punëve, ju lutem shënjoni ✓ kutinë, plotësoni emrin dhe adresën tuaj dhe dërgojeni formularin tek adresa e mëposhtme me postim falas.

Kurdî Kurmancî



Ev name ji bo daxuyanîya kar e. Heke hun wê bi zimanê xwe dixwazin, ji kerema xwe qutîkê îşaret bikin, nav û navnîşana xwe binivîsin, û formê ji navnîşana posta bêpere ya jêrîn re bişînin.

বাংলা



কাজকর্মের বিজ্ঞপ্তি দেওয়ার এই চিঠি আপনি যদি আপনার নিজের ভাষায় পেতে চান তাহলে বাক্সে টিক্ চিহ্ন দিন, আপনার নাম ও ঠিকানা লেখার জায়গা পূরণ করুন এবং নিচের ফ্রীপোস্ট বা বিনা ডাকমাশুলের ঠিকানায় এই ফর্ম পাঠিয়ে দিন।

Soomaali



Haddii aad jeceshahay warqqadan kugu wargalinaysa shaqo laguugu soo turjumo afkaaga hooyo, fadlan calaamadee sanduuqa buuxina foomka kadibna dib ugu soo dir cinwaanka hoos ku xusan. Dib u soo dirista foomku lacag laagama baahna.

Français



Pour obtenir cette lettre d'avis de travaux dans votre langue, veuillez cocher la case, compléter votre nom et votre adresse et renvoyer le coupon, sans affranchir, à l'adresse ci-dessous.

Türkçe



Yapılacak çalışmalara ilişkin uyarı içeren bu mektubu kendi dilinizde istiyorsanız, kareyi işaretleyip isim ve adresinizi yazarak formu aşağıda verilen, posta ücreti gerektirmeyen adrese gönderiniz.

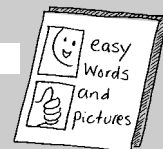
Please tell us if you would like a copy of this Works Notice letter in another language that is not listed above or in any of the following formats, and send the form to the Freepost address below.

In large print

On audio tape

In Braille

In another language, please state:



Name: Tel:

Address:

Email:

Please return to: Freepost RLXS-XZGT-UGRJ, Haringey Council,
Translation and Interpretation Services, 8th Floor, River Park House, 225 High Road, London N22 8HQ

Haringey Council offers this translating and interpreting service to Haringey residents. We can translate this document into one language per resident ONLY.



Haringey Council uses recycled paper as part of its commitment to improving the environment

Work Notice Letter

Translation panel published by Haringey Council's Communications Unit 17852 • 03/07



10 February 2011

Statutory Notification

Ellenborough Court N22: Proposed 'Stop & Shop' Scheme

Dear Resident or Trader,

I write to inform you of our intention to improve the availability of parking space for shoppers and visitors to Ellenborough Court. We plan to improve short-stay parking for the benefit of both shoppers and businesses by undertaking the following measures:

- Introducing a 'Stop and Shop' scheme in the road, with pay and display parking bays offering 2 hours parking Monday-Saturday from 8.00am - 6.30pm. Outside these hours, parking will not be restricted.
- Altering the non-restricted parking bays to pay and display parking with 2 hours parking Monday to Saturday from 8.00am to 6.30pm.

Further information is set out overleaf and in the attached plan. Before the proposals can be introduced we are consulting on this Notification so that during the three weeks from the date of this letter we welcome all views, comments and suggestions in support of, or objecting to, the proposals. Please give reasons for your views, as this adds useful context and essential background detail.

To have your say, please email us at frontline.consultation@haringey.gov.uk or telephone the project engineer Steve Pye on 020 8489 1324. Alternatively you can write to Steve at the address above. The closing date for submitting your views is 4 March 2011.

All submissions will be considered carefully by the Council before a final decision is taken on whether to proceed with this scheme, so we look forward to hearing from you.

Yours sincerely,

Joan Hancox
Head of Sustainable Transport



2005-2006
Getting Closer to Communities



INVESTOR IN PEOPLE



Information.

What is Stop and Shop Parking?

Stop and Shop schemes are useful in areas where long-term parking, for example, all day parking, has a negative effect on local businesses.

Controlled, short-term parking bays help to increase available parking spaces at times convenient for shoppers and those visiting local businesses

How does 'Stop and Shop' work?

Parking bays are marked along the road and signs inform motorists how to use the bay and where the nearest Pay & Display ticket machine is.

Tickets can be purchased for a minimum of 15 minutes up to a maximum of 2 hours. Valid tickets should then be displayed in the front windscreen of the vehicle

There are signs showing operating hours and restrictions of the Stop and Shop scheme. Outside the operating hours, parking is free

What are the advantages of Stop and Shop Schemes?

More available parking space encourages more shoppers to visit the area.

The control of on-street parking improves shopping environments.

Revenue raised from the sale of tickets is reinvested in the public highway.

What are the disadvantages of Stop and Shop Schemes?

You have to pay for tickets.

Cost of Stop & Shop Parking

Charges for parking here are based on our 'medium occupancy' tariff. Charges will rise depending on the length of stay to a maximum of £1.90 per hour. Maximum stay is 2 hours.

Disabled badge holders

Any vehicle displaying a valid disabled badge will be able to park free of charge.

Motorcycles

These can be parked in any of the parking bays free of charge.

Loading and unloading

A vehicle may load and unload for a maximum of 40 minutes when delivering or collecting goods unless loading/unloading restrictions are in place. Loading/unloading must be continuous and must involve heavy or bulky goods.

Suspension of parking places

On occasions the police or the council may suspend parking bays. This may happen, for example, during road works

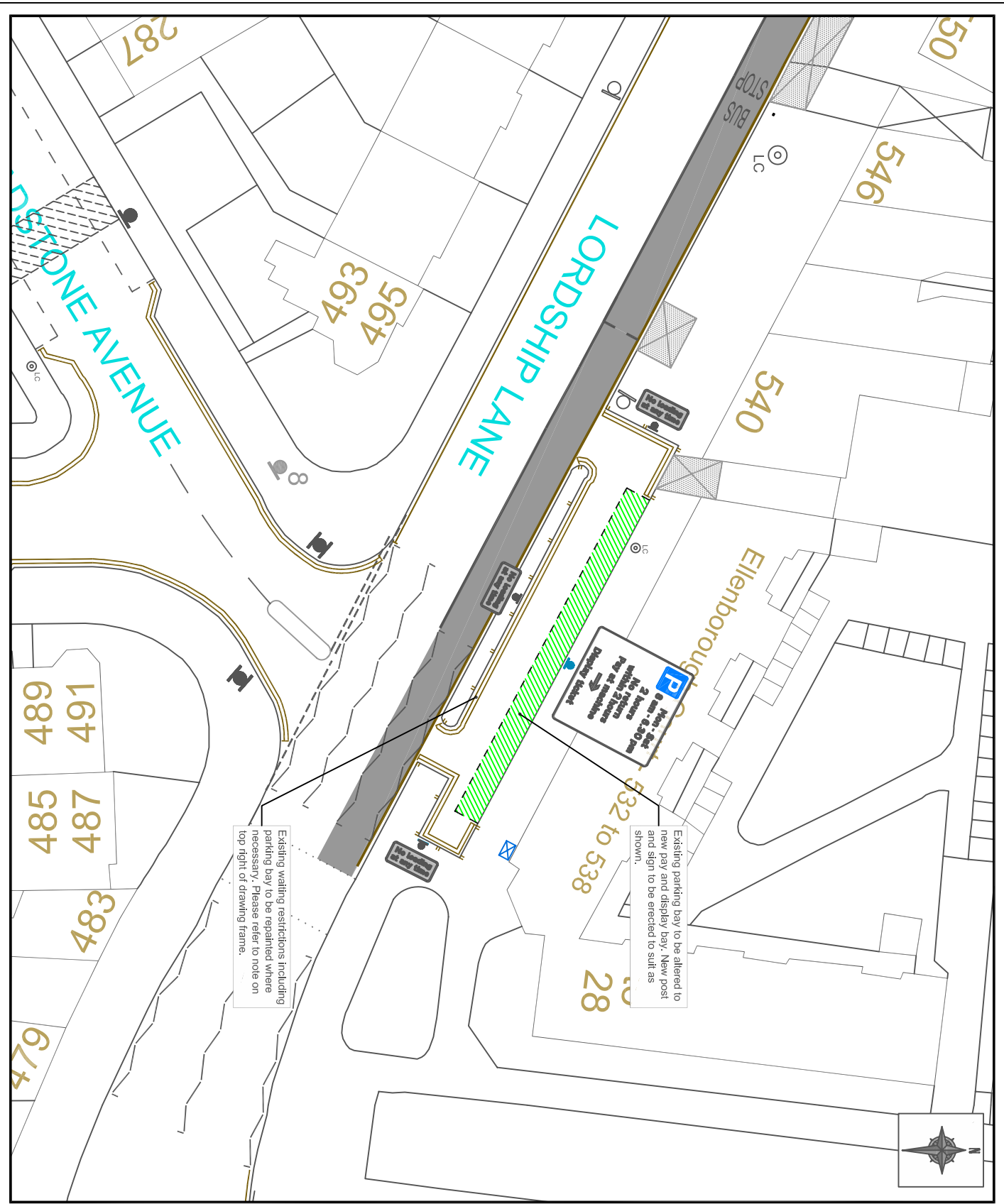
Driveways and recommended pedestrian crossing points

Parking bays will not be placed in front of a driveway where vehicle access has been provided or at a pedestrian crossing point.

Enforcement of regulations

Any driver who parks a vehicle in breach of parking restrictions will be issued with a Penalty Charge Notice (parking ticket).

Haringey Council is responsible for enforcing the parking regulations through its enforcement staff and use of CCTV.



Existing waiting restrictions including parking bay to be repainted where necessary. Please refer to note on top right of drawing frame.

Existing parking bay to be altered to new pay and display bay. New post and sign to be erected to suit as shown.

This product includes mapping data licensed from Ordnance Survey with the permission of HMSO © Crown Copyright LBH 2011. All rights reserved.
License number 100019199.

NOTES:
All existing waiting restrictions including parking bay to be repainted where necessary. If part of restriction does need painting, entire length to be repainted instead of resulting in patch works.

LEGEND:

- Existing double yellow lines.
- Existing single yellow lines.
- Existing lamp columns.
- Existing dropped kerbs.
- Existing post and sign.
- Existing 'no-loading' bays.
- Proposed post and sign.
- Proposed pay and display machine.
- Proposed 'Pay & Display' bays.

REV	Description	Checked	Date

Project: STOP & SHOP SCHEMES
2010 / 2011

Title: PROPOSED STOP & SHOP SCHEME IN ELLENBOROUGH COURT

Path: 10001443/001
1:200 @ A2
JUNE 2010

Scale: 1:200 @ A2
Date Drawing Created: JUNE 2010

Scale: TRS / 10001443 / 001
Project: FRONTLINE SERVICES
TRANSPORT POLICY & PROJECTS

2nd Floor Suite, River Park House, 255 High Street, Wood Green, London N22 8JH
Tel: 020 8469 0000 Fax: 020 8469 0213
Email: enquiries@frontline.co.uk www.frontline.co.uk

