



DEALING WITH **ANTI-SOCIAL BEHAVIOUR**

FAMILY SUPPORT SERVICE



Homes for Haringey



Haringey Council

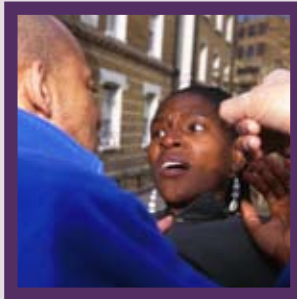
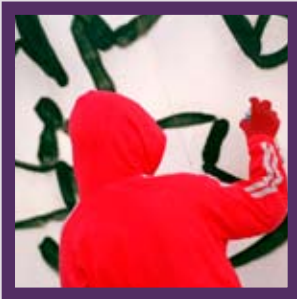
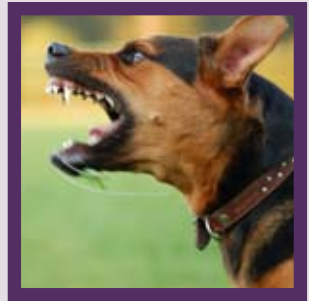
In partnership with:

Department for
Education

HARTS
Haringey Tenancy Support
for Families



- Are you a concerned parent or carer, worried about your child's involvement in anti-social behaviour or crime?
- Is it getting harder to deal with your child's behaviour?
- Is your relationship with your child breaking down?
- Would you like to talk about your concerns?



**Get in touch with the
Family Support Service.**

We understand that raising a child can be difficult; at times parents and carers need some extra support. We recognise the problems parents and carers face when bringing up their children in today's society. That is why Haringey Council's Anti-social Behaviour Action Team (ASBAT) has set up The Family Support Service.

Parenting is the most demanding, challenging and emotional job many of us have to face in our lives. Usually the only knowledge of parenting we have is from our own childhood experiences.

Sometimes this is not always enough to help us cope with the different stages of our children's lives.

The service is **free and confidential**, and aimed at helping families through these difficult times. By intervening early and providing support we aim to divert children away from anti-social behaviour and crime, and back towards positive activities and choices.



Who is it for?

The service offers support for parents and carers of children and young people aged between 7-18 years old.

By supporting parents and carers we aim to equip them with new skills and strategies for dealing with challenging behaviour.

Support is also offered directly to children and young people.

Who provides the service?

The service is provided by the Senior Parenting Practitioner based in the ASBAT with additional support staff. They have been trained and experienced in parenting support, family outreach, youth and play work.



What help do we offer?

- ✔ Identifies and addresses the underlying causes of difficult and challenging behaviour
- ✔ One-to-one advice and tips to implement positive parenting strategies
- ✔ Facilitates group parenting classes where you can discuss, explore and learn new skills and positive strategies to address challenging behaviour
- ✔ Looks at the bigger picture and helps you manage the educational needs of your child
- ✔ Links you to a wide range of services and agencies that can help further, including housing and benefits
- ✔ Links you to projects, organisations and activities for children and young people
- ✔ Arranges referrals to specialist support, such as drugs & alcohol and mental health services



What is a parenting programme?

Once we have met with you, together we will agree a support plan that is tailored to you and your families needs. This could include one to one support in your home environment, parenting programmes equipping you with positive parenting strategies, plus information and advice on household management issues.

There are two different types of programmes available, which include parenting classes:

- **The Strengthening Families Strengthening Communities Programme** - supports parents with children between the ages of 7-18 and runs for 13 weeks.
- **The 'Triple P' Programme (Positive Parenting Programme)** supports families with children aged 7-16 and runs for eight weeks.



What's available at the programme venue?

- Free hot lunch and refreshments
- A clean modern venue with under-five crèche facilities
- Fully accessible
- Interpreters for speakers of other languages
- BSL interpreters for people with hearing impairments
- Support for people with learning difficulties

These programmes offer specialised advice to parents about all of the following issues:

- general concerns about behaviour
- children subject to an acceptable behaviour contract (ABC)
- anti-social behaviour order (ASBO) or supervision order (SO)
- parents subject to a parenting contract (PC) or parenting order (PO)
- maintaining tenancies and avoiding anti-social behaviour related evictions



We aim to help you improve and practice parenting skills and techniques and empower you to set rules and boundaries, and maintain discipline inside and outside of your home. This program needs your commitment and effort, and you'll really notice the benefits. When you have graduated we will present you with a certificate.

What happens after I graduate?

Support is available for up to six months after you graduate, including one-to-one meetings and sessions at your home, which help you to put into practice your new skills. When you are accepted on the programme we will ask you for feedback so we can improve services and monitor how we are helping you. Please keep us informed of how the service is working for you.



What do parents think about the programme?

"I found it helps you to look at yourself differently as well as your kids."

"The programme is excellent and well worth taking part."

"I would recommend it to anyone; in fact I have already recommended the course to other parents."

"The commitment and dedication of the staff was brilliant."

"I enjoyed and learnt an awful lot on this programme."

"The course gave us the chance to talk about all of the issues that we were facing. It gave the opportunity to get advice from other parents who were experiencing similar things as well as the trainers. The trainers spent a lot of time on everyone's issues."

"I recommend this programme to all parents- it's very helpful and they understand!"

"It has been very useful meeting with other parents with similar situations and being able to help and give advice on situations that you have been through yourself."

“ *There is no greater responsibility than raising the next generation.* ”

To find out more, or talk about this leaflet in confidence contact:

The Family Support Service
Anti-social Behaviour Action Team (ASBAT)\
Family Support Service
PO BOX 51452
London N22 8YX

Tel: 020 8489 4660

Email: asbat@haringey.gov.uk

Website: www.haringey.gov.uk

Shqip

Kjo fletushkë ju tregon mbi si do të punojmë me ju nëse bëni ankesë mbi sjellje anti-shoqërore. Për një kopje të kësaj në gjuhën tuaj, shënjoni kutinë, plotësoni formularin dhe dërgojeni tek adresa e mëposhtme me postim falas.

Polski

W niniejszej publikacji wyjaśniamy, jak będziemy współpracować z osobą, która złożyła zażalenie dotyczące zachowania antyspołecznego. Aby otrzymać polską wersję publikacji należy zaznaczyć odpowiednią rubrykę, wypełnić formularz i odesłać go bezpłatnie na podany poniżej adres.

Français

Ce feuillet explique comment nous allons travailler avec vous, si vous faites une réclamation de comportement anti-social. Pour en recevoir un exemplaire dans votre langue, veuillez cocher la case, compléter un formulaire et le renvoyer à l'adresse en port payé ci-dessous.

Soomaali

Warqaddani waxay kaaga warramaysaa sida aannu kuula shaqayn doonno haddii aad ka soo cabato asluubxumada ijtimaaciga ah (antisocial behaviour). Si aad u hesho koobbi luqaddaada ku qoran, calaamadi sanduuqa, buuxi foomka oo ku soo celi cinwaanka boostiisu lacag la'aanta yahay ee hoose.

Kurdî Kurmancî

Ev belavok ji we re dibêje ku, heke hun ji bo şêlên antisosyal giliyekî bikin, em ê çawa bi we re bixebitin. Heke hun kopîyeke bi zimanê xwe dixwazin, qutîkê îşaret bikin, formê tije bikin û ji navnîşana posta bêpere ya jêrîn re bişînin.

Türkçe

Bu broşürde, anti-sosyal davranışlar hakkında bir şikâyetle bulunmanız durumunda sizinle birlikte nasıl bir çalışma yapacağımız hakkında bilgi verilmektedir. Broşürün Türkçe kopyasını edinmek için, lütfen yandaki kutucuğu işaretleyin, formu doldurun ve aşağıdaki ücretsiz posta adresine gönderin.

Please tell us if you would like a copy of this leaflet in another language that is not listed above or in any of the following formats, and send the form to the Freepost address below.

In large print On audio tape In Braille
 In another language, please state:



Name: Tel:

Address:

Email:

Please return to: Freepost RLXS-XZGT-UGRJ, Haringey Council, Translation and Interpretation Services, 8th Floor, River Park House, 225 High Road, London N22 8HQ

Haringey Council offers this translating and interpreting service to Haringey residents. We can translate this document into one language per resident ONLY.

Anti-social behaviour



This is printed on recycled paper. When you have finished with it, please recycle.

Published by Haringey Council's Communications Unit T33.9 • 07/10