

Children and families in Haringey

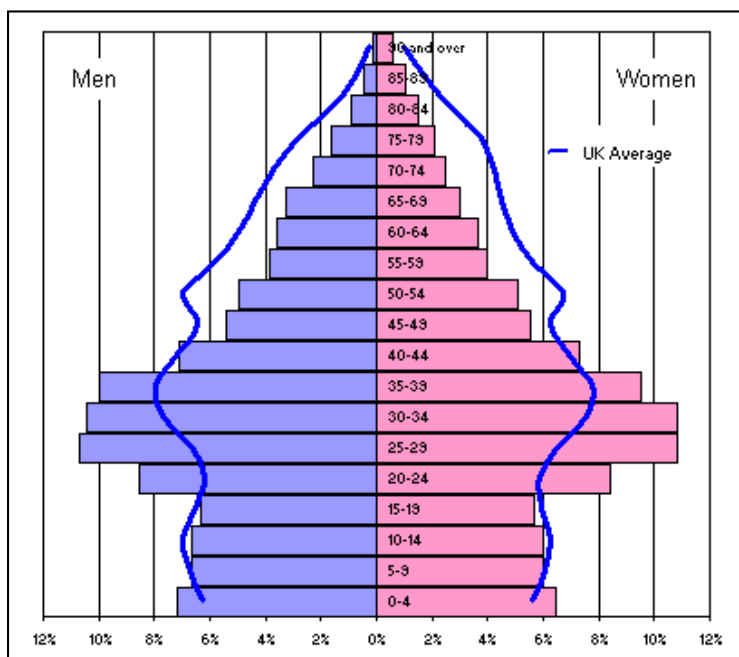
This section provides a summary of the demographic profile of children and young people who live in the London Borough of Haringey. Detailed information is provided for the age ranges 0-4, 5-9, 10-14 and 15-19.

Population structure

The 2001 Census identified that there were 216,507 people living in Haringey, of which 34% were under the age of 25 (73,338). 9.7% of Haringey's population was aged between 19-24 years, compared to only 7.2% in England and Wales.

The graph below shows that males slightly outnumber females in the younger age groups from 0-19, but in all other age groups, females outnumber males. This is particularly evident in the 30-34 age group.

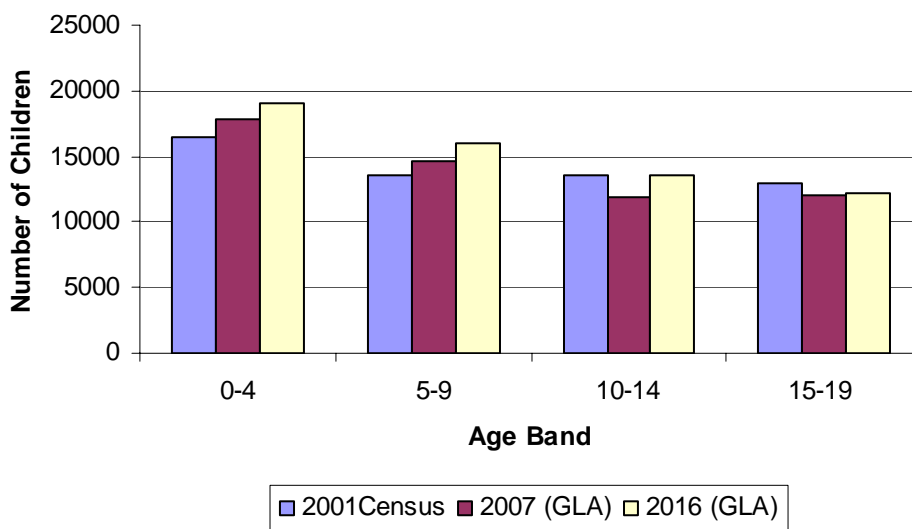
Figure 2: population pyramid showing the age structure of Haringey in comparison to the national average.



Population changes

The Greater London Authority (GLA) is predicting a 12.7% increase in the number of 0-19 year olds in Haringey between the 2001 Census and 2010. The most marked increase is in the under 5 age group where growth is expected to reach almost 32% by 2010. The GLA also predicts an increase in the number of households living in the borough from 92,200 (2001 census) to 105,600 by 2016. This increases in the population is notably amongst the under 5s which may lead to an increase in the number of parents seeking childcare services in the future.

Figure 3: predicted increase in the number of children and young people in Haringey by age group, 2001 to 2016. (This data includes new born babies)



Population of children

In 2001, 20.6% of Haringey's population was aged 16 or under. This is slightly above the London and England averages of 20.19% and 20.15% respectively. A similar picture is apparent for the 0-19 age group where 25.4% of Haringey's population was aged between 0-19. Again, this was above the London and England averages of 24.9% and 25.1%.

The wards with the highest proportion of its population aged 16 or under are Northumberland Park (26.2%), Seven Sisters (25.9%), Tottenham Hale (25.9%) and White Hart Lane (26.5%).

The wards with the lowest proportion of children and young people aged 16 or under are Crouch End (15.0%), Haringay (14.2%) and Highgate (14.0%)

In the 2001 census there were a total of 44,605 children and young people aged 16 or under living in Haringey.

Figure 4: age profile of children and young people in Haringey.

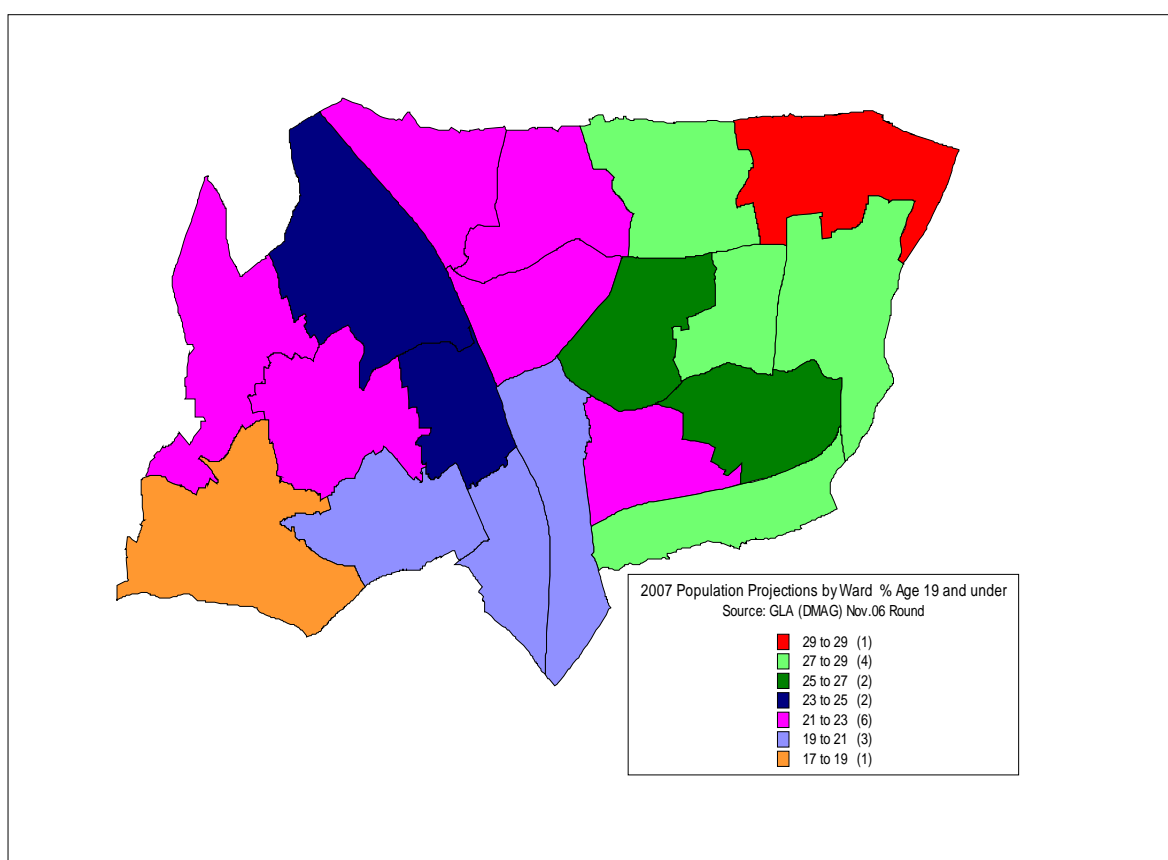
Ward	0-4		5-9		10-14		15-19		All people 0-19	
	2001	2007	2001	2007	2001	2007	2001	2007	2001	2007
Alexandra	722	759	678	596	607	571	567	565	2,574	2,492
Bounds Green	743	849	649	634	607	586	567	542	2,566	2,612
Bruce Grove	951	1,210	797	813	829	673	753	702	3,330	3,398
Crouch End	618	747	502	541	421	446	321	379	1,862	2,113
Fortis Green	623	706	611	534	687	527	564	641	2,485	2,407
Haringay	573	947	386	525	452	336	512	380	1,923	2,189
Highgate	565	595	423	501	395	375	327	350	1,710	1,820
Hornsey	664	897	608	575	608	555	512	538	2,392	2,565
Muswell Hill	611	584	587	508	565	515	483	510	2,246	2,118
Noel Park	690	830	654	616	705	520	824	644	2,873	2,610
Northumberland Park	1,069	1,137	1060	842	994	916	986	893	4,109	3,787
St Ann's	732	1,037	729	628	775	605	859	688	3,095	2,959
Seven Sisters	1,060	1,124	1071	864	1,097	894	911	920	4,139	3,802
Stroud Green	638	750	521	541	483	443	460	433	2,102	2,168
Tottenham Green	864	1,168	805	747	812	661	852	703	3,333	3,278
Tottenham Hale	1,046	1,052	1045	848	985	882	970	831	4,046	3,614
West Green	893	967	858	728	850	733	742	746	3,343	3,174
White Hart Lane	898	942	1018	726	1,049	875	998	915	3,963	3,458
Woodside	773	872	677	633	714	572	765	616	2,929	2,694
Haringey	14,733	17,175	13,679	12,399	13,635	11,686	12,973	11,999	55,020	53,258

Source: 2001 Census 'Key Statistics' and GLA 2007 population projections.

Distribution of children and young people

The eastern part of Haringey tends to have more children and young people between the ages of 0-19 compared to the west of the borough. In 2001, under 5s represented between 5.6% (Highgate ward) to 8.5% (Northumberland Park ward) of the population. Children aged between 5 -9 years old represented between 3.7% (Harringay ward) to 8.1% (Seven Sisters ward) of the population. Young people aged between 10-14 represented between 3.8% (Highgate ward) and 8.8% (White Hart Lane ward) of the population. Young people aged over 15 years old represented between 3.0% (Crouch End ward) and 8.3% (White Hart Lane ward) of the population.

Figure 5: 2007 population projections by ward for children and young people under the age of 19.



Children with a either a special educational need or disability

Figure 6 shows the number of children in Haringey registered with either a special educational need (SEN) or disability. In 2007, there were 526 primary school and 704 secondary school pupils registered with either an SEN or disability, a total of 1230 children and young people.

Figure 6: number of children and young people in Haringey registered with an SEN or disability.

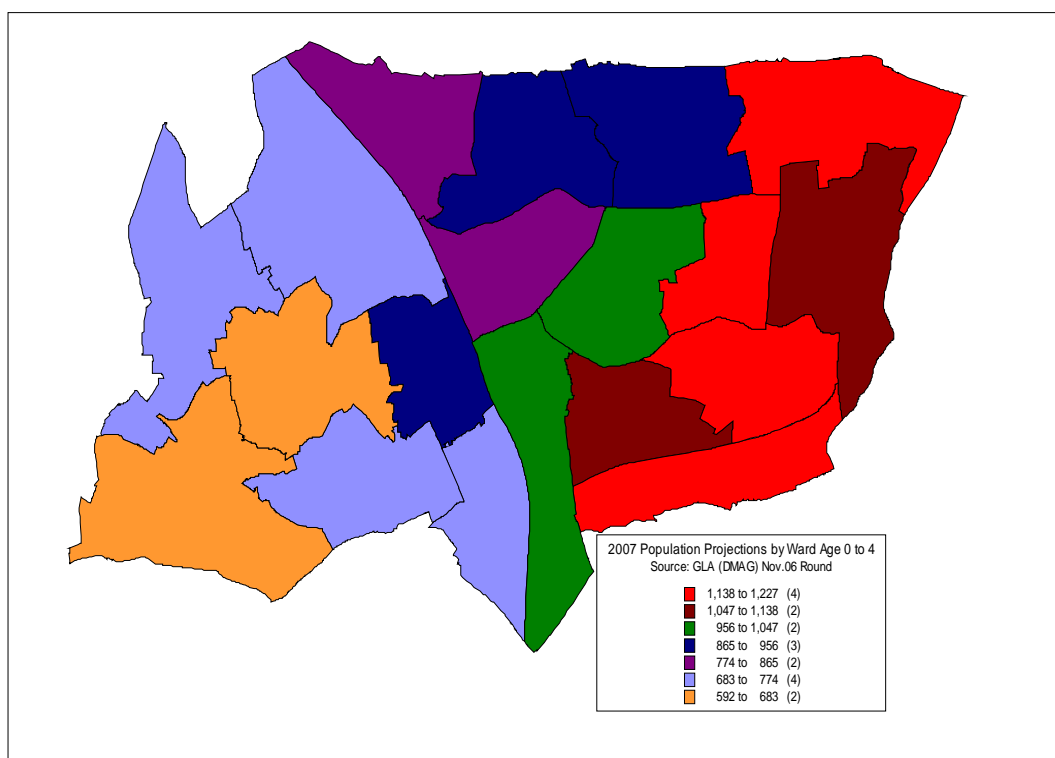
Statemented Children by Primary Need	Primary school	Secondary school
Autistic Spectrum Disorder	113	66
Behavioural, Emotional & Social Difficulties	52	134
Hearing Impaired	10	29
Moderate Learning Difficulties	136	232
Multi Sensory Impairment	0	1
Physical Disability	41	30
Profound Multiple & Learning Disabilities	21	8
Speech, Language & Communication Difficulties	108	94
Severe Learning Difficulties	30	60
Specific Learning Difficulties	7	40
Visual Impairment	8	10
Total	526	704

Profile of children between 0-4 years old

In 2001, the number of 0-4 year olds in Haringey were higher than that of any other 0-19 age group. The 2007 Greater London Authority (GLA) population projections figures continue to support this trend which is evidenced in figure 4.

In 2001 there were 14,733 children under 5 in Haringey. The 2007 projections indicate that there are 17,175 children under the age of 5 in Haringey. The wards with the highest number of children aged 0-4 were Northumberland Park, Seven Sisters and Tottenham Hale. The wards with lowest number of children aged 0-4 were Highgate, Harringay, Muswell Hill and Crouch End.

Figure 7: 2007 population projections by ward aged 0 to 4.

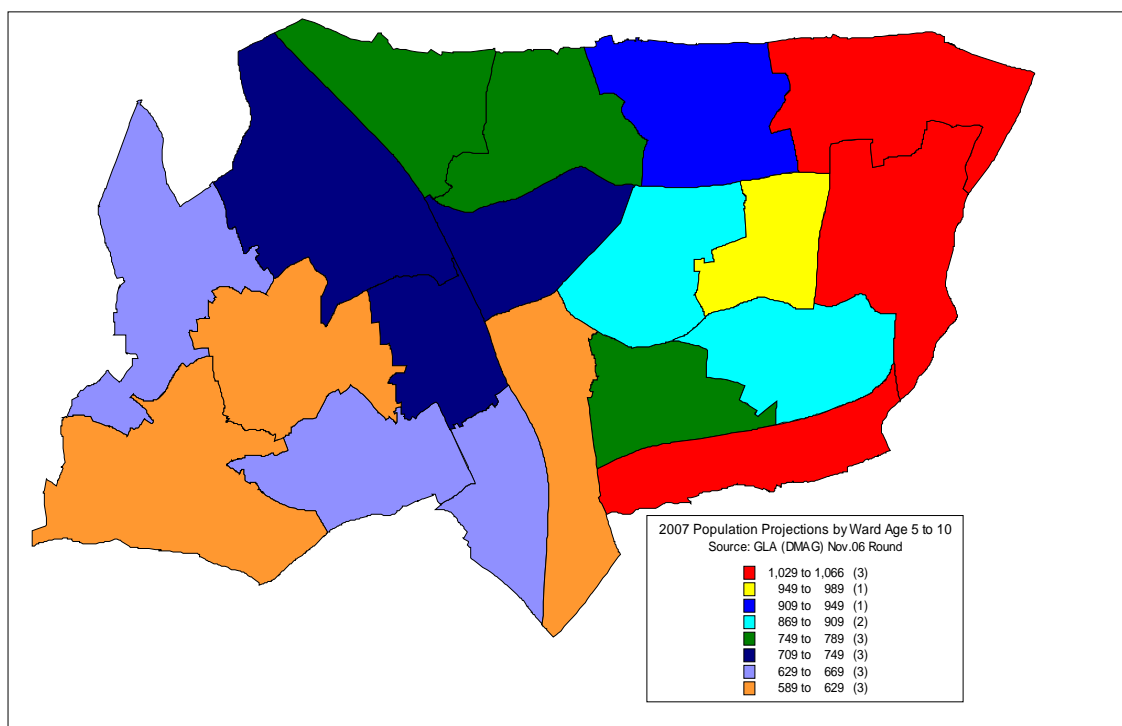


Profile of children aged 5-9 years old

In 2001 there were 13,679 children between 5-9 years old. The 2007 projections indicate that there are 12,399 children aged between 5-9 years old in Haringey. The wards with highest number of children aged 5-9 were Northumberland Park, White Hart Lane, Seven Sisters and Tottenham Hale.

The wards with lowest number of children aged 5-9 were Highgate, Haringey and Crouch End.

Figure 8: 2007 population projections by ward aged 5 to 9.

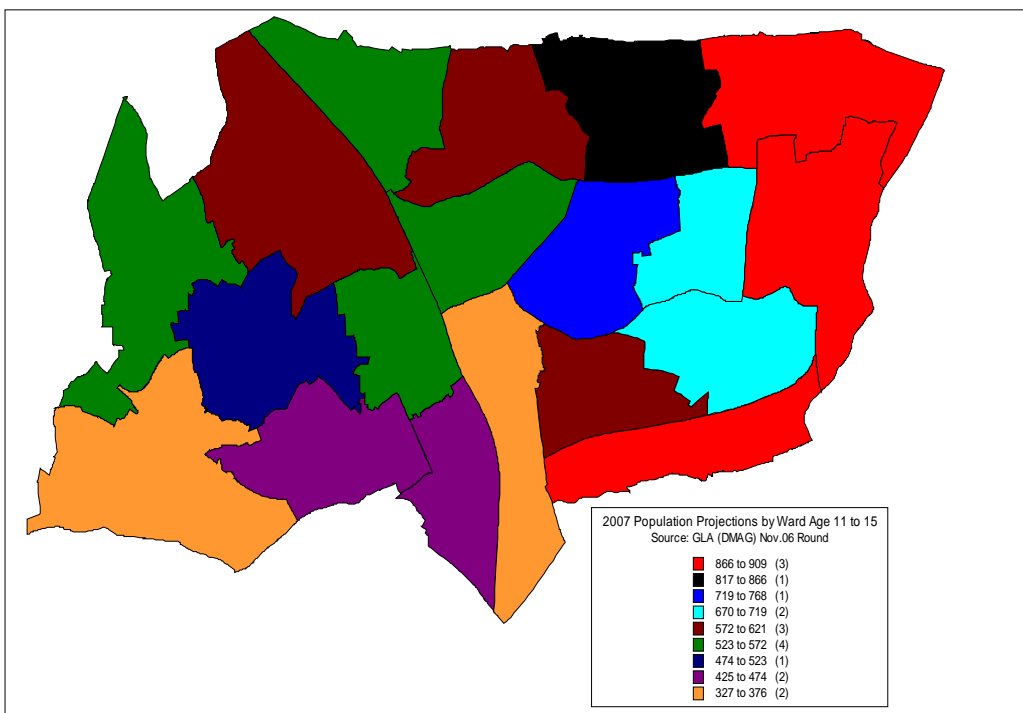


Profile of children aged 10-14 years old

In 2001 there were 13,635 children between 10-14 years old. The 2007 projections indicate that there are 11,686 children under the age of 5 in Haringey. The wards with the highest number of children aged 10-14 were Seven Sisters, White Hart Lane, Northumberland Park and Tottenham Hale.

The wards with lowest number of children aged 10-14 were Highgate, Crouch End, Harringay and Muswell Hill.

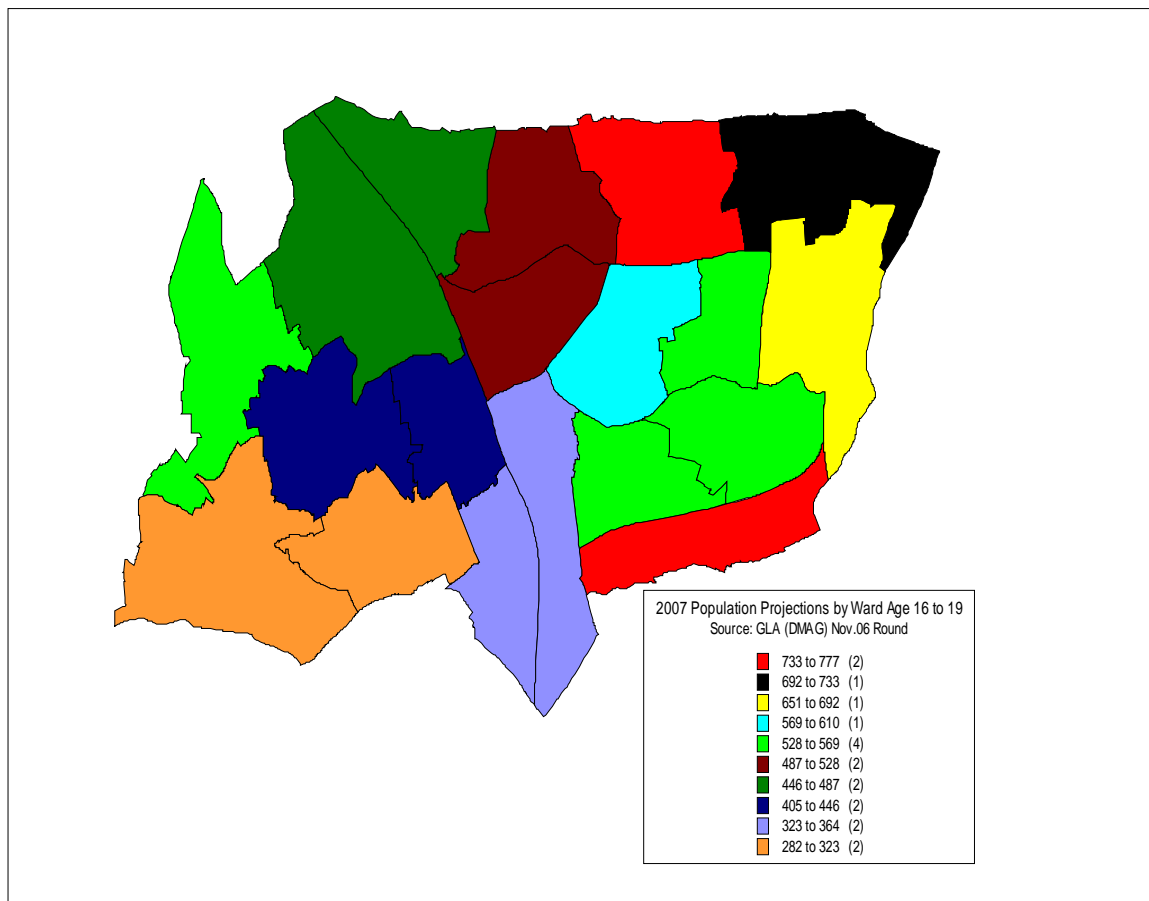
Figure 9: 2007 Population projections by ward aged 11 to 15.



Profile of children aged 15-19 years old

In 2001 there were 12,973 children between 15-19 years old. The 2007 projections indicate that there are 11,999 children under the age of 5 in Haringey. The wards with the highest number of 15-19 year olds were White Hart Lane, Northumberland Park, Tottenham Hale, and Seven Sisters. The wards with the lowest number of children aged were Highgate, Crouch End and Muswell Hill.

Figure 10: 2007 population projections by ward aged 15 to 19.



Ethnicity of children & young people

The 2001 census showed that Haringey had four main ethnic groups within the children and young people population: White British, Black African, Black Caribbean and White Other.

The wards in the east of Haringey tend to have more children and young people from ethnic minority backgrounds compared to the west. The table below shows the ethnicity of children and young people who attend Haringey schools.

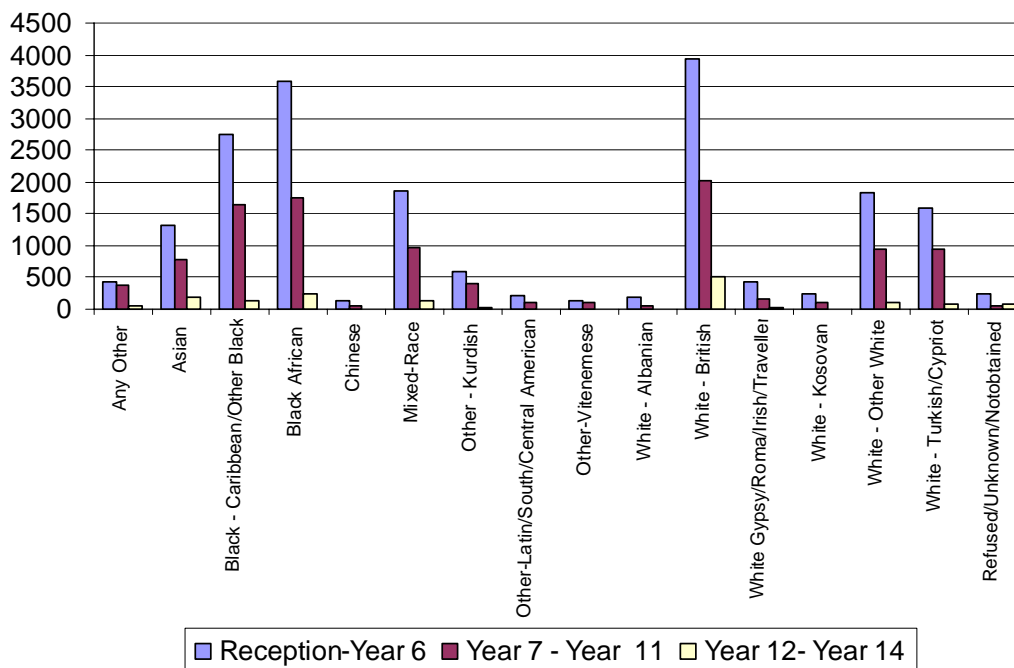
Please note that figure 11 shows all pupils in Haringey schools and not only those who are resident in the borough. The data confirms that the White British (20.5%), Black African (17.7%), Black Caribbean (12.6%) remain the largest ethnic groups. Figure 12 on the next page shows the ethnicity of children and young people by primary, secondary and sixth form year groups.

Figure 11: number of pupils by ethnic group.

Ethnic Group	Year Groups			Total	Total percentages
	Reception- Year 6	Year 7 - Year 11	Year 12- Year 14		
Any Other	440	371	49	860	2.7%
Asian	1324	781	183	2288	7.3%
Black Caribbean	2463	1399	119	3981	12.6%
Black-Other	279	246	24	549	1.7%
Black African	3588	1755	230	5573	17.7%
Chinese	122	45	3	170	0.5%
Mixed ethnic origin	1864	963	127	2954	9.4%
Other - Kurdish	602	397	25	1024	3.2%
Other-Latin/South/Central American	219	100		319	1.0%
Other-Vitenemese	133	104		237	0.8%
White Albanian	187	60	9	256	0.8%
White British	3940	2021	503	6464	20.5%
White Gypsy/ Roma/Irish/Traveller	434	169	20	623	2.0%
White Kosovan	239	117	7	363	1.2%
White Other	1831	956	97	2884	9.1%
White Turkish/Cypriot	1590	953	80	2623	8.3%
Refused/Unknown/Not obtained	250	63	71	384	1.2%
Total	19505	10500	1547	31552	

Source: PLASC 2007.

Figure 12: ethnicity of children & young people .



Source: January 2007 PLASC count.

Ethnicity of 0-4 year olds by ward

In 2001, 38.7% of the 0-4 year old population in Haringey were White British, a further 17% were Black African, 12% White Other and 8.8% Black Caribbean. At ward level the percentage of the 0-4 population from different ethnic groups varied. For example, the percentage of 0-4 year olds from White British background ranged from 70% in Muswell Hill to 21% in Northumberland Park. The Black African population figures ranged from 24% in Tottenham Hale to 3% in Fortis Green. The Black Caribbean population ranged from 16% in Bruce Grove to 1% in Muswell Hill.

Figure 13: Ethnicity of 0-4 year olds.

	Alexandra	Bounds Green	Bruce Grove	Crouch End	Fortis Green	Harringay	Highgate	Hornsey	Muswell Hill	Noel Park	Northumberland Park	Seven Sisters	St Ann's	Stroud Green	Tottenham Green	Tottenham Hale	West Green	White Hart Lane	Woodside
White - British	66%	35%	22%	69%	61%	44%	64%	50%	70%	31%	21%	39%	29%	56%	25%	24%	24%	30%	30%
White - Irish	2%	3%	2%	1%	2%	1%	1%	3%	1%	2%	1%	2%	2%	2%	2%	1%	2%	2%	1%
White - Other	10%	13%	12%	10%	9%	15%	13%	9%	8%	13%	13%	14%	14%	8%	12%	11%	16%	11%	14%
Mixed - White and Black Caribbean	2%	4%	5%	2%	3%	4%	2%	5%	3%	4%	7%	5%	4%	6%	6%	5%	3%	5%	5%
Mixed - White and Black African	1%	2%	2%	1%	1%	2%	1%	1%	1%	2%	2%	2%	2%	2%	1%	3%	2%	1%	2%
Mixed - White and Asian	4%	3%	2%	4%	4%	3%	4%	3%	4%	2%	2%	1%	3%	2%	2%	1%	2%	1%	2%
Mixed - Other	4%	3%	3%	2%	2%	3%	2%	2%	3%	3%	3%	3%	2%	3%	2%	2%	4%	4%	5%
Asian or Asian British - Indian	0%	3%	2%	1%	2%	1%	1%	2%	1%	1%	2%	2%	3%	0%	2%	1%	3%	1%	2%
Asian or Asian British - Pakistani	1%	2%	3%	1%	1%	3%	0%	1%	1%	3%	4%	1%	3%	0%	0%	4%	1%	1%	0%
Asian or Asian British - Bangladeshi	0%	3%	3%	0%	0%	4%	0%	2%	0%	6%	2%	3%	5%	2%	3%	1%	3%	2%	3%
Asian or Asian British - Other	1%	2%	2%	0%	1%	1%	0%	1%	1%	1%	2%	1%	1%	1%	2%	2%	2%	2%	3%
Black or Black British - Black Caribbean	3%	7%	16%	3%	3%	5%	3%	9%	1%	10%	14%	8%	10%	7%	13%	13%	10%	12%	8%
Black or Black British - Black African	4%	15%	19%	4%	3%	10%	5%	9%	3%	17%	22%	14%	16%	9%	22%	24%	20%	21%	19%
Black or Black British - Other	0%	4%	5%	0%	0%	2%	3%	2%	1%	2%	5%	3%	3%	2%	3%	5%	4%	4%	2%
Chinese or other ethnic group - Chinese	0%	1%	1%	1%	1%	1%	1%	1%	0%	1%	1%	1%	1%	0%	1%	0%	1%	0%	1%
Chinese or other ethnic group - Other ethnic group	1%	1%	2%	0%	5%	1%	1%	1%	0%	1%	2%	2%	3%	1%	3%	3%	2%	3%	1%

Source: 2001 census.

Ethnicity of 5-9 year olds by ward

In 2001, 35.5% of the 5-9 year old population in Haringey were White British, a further 16.3% were Black African, 12.7% White Other and 10.7% Black Caribbean. At ward level, there was variation in the balance between the ethnic groups. For instance, the percentage of 5-9 year olds from White British background ranged from 70% in Muswell Hill to 19% in Tottenham Green. For the Black African population figures ranged from 27% in Tottenham Green to 4% in Muswell Hill. The Black Caribbean population ranged from 17% in Tottenham Hale to 2% in Muswell Hill. The White Other population made up 18% of the 5-9 population in Woodside to 8% in Crouch End.

Figure 14: ethnicity of 5-9 year olds.

	Alexandra	Bounds Green	Bruce Grove	Crouch End	Fortis Green	Harringay	Highgate	Hornsey	Muswell Hill	Noel Park	Northumberland Park	Seven Sisters	St Ann's	Stroud Green	Tottenham Green	Tottenham Hale	West Green	White Hart Lane	Woodside
White - British	64%	32%	23%	65%	64%	34%	59%	46%	70%	31%	21%	34%	25%	48%	19%	22%	21%	29%	23%
White - Irish	2%	3%	3%	1%	1%	1%	1%	1%	1%	1%	2%	1%	3%	3%	2%	1%	3%	1%	2%
White - Other	10%	14%	12%	8%	11%	16%	11%	9%	10%	15%	14%	14%	13%	9%	12%	13%	15%	13%	18%
Mixed - White and Black Caribbean	3%	5%	4%	3%	3%	4%	4%	5%	3%	5%	5%	3%	4%	6%	3%	5%	4%	5%	6%
Mixed - White and Black African	0%	2%	3%	0%	1%	1%	1%	3%	2%	2%	1%	1%	2%	1%	2%	2%	3%	1%	3%
Mixed - White and Asian	3%	2%	1%	2%	3%	0%	5%	2%	2%	2%	1%	1%	1%	3%	1%	2%	1%	1%	1%
Mixed - Other	3%	2%	3%	3%	2%	3%	1%	2%	2%	2%	2%	3%	2%	3%	2%	2%	3%	3%	2%
Asian or Asian British - Indian	1%	3%	2%	2%	0%	2%	3%	2%	2%	2%	3%	3%	5%	1%	2%	1%	4%	2%	3%
Asian or Asian British - Pakistani	0%	0%	1%	1%	1%	2%	1%	1%	1%	1%	1%	2%	3%	1%	1%	2%	0%	0%	1%
Asian or Asian British - Bangladeshi	0%	2%	3%	1%	0%	6%	1%	2%	0%	5%	1%	3%	4%	1%	3%	1%	4%	3%	2%
Asian or Asian British - Other	0%	3%	2%	1%	0%	2%	1%	1%	0%	2%	2%	0%	2%	1%	2%	2%	2%	2%	2%
Black or Black British - Black Caribbean	5%	10%	17%	4%	4%	8%	4%	10%	2%	10%	16%	12%	11%	8%	14%	17%	9%	16%	8%
Black or Black British - Black African	6%	15%	19%	6%	5%	17%	7%	10%	4%	15%	23%	16%	19%	11%	27%	20%	26%	19%	24%
Black or Black British - Other	0%	4%	6%	1%	1%	2%	2%	2%	1%	4%	5%	3%	4%	3%	4%	5%	3%	3%	2%
Chinese or other ethnic group - Chinese	0%	0%	1%	1%	0%	0%	1%	0%	0%	2%	0%	1%	1%	0%	2%	1%	1%	0%	1%
Chinese or other ethnic group - Other ethnic group	1%	3%	2%	1%	4%	3%	0%	2%	1%	1%	3%	3%	2%	1%	4%	5%	2%	3%	2%

Source: 2001 census.

Ethnicity of 10 -14 year olds

In 2001, 35.9% of the 10-14 year old population in Haringey were White British, a further 15% were Black African, 13% White Other and 11% Black Caribbean. At ward level, the proportion of 10-14 year olds from White British background ranged from 73% in Muswell Hill to 19% in Tottenham Green. The Black African population figures from 25% in West Green to 3% in Muswell Hill. The Black Caribbean population ranged from 18% in Northumberland Park and Tottenham Green to 3% in Crouch End, Fortis Green and Muswell Hill.

Figure 15: Ethnicity of 10-14 year olds.

	Alexandra	Bounds Green	Bruce Grove	Crouch End	Fortis Green	Harringay	Highgate	Hornsey	Muswell Hill	Noel Park	Northumberland Park	Seven Sisters	St Ann's	Stroud Green	Tottenham Green	Tottenham Hale	West Green	White Hart Lane	Woodside
White - British	67%	33%	24%	64%	69%	26%	62%	45%	73%	28%	23%	34%	22%	48%	19%	22%	23%	32%	29%
White - Irish	1%	2%	2%	1%	2%	3%	2%	3%	1%	2%	3%	2%	3%	2%	1%	1%	2%	2%	2%
White - Other	10%	12%	12%	11%	10%	14%	10%	10%	8%	14%	15%	14%	17%	10%	14%	16%	18%	16%	14%
Mixed - White and Black Caribbean	2%	6%	4%	3%	3%	4%	3%	4%	3%	5%	3%	4%	3%	5%	4%	4%	3%	4%	2%
Mixed - White and Black African	1%	2%	2%	1%	1%	2%	0%	2%	1%	2%	1%	1%	2%	2%	2%	2%	1%	2%	2%
Mixed - White and Asian	3%	3%	2%	3%	2%	2%	4%	1%	2%	2%	1%	1%	1%	2%	1%	2%	2%	1%	3%
Mixed - Other	2%	2%	3%	3%	2%	2%	1%	3%	1%	1%	1%	2%	1%	2%	2%	1%	2%	4%	2%
Asian or Asian British - Indian	3%	6%	3%	1%	2%	6%	3%	4%	1%	4%	2%	3%	6%	3%	2%	1%	3%	2%	4%
Asian or Asian British - Pakistani	0%	1%	3%	0%	0%	3%	1%	1%	1%	3%	1%	1%	1%	1%	2%	1%	1%	1%	2%
Asian or Asian British - Bangladeshi	0%	3%	4%	1%	0%	6%	0%	2%	0%	4%	1%	3%	4%	1%	3%	1%	2%	2%	4%
Asian or Asian British - Other	0%	1%	2%	0%	0%	3%	0%	0%	1%	2%	2%	1%	3%	1%	1%	3%	1%	1%	2%
Black or Black British - Black Caribbean	5%	10%	14%	3%	3%	7%	5%	9%	3%	14%	18%	11%	13%	10%	18%	17%	11%	13%	10%
Black or Black British - Black African	4%	14%	19%	6%	4%	17%	6%	11%	3%	13%	23%	15%	18%	11%	23%	21%	25%	14%	20%
Black or Black British - Other	1%	2%	4%	2%	0%	2%	2%	2%	2%	4%	3%	4%	2%	2%	3%	3%	2%	4%	2%
Chinese or other ethnic group - Chinese	0%	1%	1%	0%	0%	1%	1%	0%	1%	2%	0%	1%	2%	0%	1%	1%	3%	1%	2%
Chinese or other ethnic group - Other ethnic group	1%	2%	2%	1%	3%	4%	2%	1%	1%	1%	4%	2%	2%	1%	3%	4%	2%	2%	2%

Source: 2001 census.

Ethnicity of 15 -19 year olds by ward

In 2001, 33.5% of the 15-19 year old population in Haringey were White British, a further 16.5% were White Other, 13.5% Black African and 11.3% Black Caribbean. At ward level, the proportion of 15-19 year olds from White British background ranged from 72% in Muswell Hill to 18% in Bruce Grove. The Black African population ranged from 21% in Bruce Grove to 2% in Muswell Hill. The Black Caribbean 15-19 year old population ranged from 20% in Tottenham Green to 0% in Muswell Hill. The White Other population represented 25% in West Green to 9% in Muswell Hill.

Figure 16: Ethnicity of 15-19 year olds.

	Alexandra	Bounds Green	Bruce Grove	Crouch End	Fortis Green	Harringay	Highgate	Hornsey	Muswell Hill	Noel Park	Northumberland Park	Seven Sisters	St Ann's	Stroud Green	Tottenham Green	Tottenham Hale	West Green	White Hart Lane	Woodside
White - British	57%	29%	18%	54%	62%	28%	59%	42%	72%	33%	21%	26%	22%	46%	21%	22%	23%	35%	32%
White - Irish	1%	3%	3%	4%	1%	4%	0%	1%	4%	1%	2%	2%	3%	4%	1%	2%	3%	3%	2%
White - Other	14%	15%	18%	15%	14%	17%	12%	13%	9%	17%	17%	16%	22%	10%	14%	17%	25%	18%	18%
Mixed - White and Black Caribbean	2%	4%	2%	2%	1%	2%	1%	3%	2%	3%	3%	3%	2%	5%	3%	3%	1%	4%	2%
Mixed - White and Black African	2%	2%	0%	2%	0%	1%	2%	2%	1%	1%	0%	1%	1%	1%	1%	1%	0%	2%	0%
Mixed - White and Asian	4%	2%	2%	3%	2%	1%	4%	1%	2%	1%	1%	0%	1%	1%	1%	2%	1%	2%	2%
Mixed - Other	2%	3%	3%	3%	3%	2%	5%	2%	1%	2%	2%	2%	2%	2%	3%	2%	1%	2%	1%
Asian or Asian British - Indian	2%	6%	3%	0%	3%	6%	4%	5%	4%	5%	5%	3%	5%	3%	3%	2%	4%	3%	7%
Asian or Asian British - Pakistani	0%	1%	2%	1%	1%	3%	0%	1%	0%	2%	1%	1%	3%	0%	2%	1%	1%	1%	1%
Asian or Asian British - Bangladeshi	1%	5%	2%	3%	0%	4%	0%	3%	0%	4%	1%	4%	4%	0%	2%	1%	3%	1%	3%
Asian or Asian British - Other	1%	2%	2%	1%	1%	4%	1%	2%	1%	3%	3%	2%	3%	1%	2%	2%	1%	1%	3%
Black or Black British - Black Caribbean	5%	9%	16%	3%	4%	5%	4%	13%	0%	12%	18%	14%	11%	12%	20%	16%	10%	10%	7%
Black or Black British - Black African	6%	10%	21%	6%	5%	16%	6%	8%	2%	11%	20%	16%	16%	10%	19%	19%	18%	12%	13%
Black or Black British - Other	2%	3%	3%	3%	1%	1%	0%	1%	0%	3%	3%	4%	2%	3%	3%	3%	3%	3%	3%
Chinese or other ethnic group - Chinese	0%	1%	2%	1%	1%	2%	1%	1%	2%	2%	1%	1%	1%	1%	1%	2%	2%	1%	2%
Chinese or other ethnic group - Other ethnic group	1%	3%	3%	1%	1%	3%	2%	1%	1%	1%	4%	3%	2%	1%	3%	5%	3%	2%	3%

Source: 2001 census.

Ethnicity of Haringey children by ward from the January 2007 PLASC

Ethnicity of 0-4 year olds by ward

The January 2007 Pupil Level Annual School Census (PLASC) results show that there is little variation compared to the 2001 census in the distribution of ethnic groups by ward. For example, the proportion of White British 0-4 year olds ranged from 62% in Crouch End to 4% in Tottenham Green. The Black African population ranged from 23% in White Hart Lane to 1% in Muswell Hill. The Black Caribbean population ranged from 14% in Bruce Grove to 1% in Muswell Hill. The White Other population ranged from 15% in Alexandra to 4% in White Hart Lane.

Ethnicity of 5-9 year olds by ward

The January 2007 PLASC results show that there is little variation in the distribution of ethnic groups by ward when compared to the 2001 census. The percentage of White British 5-9 year olds ranged from 58% in Alexandra to 5% in Tottenham Green. The Black African population ranged from 25% in Northumberland Park to 3% in Alexandra. The Black Caribbean population ranged from 11% in Bruce Grove to 1% in Alexandra. The White Other population represented 15% of the 5-9 year old population in Crouch End and 5% in White Hart Lane.

Ethnicity of 10 -14 year olds by ward

Data from the January 2007 PLASC showed that the proportion of White British 10-14 year olds ranged from 57% in Alexandra to 4% in Seven Sisters ward. The Black African population ranged from 23% in West Green to 3% in Muswell Hill. The Black Caribbean population ranged from 11% in Bruce Grove to 1% in Alexandra. The Other White population ranged from 15% in Muswell Hill to 6% in Northumberland Park.

Ethnicity of 15 -19 year olds by ward

The results from January 2007 PLASC showed that the proportion of White British 15-19 year olds ranged from 67% in Fortis Green to 6% in Tottenham Green. The Black African population ranged from 28% in West Green to 3% in Fortis Green. The Black Caribbean population ranged from 10% in Tottenham Green to 1% in Highgate. The White Other population ranged from 15% in Highgate to 2% in Tottenham Hale.

Family Structure

The family structure (i.e. lone parent or married couple) and the number of dependant children a family has can influence the type, volume and overall demand for childcare.

Family type

The figures 17 and 18 below show the structure of families by ward as reported in the 2001 census. Figure 17 shows that in 2001, the percentage of households in Haringey (12.9%) which consisted of married couples with dependent children was below the London (16.9%) and national (18.5%) averages. The percentage of cohabitating couples with dependent children was lower than the London and national averages. The percentage of lone parent households with dependent children was above London and national averages.

At ward level, Alexandra (19.9%), Seven Sisters (16.2%) and Fortis Green (15.9%) have the highest proportion of married couple households with dependent children. White Hart Lane (17.2%), Northumberland Park (15.5%) and Tottenham Hale (15.5%) have the highest percentage of lone parents with dependent children. Wards in the east of Haringey tend to have more lone parent families with dependant children.

Figure 17: percentage of households by family type.

All households	Married couple with dependent children*	Cohabiting With dependent children *	Lone parents With dependent children *
Alexandra	19.9%	2.7%	6.0%
Bounds Green	11.6%	2.2%	10.1%
Bruce Grove	12.5%	3.0%	12.1%
Crouch End	10.2%	2.7%	4.2%
Fortis Green	15.9%	2.1%	5.4%
Harringay	9.5%	2.4%	6.5%
Highgate	10.4%	1.2%	4.4%
Hornsey	10.4%	3.4%	9.7%
Muswell Hill	17.2%	2.9%	4.4%
Noel Park	10.6%	2.6%	11.5%
Northumberland Park	12.7%	2.8%	15.5%
Seven Sisters	16.2%	2.4%	11.7%
St Ann's	12.9%	2.0%	9.0%
Stroud Green	9.5%	3.2%	8.0%
Tottenham Green	11.3%	2.2%	13.0%
Tottenham Hale	14.5%	2.8%	15.5%
West Green	14.8%	2.6%	11.0%
White Hart Lane	14.8%	2.7%	17.2%
Woodside	12.5%	2.1%	10.2%
Haringey	12.9%	2.5	9.8%
London	16.8%	2.7%	8.9%
England	18.5%	3.4%	7.1%

Number of households with dependent children

Figure 18 shows data on the size of families with dependent children by ward in Haringey as reported by the 2001 census. In 2001, White Hart Lane (34.3%), Northumberland Park (31%) and Tottenham Hale (30.1%) had the highest number of lone parent families with one or more dependent children.

Alexandra (31.6%), Muswell Hill (29.1%) and Fortis Green (27.5%) had the highest number of families with two adults and one or two dependent children. The wards with the highest proportion of families with three or more dependent children were Seven Sisters (10.9%), White Hart Lane (8.6%) and West Green (8.4%).

Figure 18: number and percentage of families with dependent children.

Ward	Number of families			Percentage of families			All families
	1 adult 1 or more dependent children	2 adults and 1 or 2 dependent children	2 adults and 3 or more dependent children	1 adult 1 or more dependent children	2 adults and 1 or 2 dependent children	2 adults and 3 or more dependent children	
Alexandra	306	860	177	11.2	31.6	6.5	2,725
Bounds Green	560	605	135	21.0	22.7	5.1	2,671
Bruce Grove	728	670	190	25.6	23.5	6.7	2,849
Crouch End	269	635	119	10.1	23.8	4.5	2,667
Fortis Green	300	757	176	10.9	27.5	6.4	2,755
Harringay	347	530	88	14.8	22.5	3.7	2,352
Highgate	251	539	105	9.9	21.3	4.1	2,532
Hornsey	515	566	135	20.4	22.5	5.4	2,519
Muswell Hill	228	734	184	9.0	29.1	7.3	2,525
Noel Park	661	564	137	25.0	21.3	5.2	2,645
Northumberland Park	946	660	253	31.0	21.6	8.3	3,052
Seven Sisters	736	740	334	24.0	24.1	10.9	3,073
St Ann's	541	624	195	19.6	22.6	7.1	2,764
Stroud Green	432	551	118	17.4	22.2	4.7	2,487
Tottenham Green	789	628	192	28.1	22.4	6.8	2,808
Tottenham Hale	952	740	248	30.1	23.4	7.8	3,162
West Green	648	700	239	22.8	24.6	8.4	2,842
White Hart Lane	942	693	235	34.3	25.2	8.6	2,745
Woodside	568	603	189	20.7	22.0	6.9	2,745
Haringey Total	10719	12399	3449	20.6	23.9	6.6	51,918

Source: 2001 census.

Index of deprivation

The index of deprivation highlights the wards with high concentrations of deprivation and is a useful indicator for assessing whether residents can afford childcare in their local area.

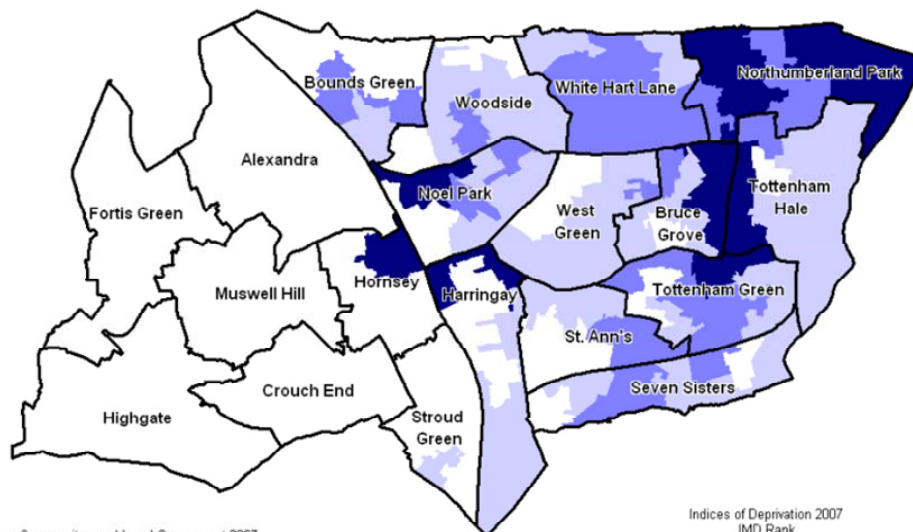
Geographical distribution of deprivation

The results from the Index of Multiple Deprivation 2007 show that Haringey is the 18th most deprived authority nationally and is the 5th most deprived authority in London.

The map below illustrates the Index of Multiple Deprivation by super output areas (SOAs). The darker areas represent the 5% most deprived SOAs in England. 27% of Haringey's SOAs are amongst the 10% most deprived in the country. These SOAs are concentrated in the east of the borough, mainly in White Hart Lane and Northumberland Park wards, with the exception of the SOAs in the Campsbourne area of Hornsey, which is located in the west of the borough.

Figure 19: index of multiple deprivation 2007.

Indices of Deprivation 2007
Rank of IMD
Haringey SOAs



Source: Communities and Local Government 2007
Please note: Maps on this site have been reproduced from Ordnance Survey material with the permission of Ordnance Survey on behalf of the Controller of Her Majesty's Stationery Office © Crown copyright. Unauthorised reproduction infringes Crown copyright and may lead to prosecution or civil proceedings.
London Borough of Haringey 100019199 2008

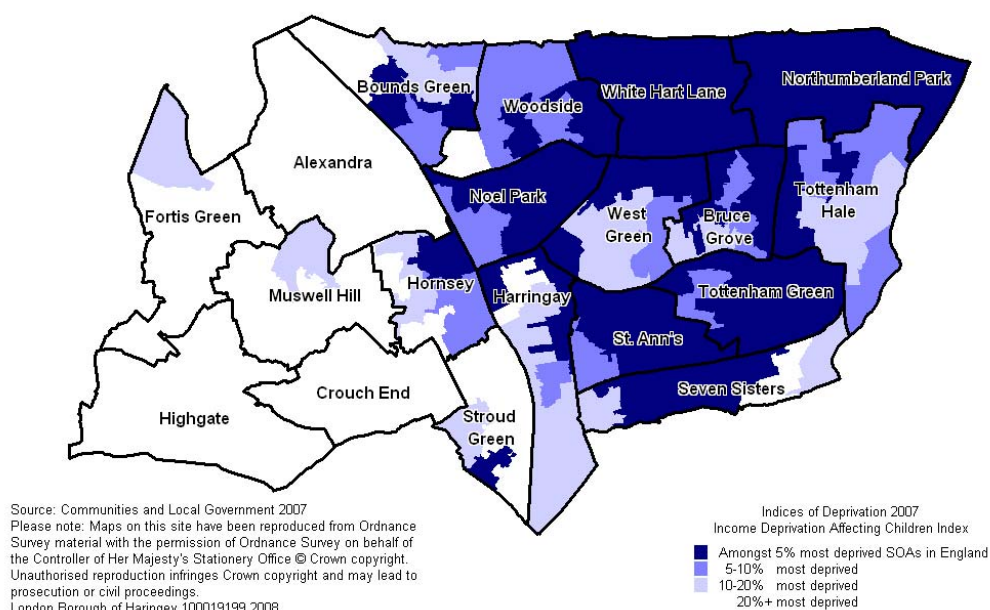
source: communities and local government 2007.

Deprivation affecting children

The income deprivation affecting children is shown in the map below. It shows that Haringey has 81 out of 144 super output areas that are in the 10% most deprived in the country. There are pockets of extreme deprivation in the eastern part of the borough. The geographical spread of deprivation affecting children is much wider than that seen in the index of multiple deprivation map, with all wards in the east of the borough having at least one super output area in the 5% most deprived in the country.

Figure 20: income deprivation affecting children index for Haringey.

Indices of Deprivation 2007
Income Deprivation Affecting Children Index
Haringey SOAs



source: department for communities and local government 2007.